

南祠堂の基壇周辺の埋設土器 Buried pottery around the Southern Sanctuary

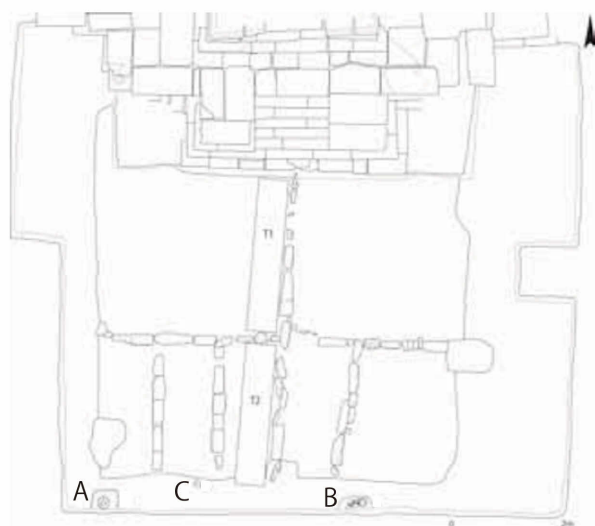
南祠堂の解体修理にともなう発掘によって、その周りに意図的に埋納されたと考えられる土器がいくつか発見されました。これまで発見されたのは3か所、4個体で、いずれも南祠堂の掘込地業の外側から見つかっています。

このうちA地点から見つかったものは黒褐釉が施された壺で、頸より上の部分は失われていました。この土器は、南祠堂が建立された時の地表面から掘り込まれた穴の底に据えられた状態で発見されました。土器の中に何か入っていないか慎重に調べましたが、土が詰まっていただけでした。

B地点からは2つの無釉の壺が見つかり、1つはほぼ完全な形を保っていたものの、もう1つは1/3ほどの部分しか残っていませんでした。

C地点からは無釉の、注ぎ口が付いた壺が見つかり、これは東南アジアで広くみられるケンディと呼ばれる種類の土器です。しかしこれも部分的にしか残っていませんでした。

これらの埋納土器は、出土状況から南祠堂の建立とほぼ同時期に埋められたと推測されます。しかし土器の中からこれまでのところ何も見つからないので、何のために埋められたかは現時点では不明です。



埋納土器の出土位置図
Locations of buried pottery around the Southern Sanctuary

In the excavation accompanying the dismantling and repair of the Southern Sanctuary, a number of pottery vessels were found, that were likely buried intentionally around the sanctuary. So far, four artifacts have been found from three locations on outside the basement of the Southern Sanctuary.

The pottery excavated from location A was a brown-glazed stoneware vase missing the portion above its neck. It was found ensconced in a pit made in the surface of the ground when the Southern Sanctuary was initially built. The inside of the pottery was carefully checked for any objects that might be inside, but it was only packed with soil.

From location B, two unglazed vases were excavated. One was almost wholly intact, but the other was the remaining one-third or so of what it had been.

From location C, an unglazed, spouted vase was excavated. It was of a type called *kendi*, which was seen widely in Southeast Asia. However, only part of the vessel remains.

Judging by the state in which they were excavated, it is thought that these buried pottery vessels were buried at around the same time as the construction of the Southern Sanctuary. However, as nothing has been found from inside the vessels so far, the reason why they were buried is yet unknown.



A地点における埋納土器の出土状況
Excavated buried pottery at the location of A

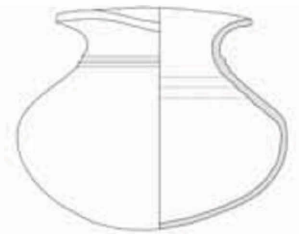


B地点における埋納土器の出土状況
Excavated buried pottery at the location of B

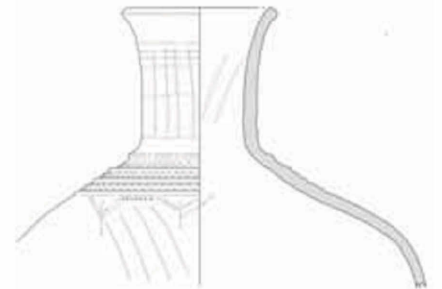


C地点における埋納土器の出土状況
Excavated buried pottery at the location of C

埋納土器 (A地点)
Buried pottery at the location of A



埋納土器 (B地点)
Buried pottery at the location of B



埋納土器 (C地点)
Buried pottery at the location of C

