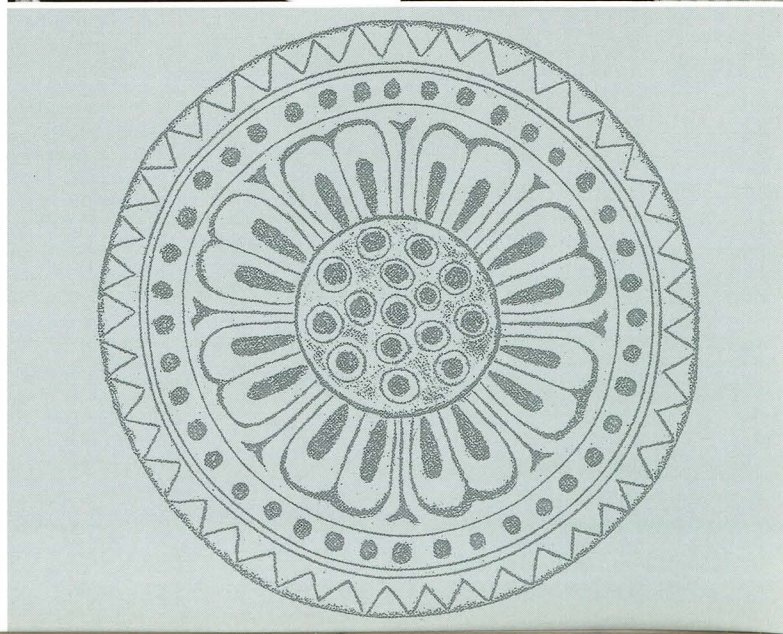


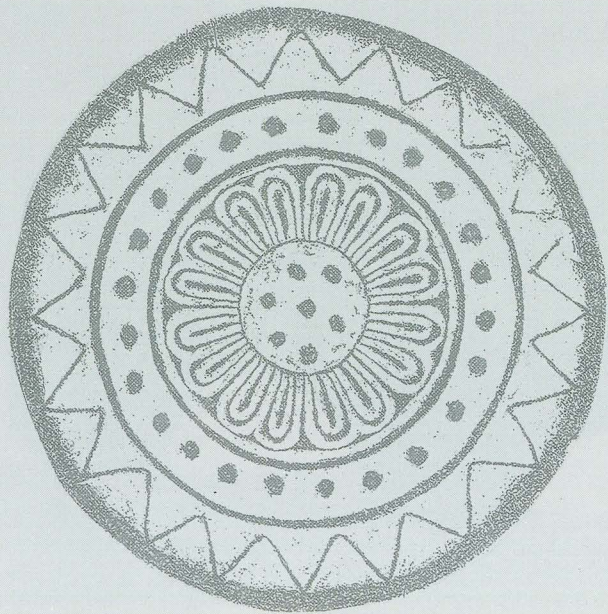
奈良国立文化財研究所概要

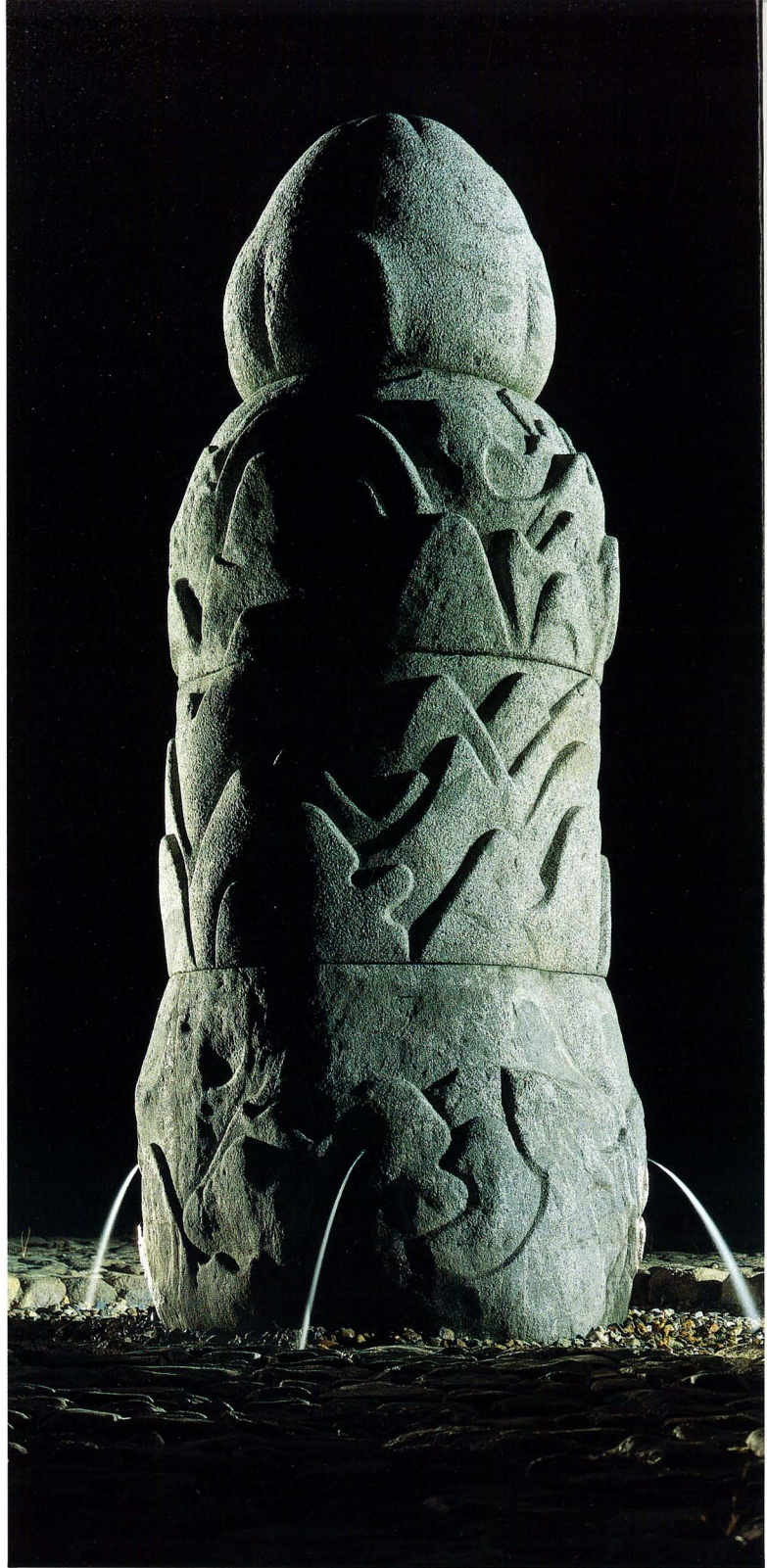
1997

BRIEF INTRODUCTION TO NARA NATIONAL
CULTURAL PROPERTIES RESEARCH INSTITUTE









奈良国立文化財研究所概要

1997

BRIEF INTRODUCTION TO NARA NATIONAL
CULTURAL PROPERTIES RESEARCH INSTITUTE

平成9年5月1日 May 1, 1997

目次

研究所の役割と組織	2・3
平城宮跡発掘調査部	4
飛鳥藤原宮跡発掘調査部	5
歴史研究室	6
建造物研究室	7
埋蔵文化財センター	8
飛鳥資料館	9
研究所の歩み、普及活動	10・11
予算と施設	12
旧米谷家・研究所本館	12・13
平城宮跡資料館	14
平城宮跡遺構展示館	15
飛鳥藤原宮跡発掘調査部	16
飛鳥資料館	17
地図と年表	18・19
平城京と藤原京の地図	22・23

Table of Contents

Role/Organization of Nara Institute	2,3
Division of the Heijo Palace Site Investigations	4
Division of the Asuka and Fujiwara Palace Site Investigations	5
Department of History	6
Department of Architectural History	7
Centre for Archaeological Operations	8
Asuka Historical Museum	9
History of the Institute	10
Current Educational Activities	11
Budget and Facilities	12
Former Kometani Residence	12
Headquarters Building	13
Heijo Palace Site Museum	14
Heijo Palace Archaeological Features Exhibition Hall	15
Division of Asuka/Fujiwara Palace Site Investigations	16
Asuka Historical Museum	17
Map and Chronology	20,21
Maps of the Heijo/Fujiwara Capitals	22,23

表紙 奈良文研本館と平城宮跡を西から見る
(1995年5月6日撮影)

- i 飛鳥寺西門西側の発掘
- ii 経典の調査
- iii 保存科学
- iv 測量研修
- v 平城宮の正門、朱雀門すざくもんの復原
- vi 飛鳥資料館の須弥山石しゅみせんせきの噴水の復原
- vii 平城宮に用いた鬼瓦

Cover: Aerial view of the Headquarters building and the Heijo Palace site (from the west)

- i. Excavation at the out Side of Asuka dera
- ii. Analysis of a sutra
- iii. Conservation science
- iv. Training session in mapping for local archaeologists
- v. Reconstruction of the South Central Gate (Suzaku Gate) of the Heijo Palace
- vi. Reconstruction of the Shumisen Stone (7th c. water spout) at the Asuka Historical Museum
- vii. Ornamental ridged-end roof tiles of Heijo Palace

