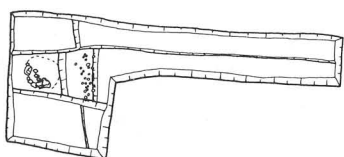
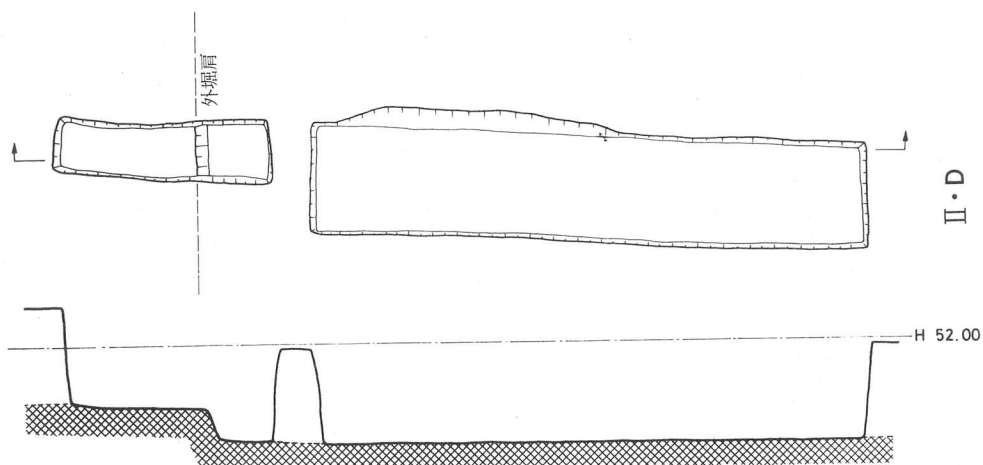


II·B

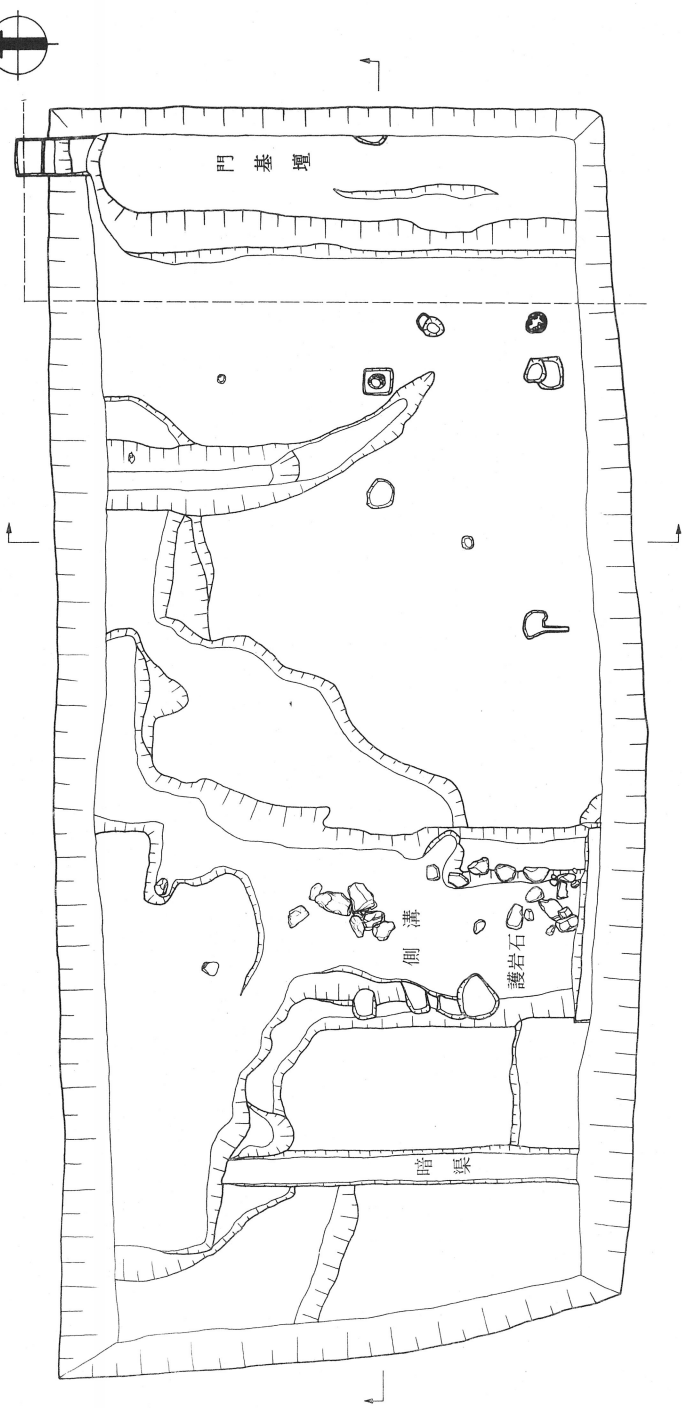


II·C



II·D

II-B·II-C·II-D

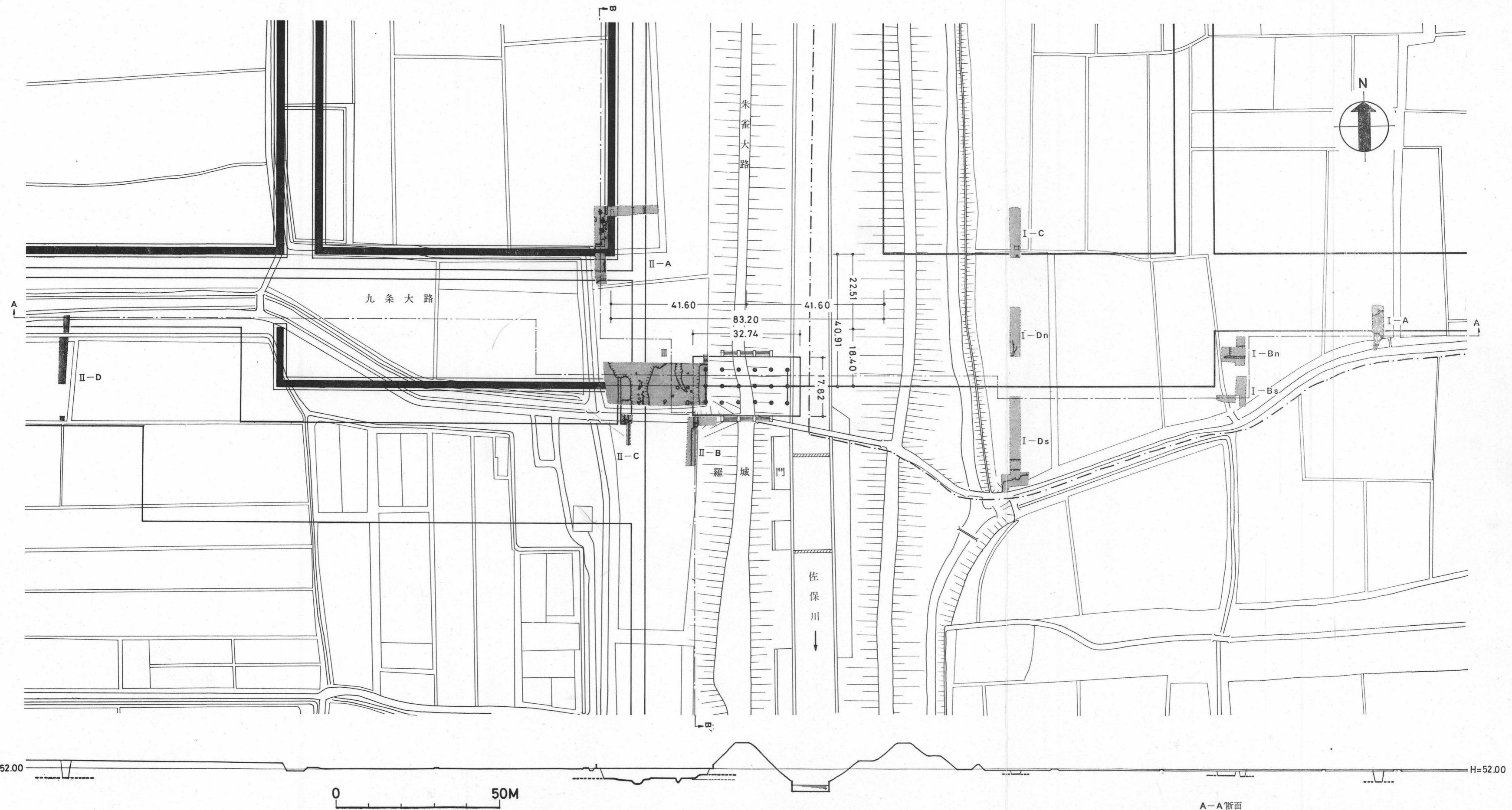
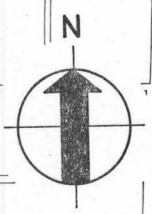


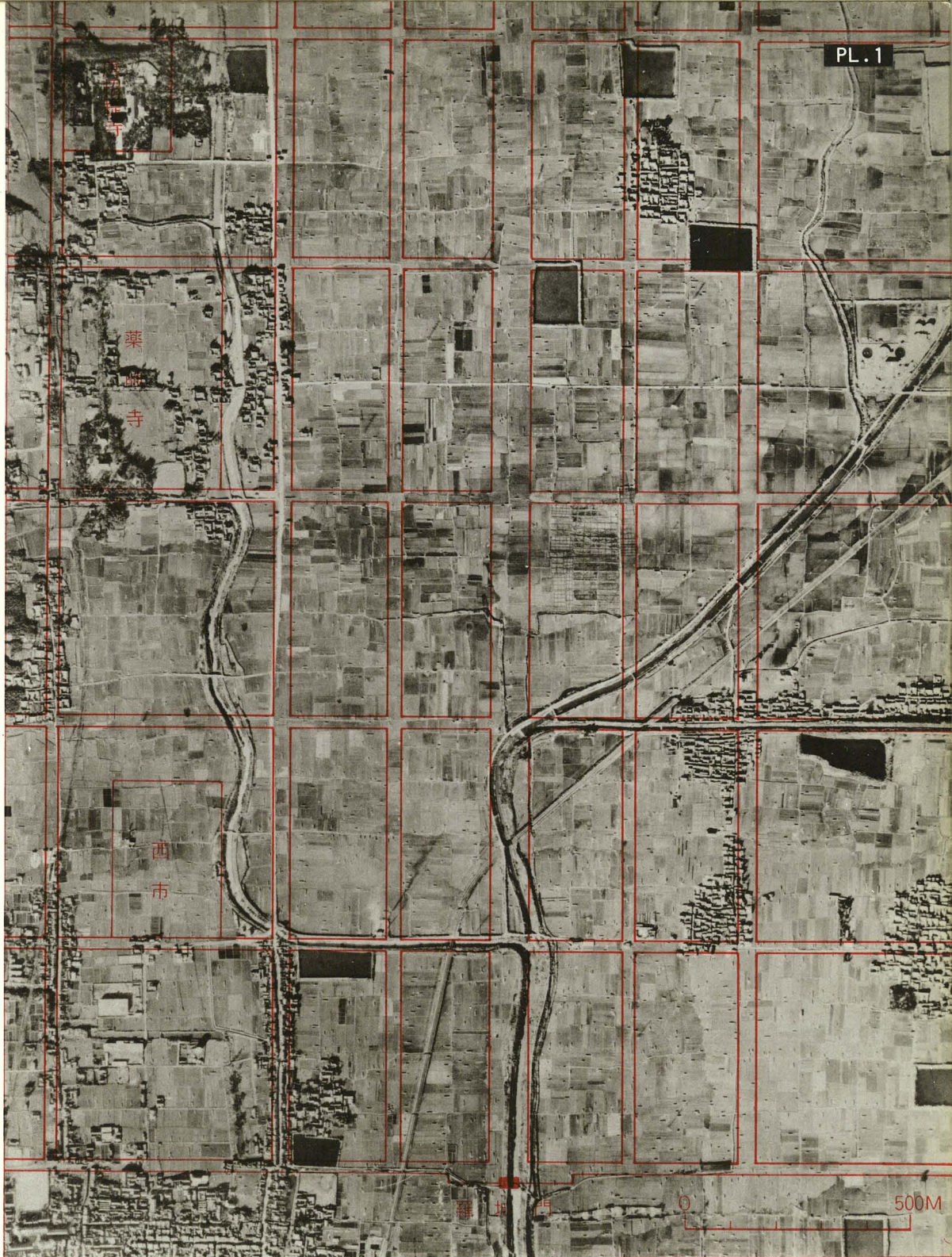
H=52.00

H=52.00

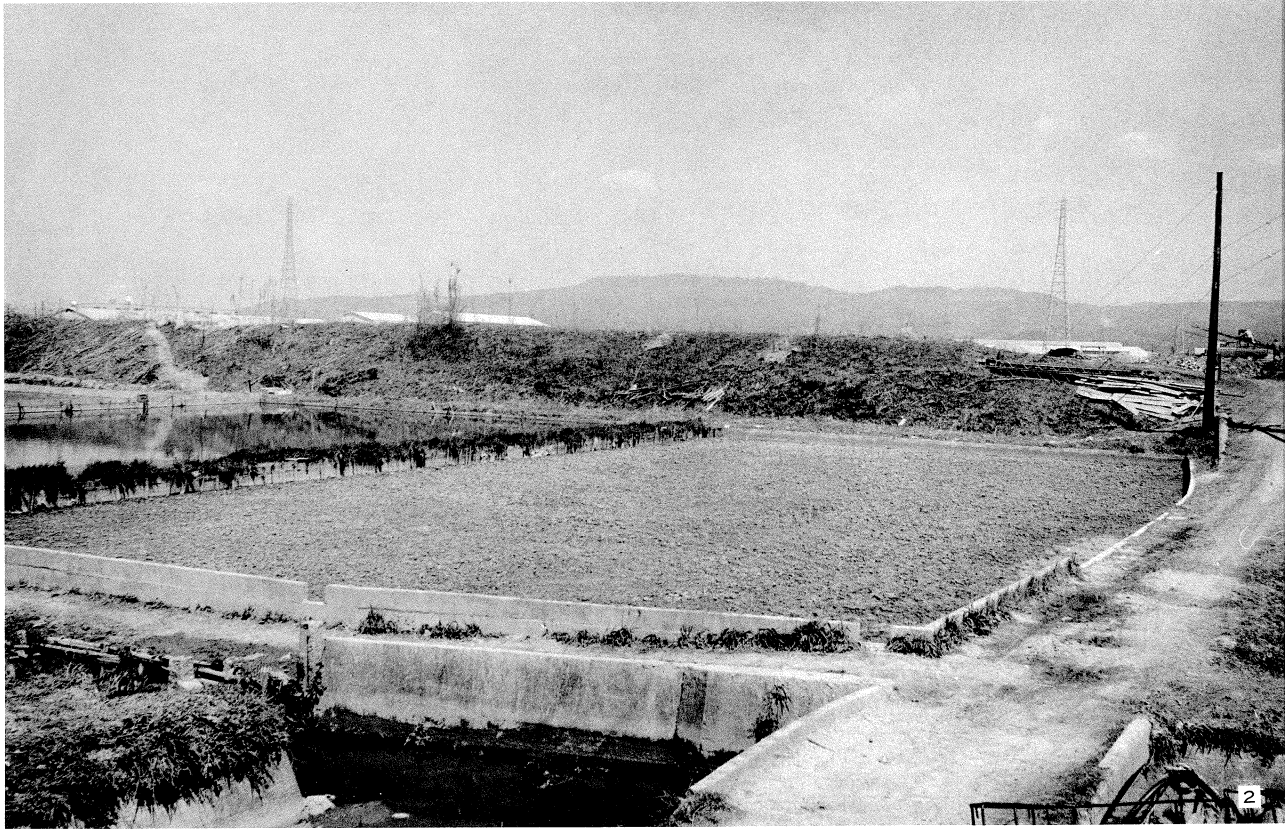


III





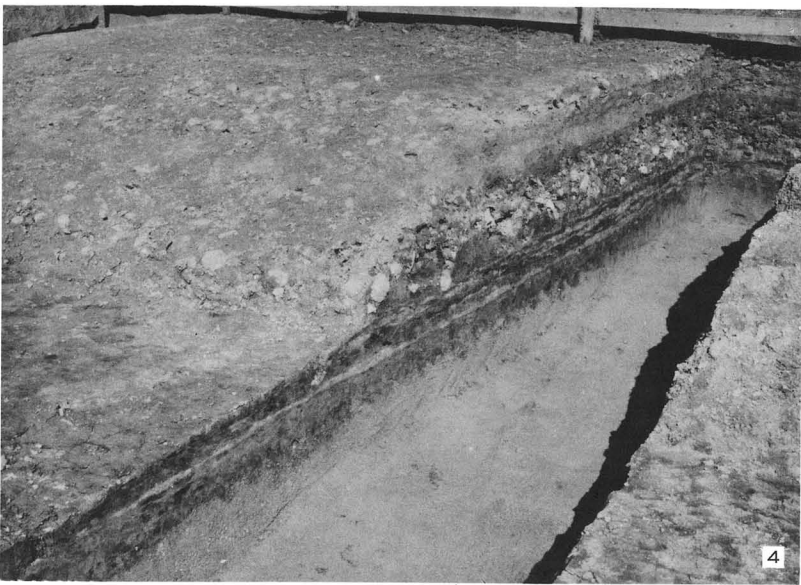
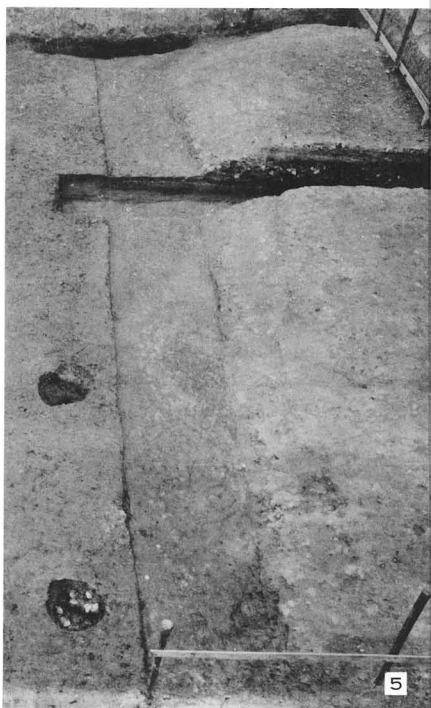
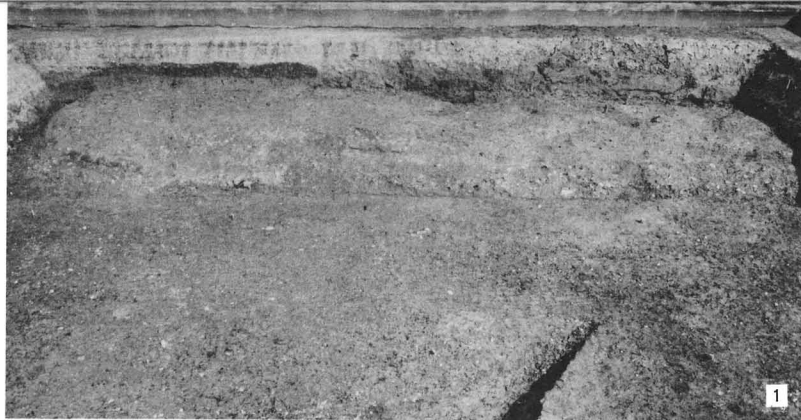
羅城門跡附近航空写真



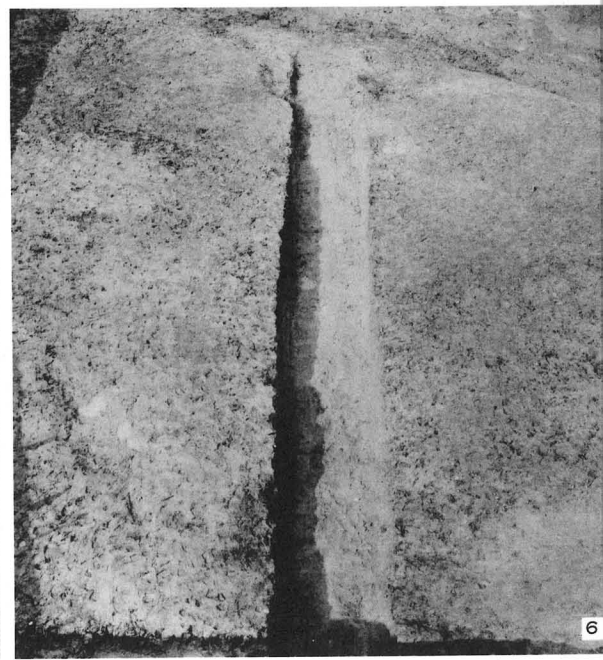
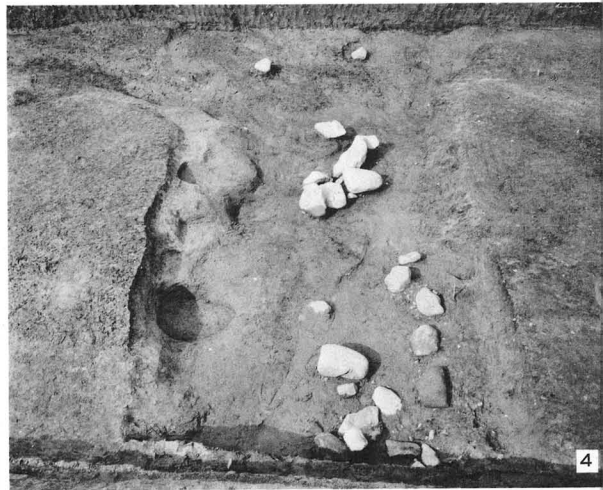
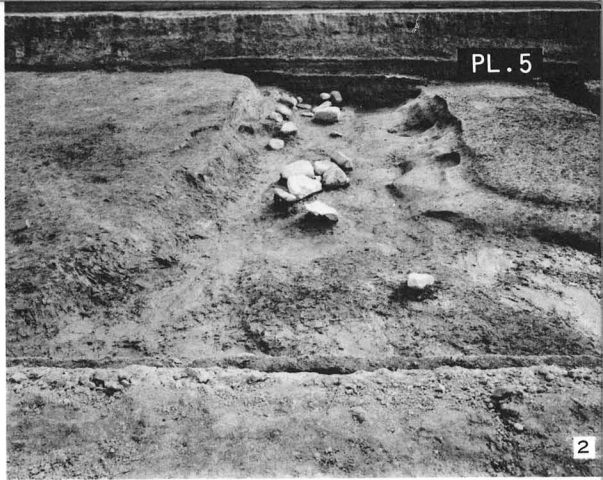
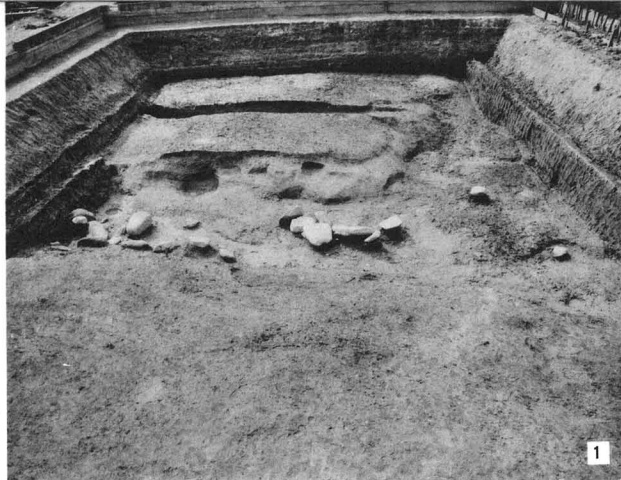
1. 来生橋 (南から) 2. 第3次発掘調査地 (西から)



1 第三次発掘調査区遺構全景（東から） 2 同 左（西から）



1 羅城門基壇 (西から) 2 同左 3 同左 (南から) 4 羅城門基壇断面
5 羅城門基壇 (南から) 6 羅城門基壇版築 (南から)



1 朱雀大路西側溝延長部 (東から) 2 同 (北から) 3 同 護岸石
4 同 (南から) 5 暗渠 (北から) 6 同 (南から)



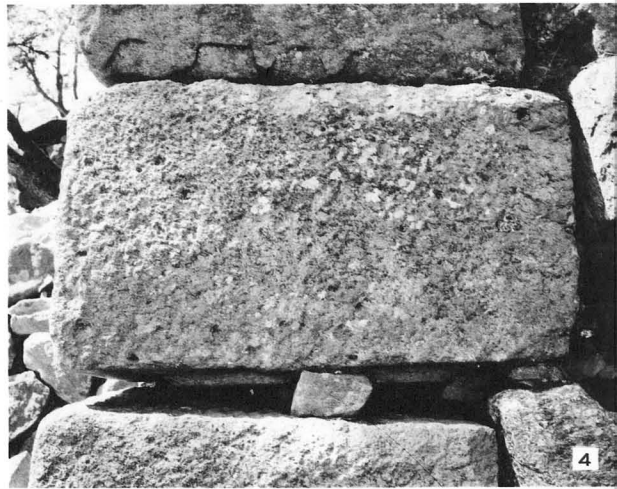
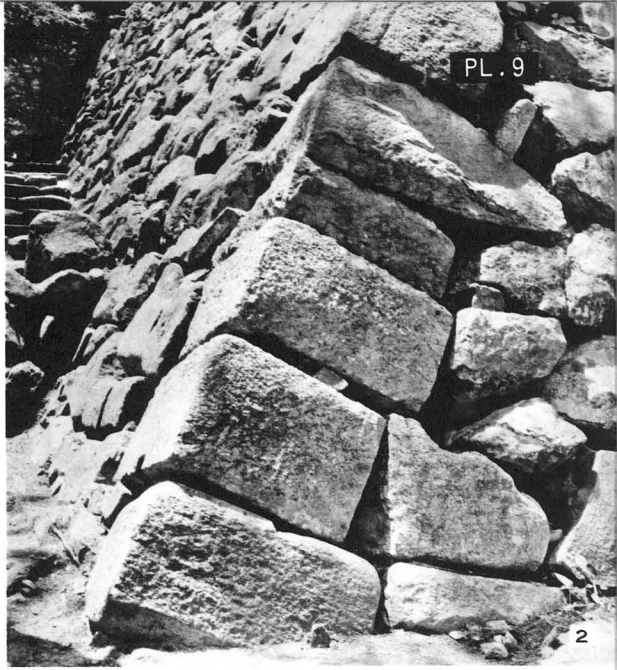
1 朱雀大路西側溝 (東から) 2 朱雀大路西側築地 (西から)
 3 九条大路北側溝 (南から) 4 九条大路北側築地・側溝 (北から)



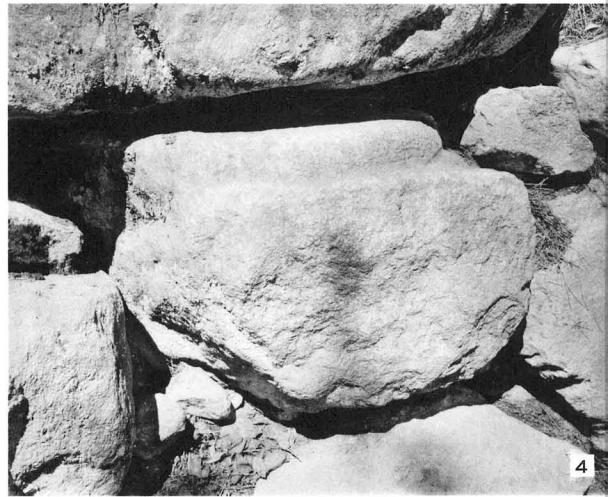
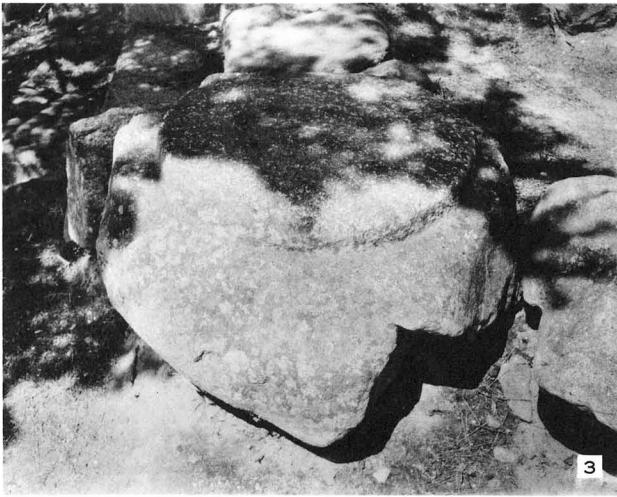
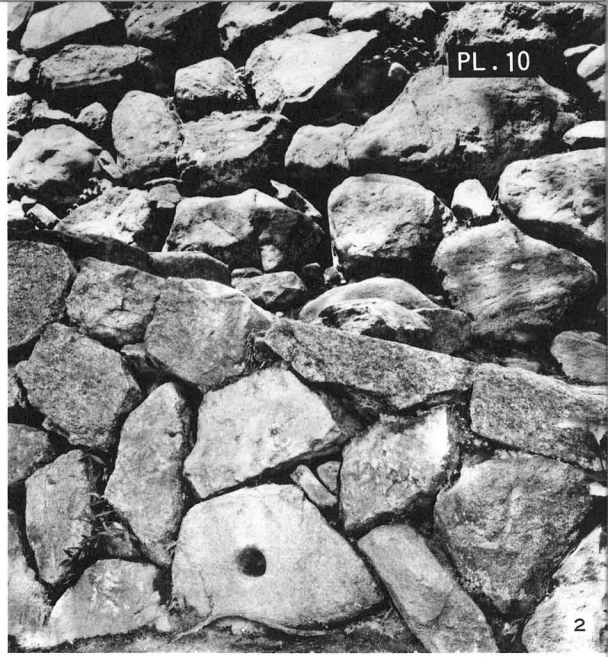
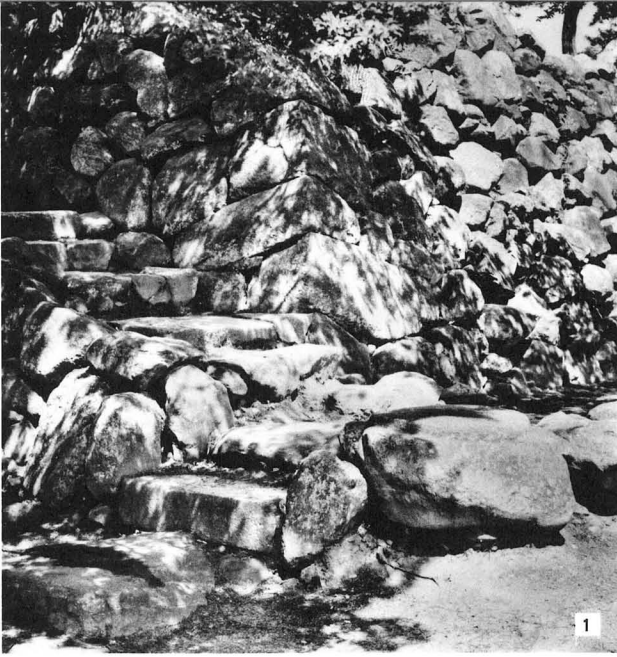
朱雀大路西側築地と瓦転落状況（北から）



1 朱雀大路西側溝護岸しがらみ (西から) 2 朱雀大路西側築地瓦転落状況 (西から)



大和郡山城天主台石垣の礎石



大和郡山城天主台石垣の礎石

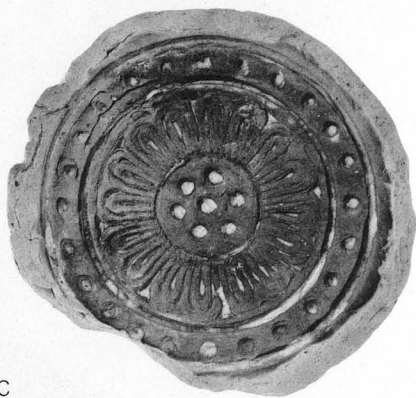


6133 B



1 6316 B

2



2
6684 C



3 6316 I

4



6285



5 6316 D b

6



6308 B b



7 6316 D a

8

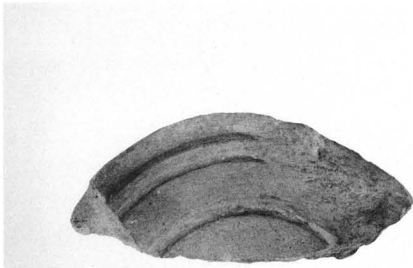


6304 L

1 6710Ab - 6710c



2



6012A

3 6711



4



6694

5 6711



6

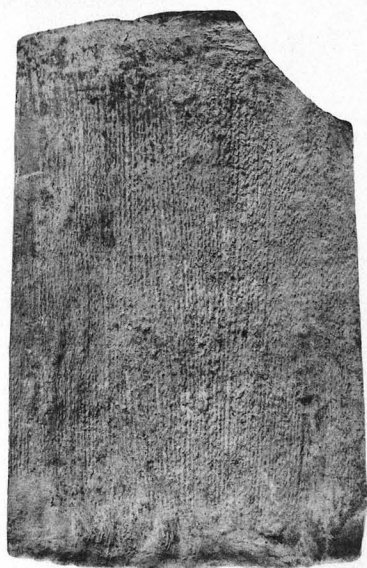


6572

7 6721 F



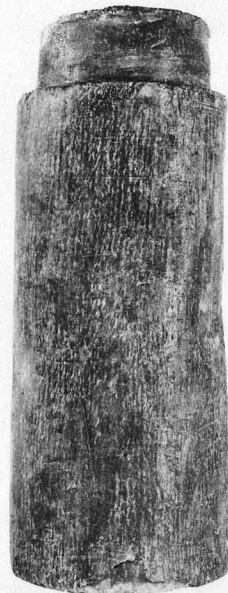
8



1



2



3

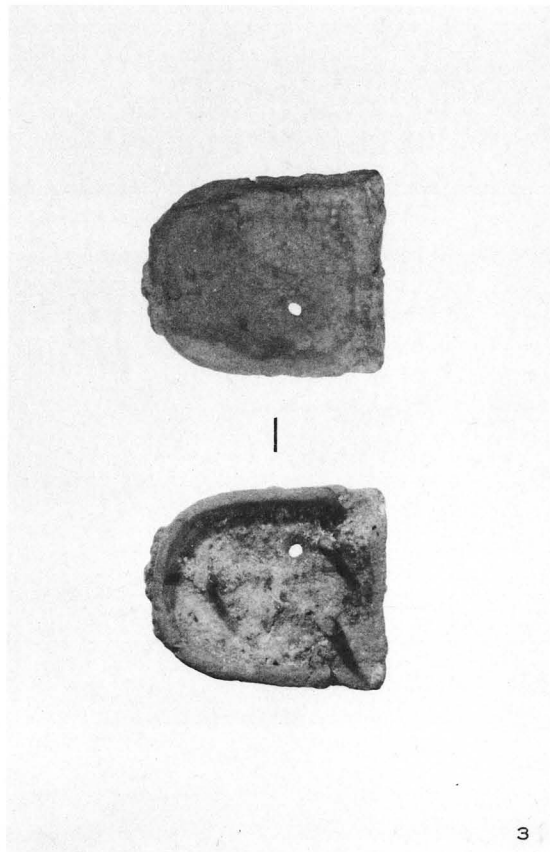
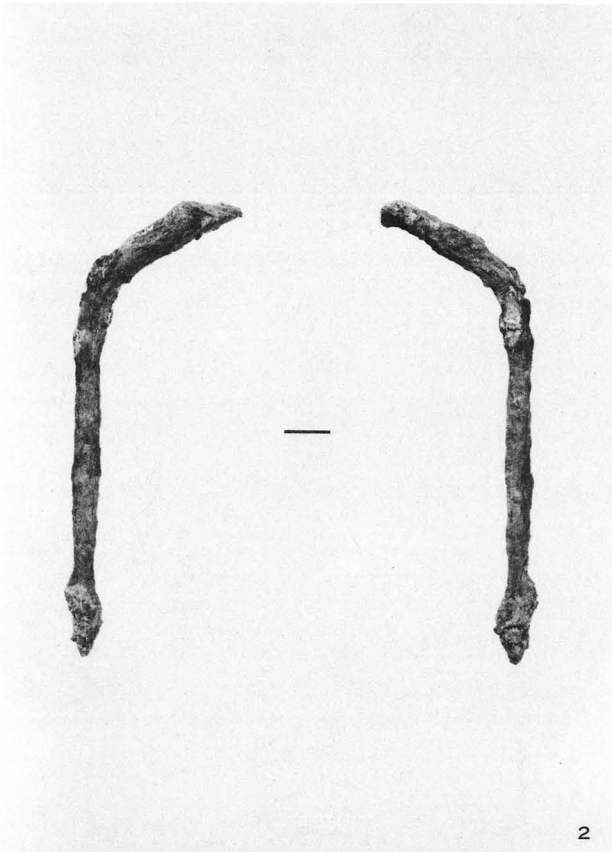


4

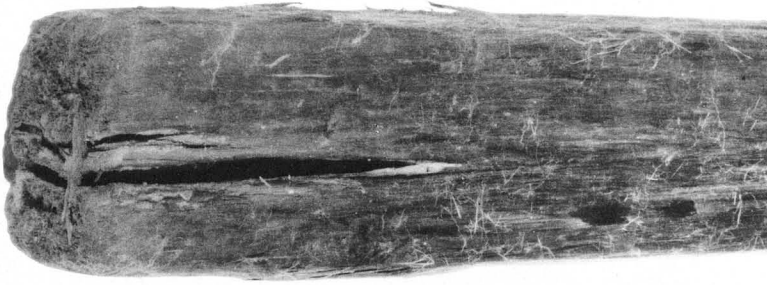


5

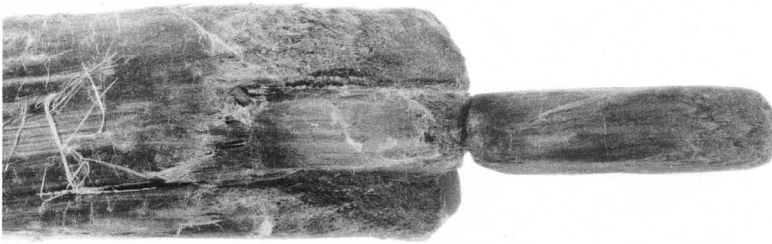
1 平瓦 2 面戸瓦 3 丸瓦 4・5 瓦質土器



1 人面土器 2 釘 3 帶金具



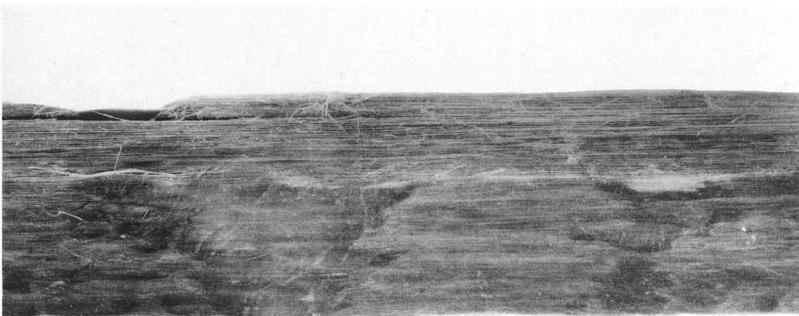
1



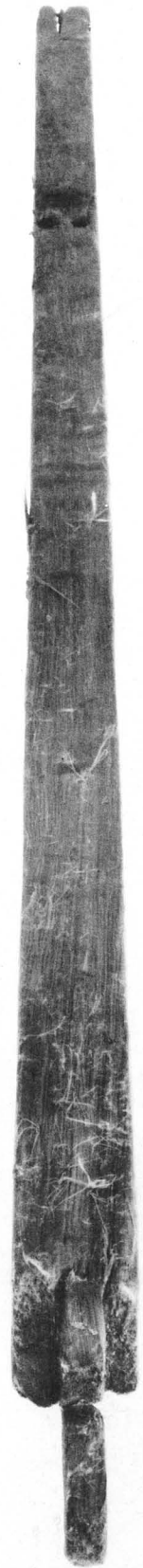
2



3



4



5

極 1 極先木口 2 挿み組手 3 木舞えつり 4 桁あたり 5 全 景 (上面)