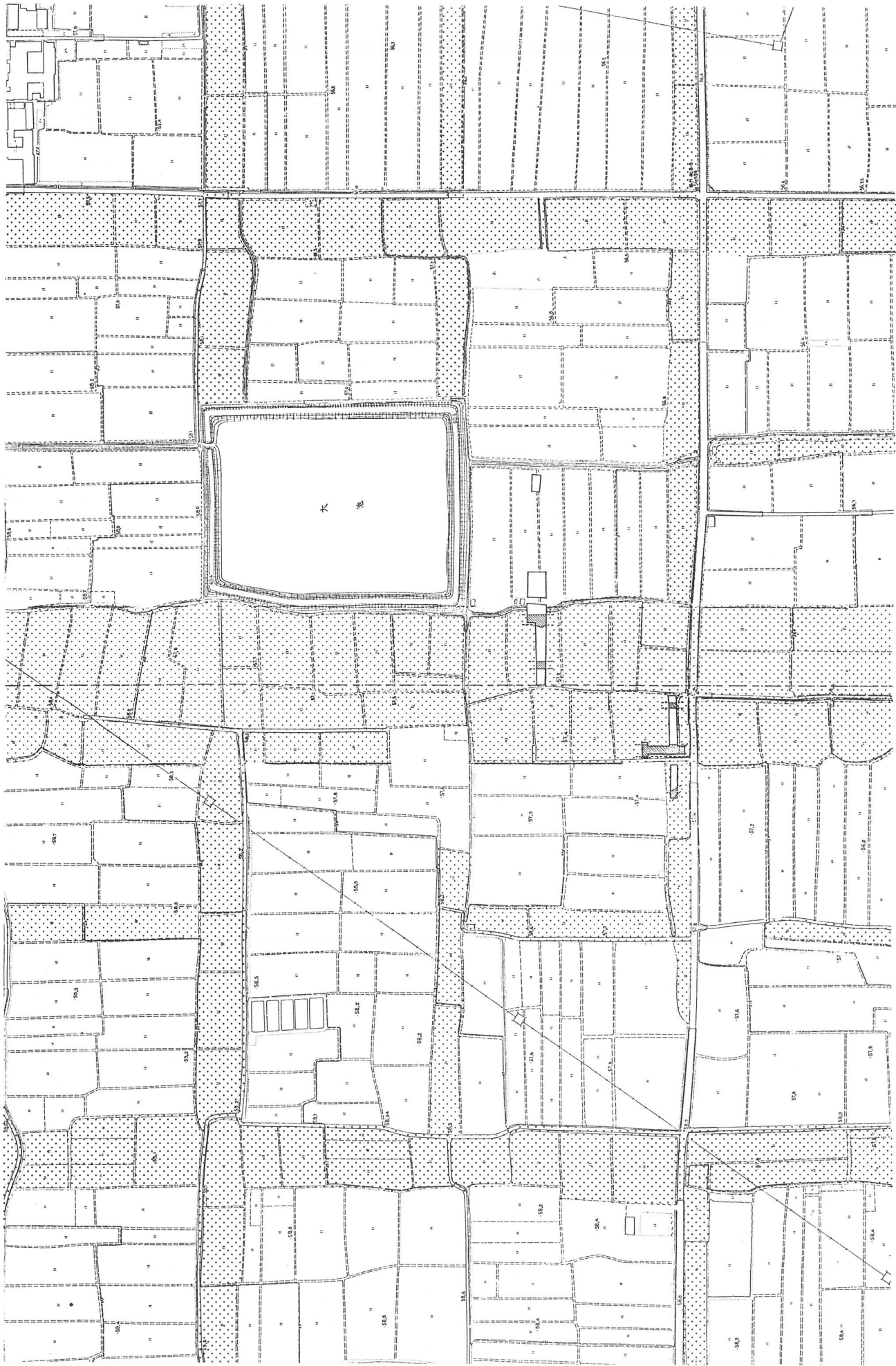
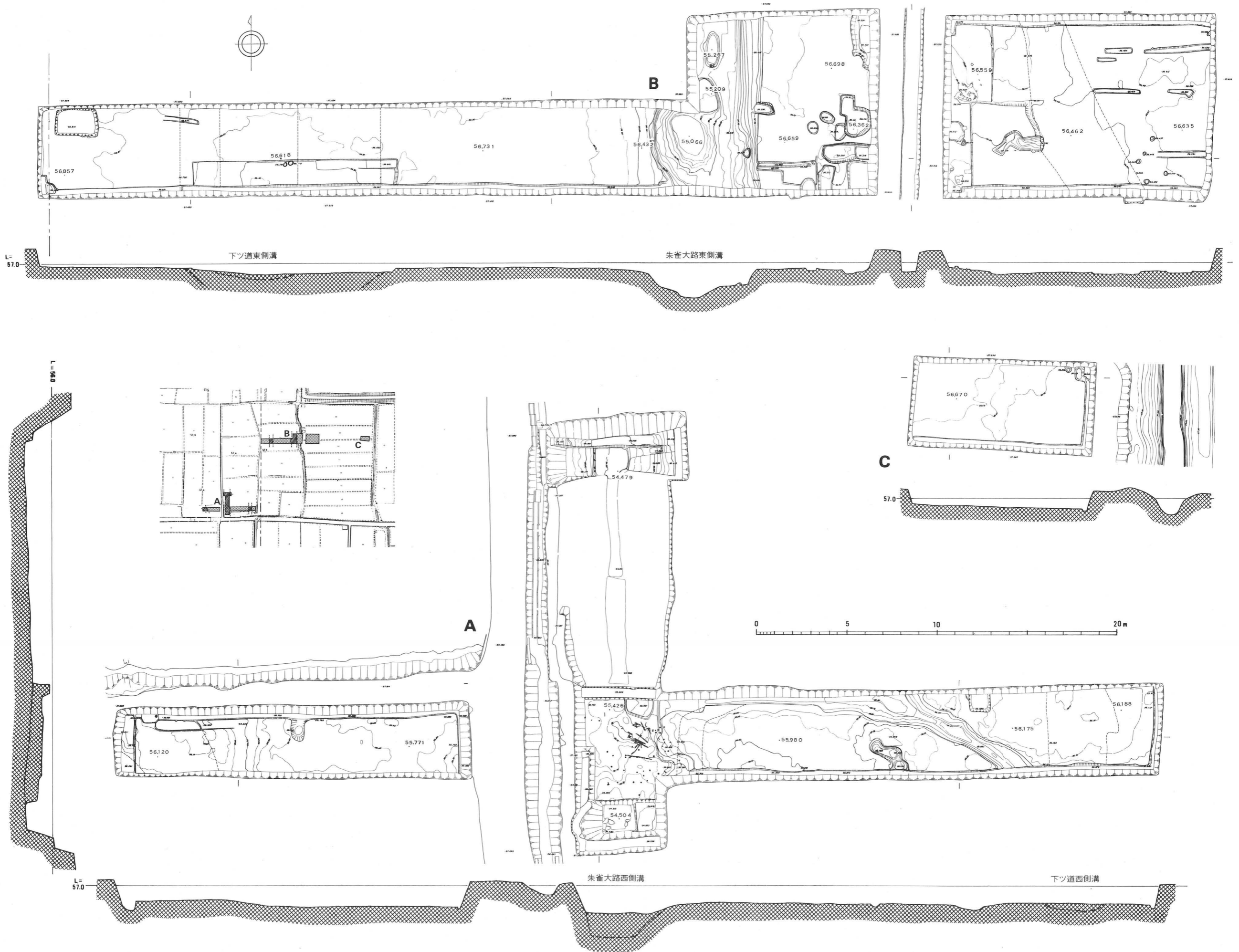


図面・図版

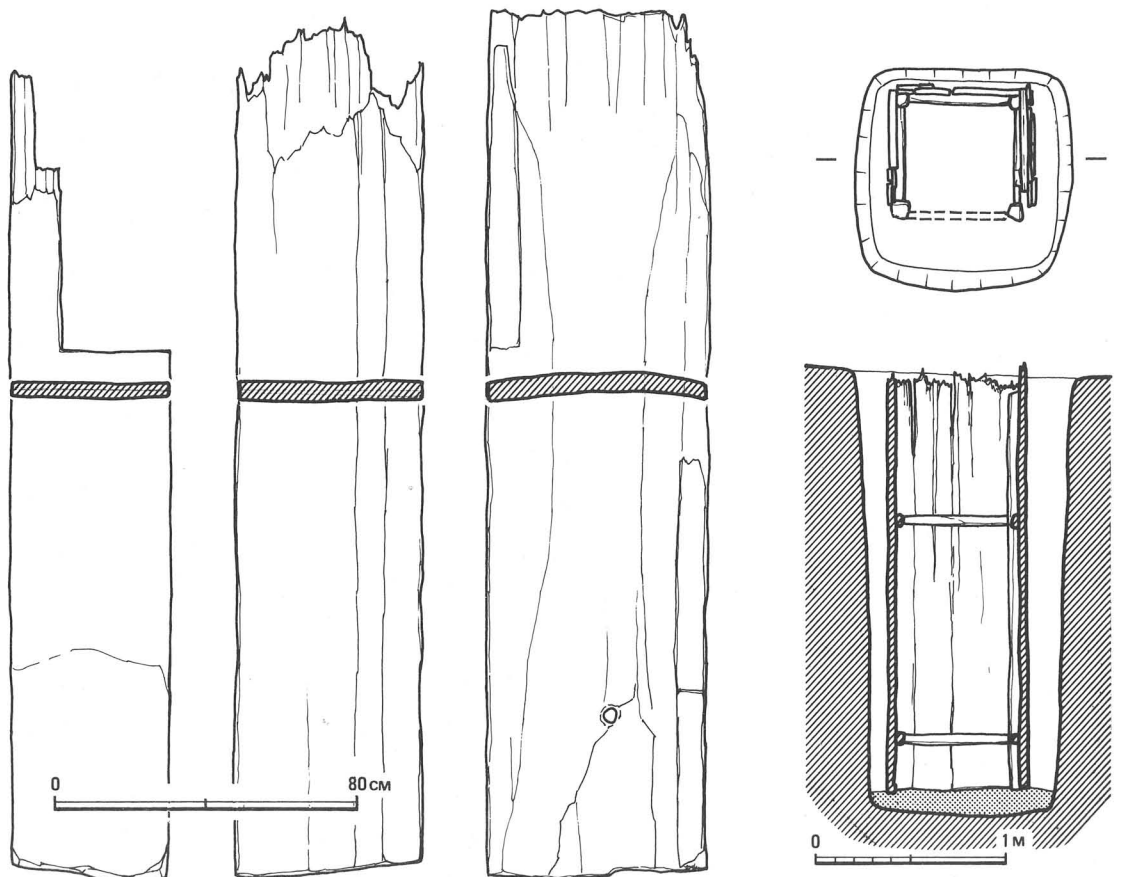


発掘区周辺地形図 1 : 3000





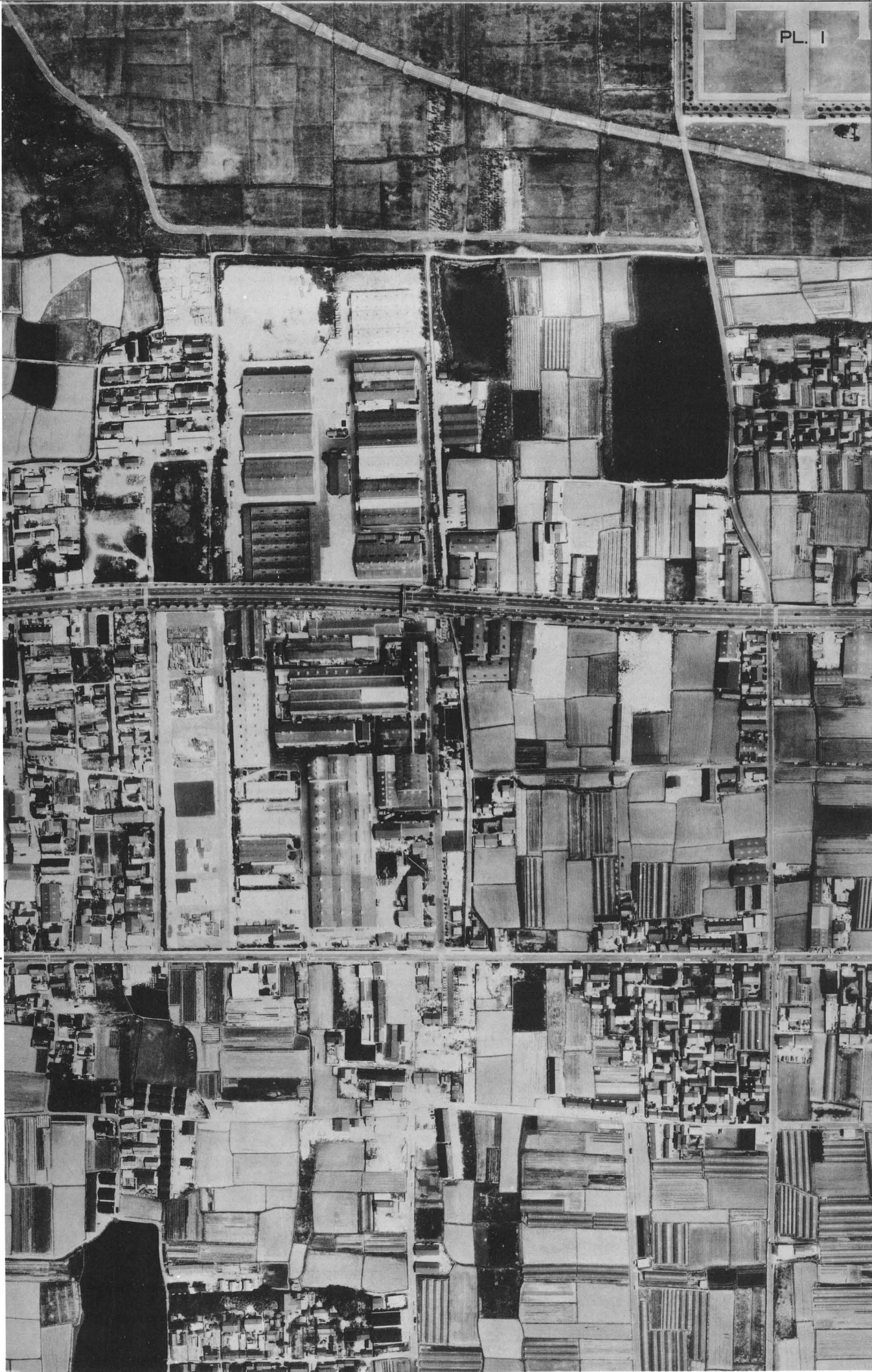
発掘遺構配置図 1 : 3300



井戸 2 実測図

二条大路

三条大路



坊間大路

朱雀大路

坊間大路

四条大路

五条大路



坊間大路

朱雀大路

坊間大路

六条大路

七条大路



坊間大路

朱雀大路

坊間大路

八条大路

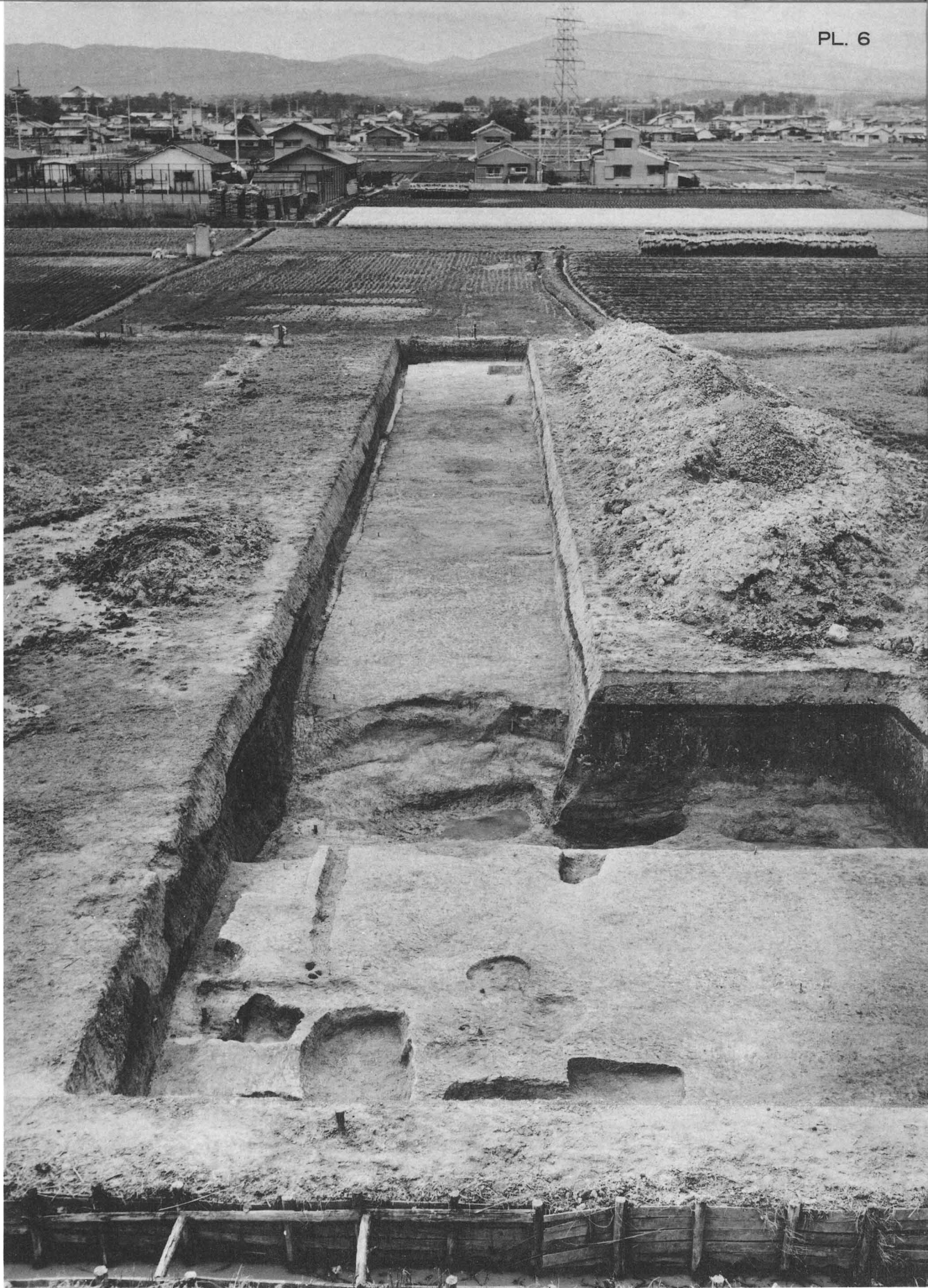
九条大路



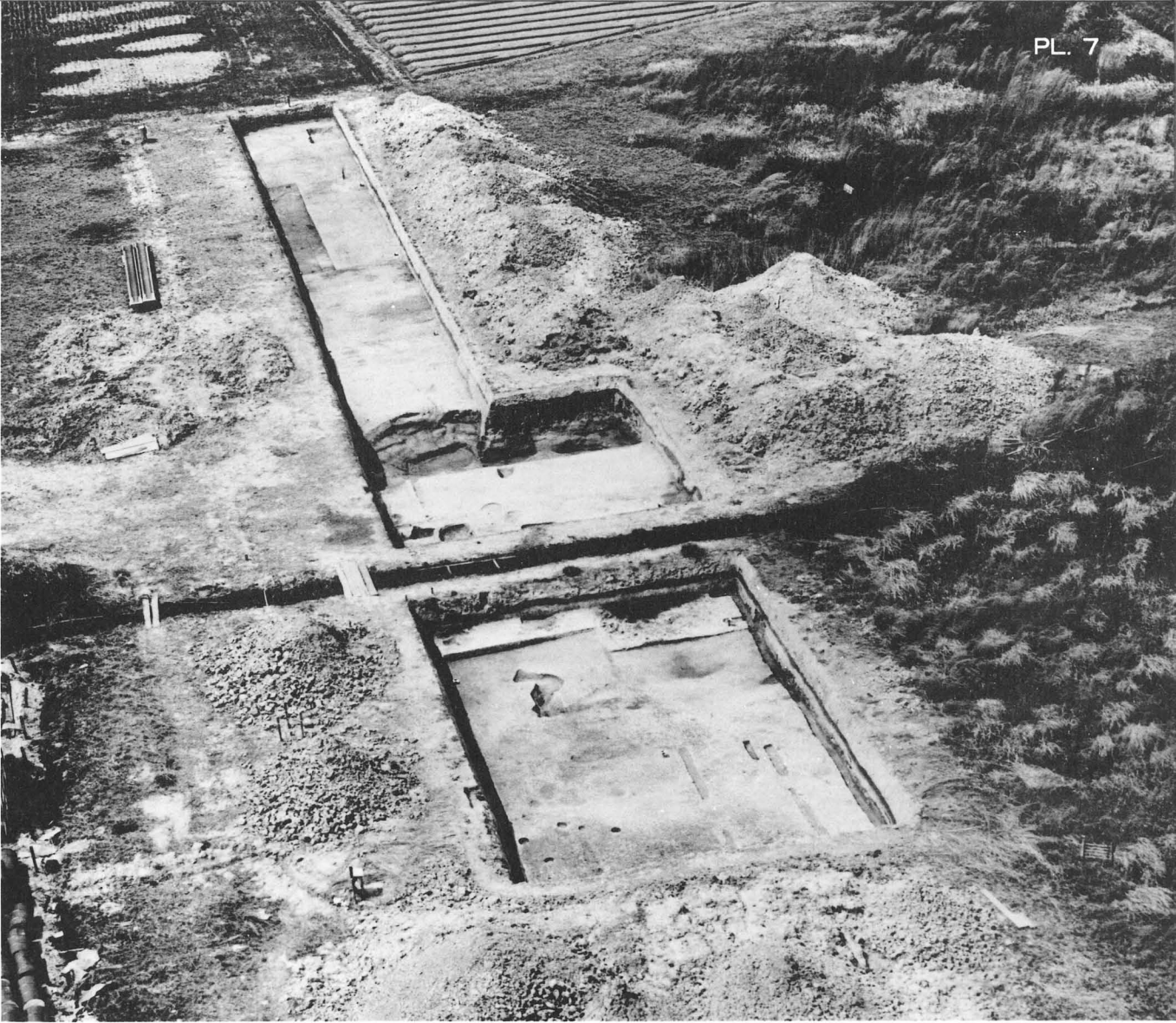
朱雀大路

発掘区上空から平城宮跡を望む

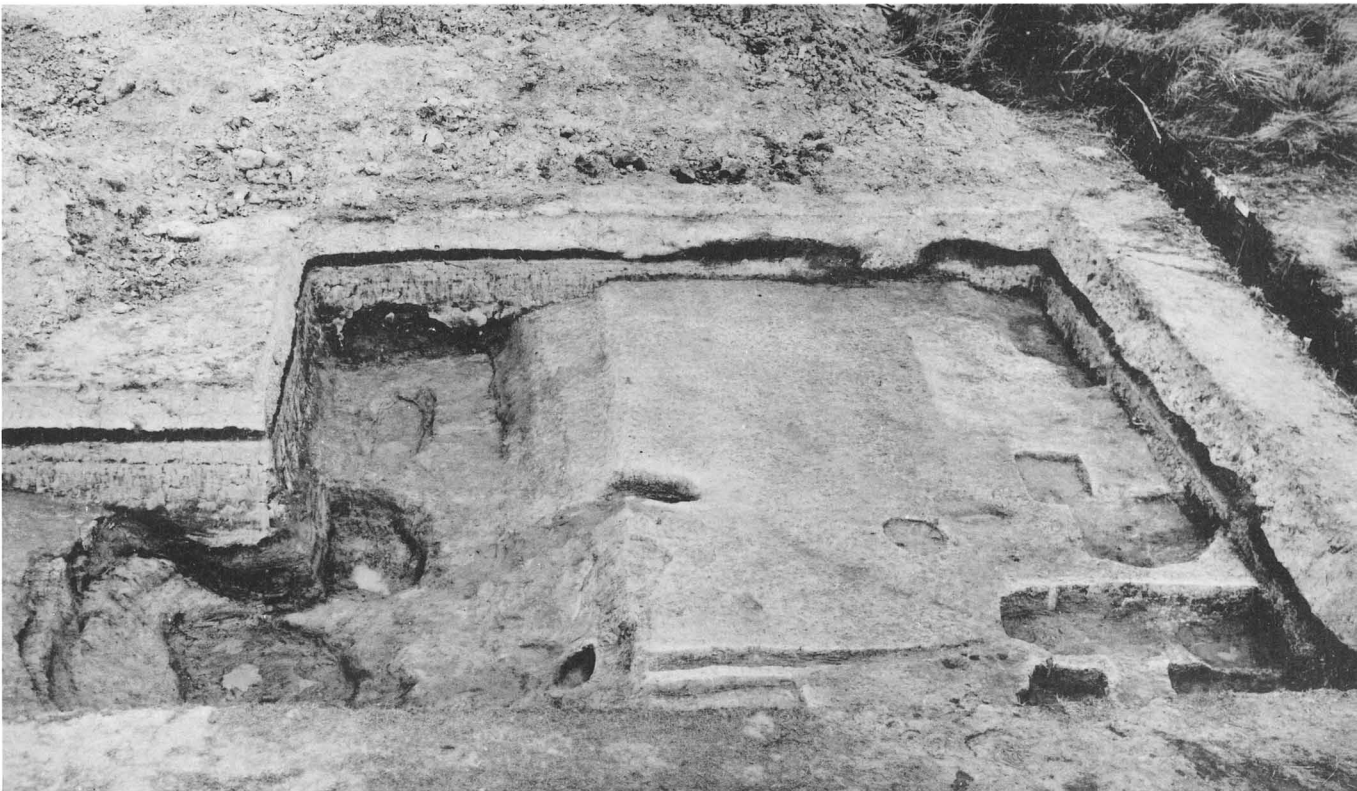




朱雀大路路面と東側溝

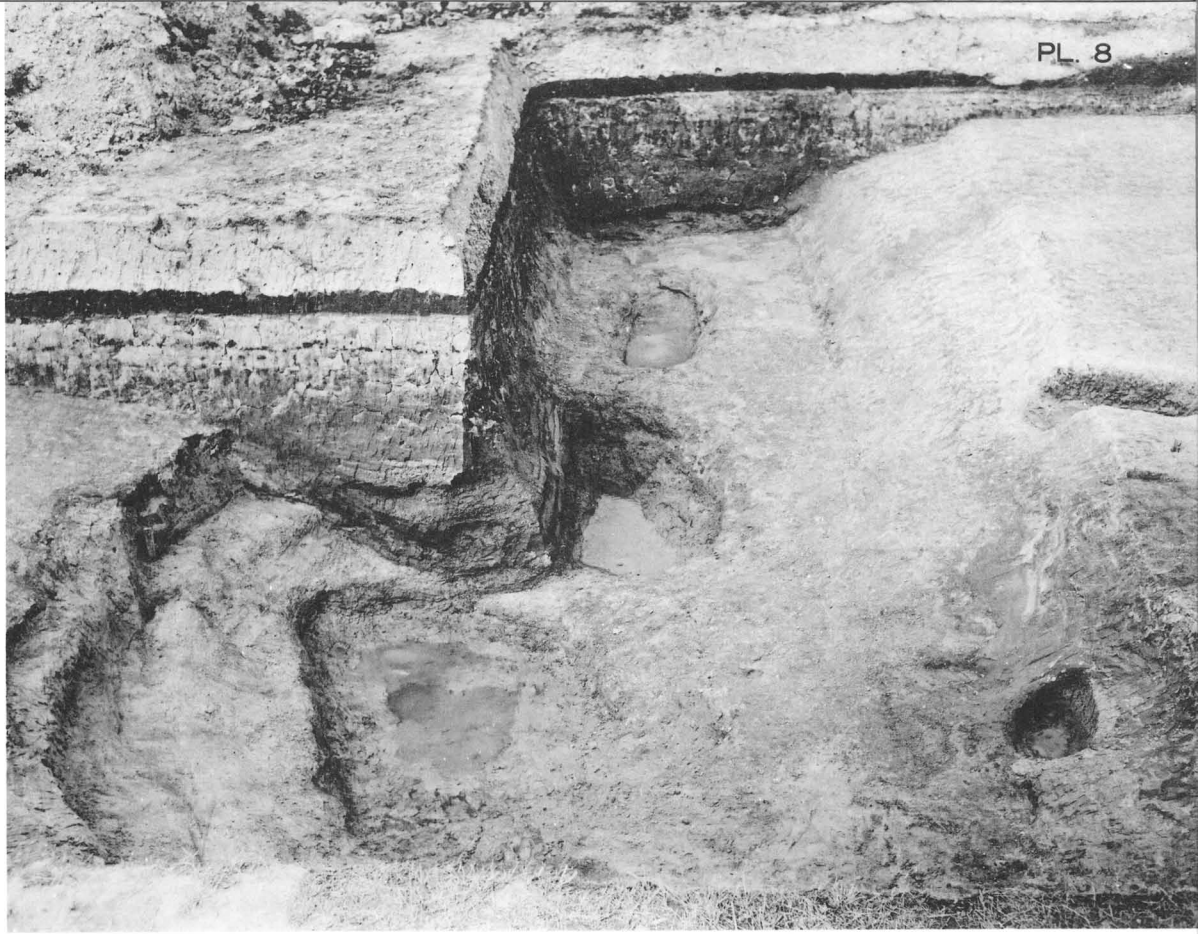


1

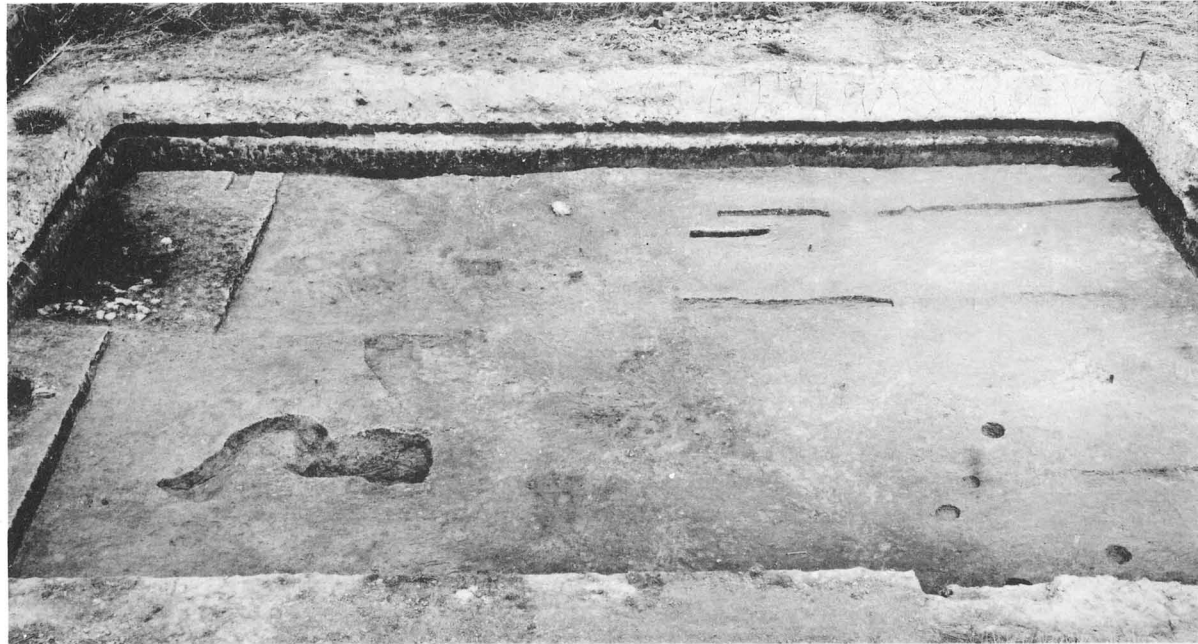


2

1 東瓮掘区全景 2 東側溝



1



2



3

- 1 東側溝
- 2 左京六条一坊
- 3 同上東端



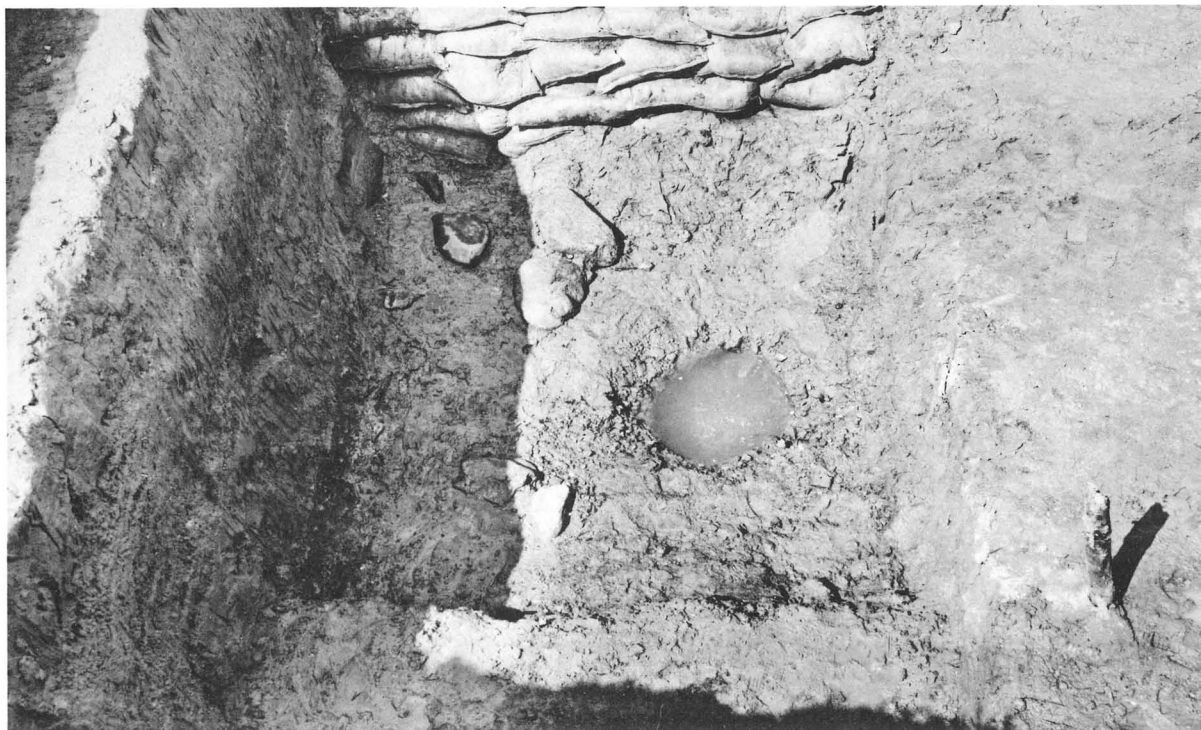
朱雀大路西侧溝



1 西側溝
北壁



2 西側溝
護岸状況



3 西側溝
玉石の散乱



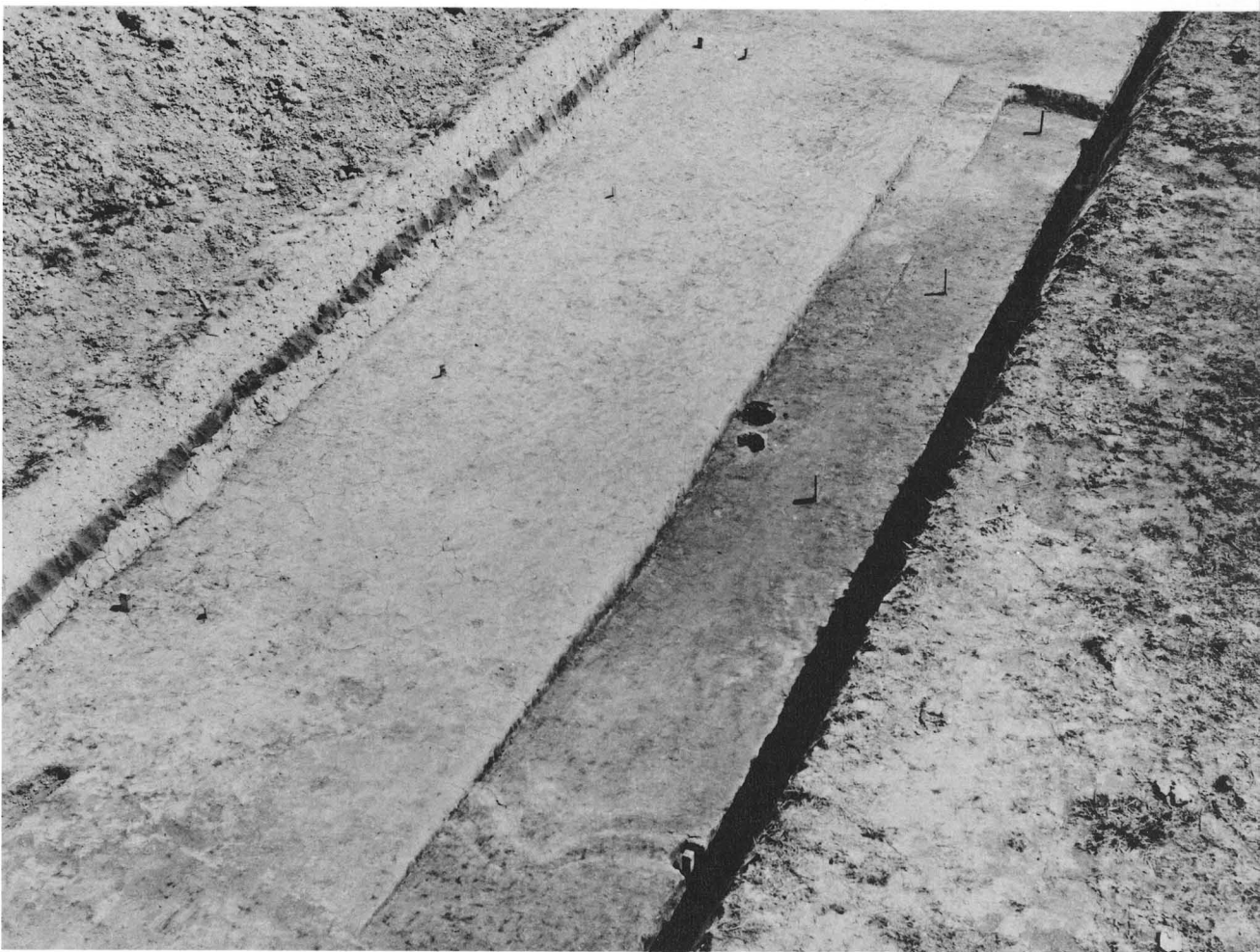
1 右京六条一坊



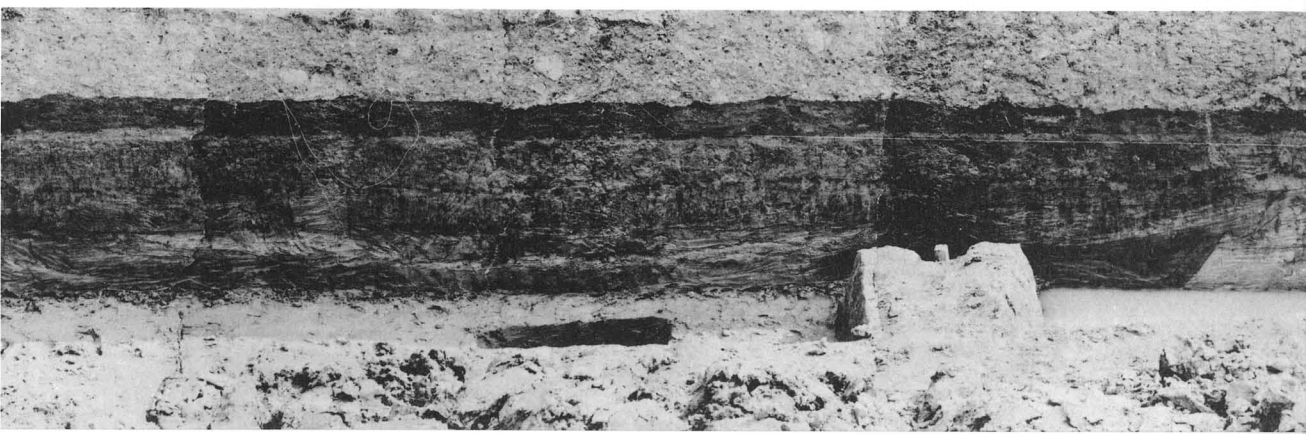
2 朱雀大路路面



1 下ッ道
西側溝



2 下ッ道
東側溝と
堀割り



3 同上断面



新形式



6316J



巴文



6710Ab



6316G



6710Ab



6316Db



6685C



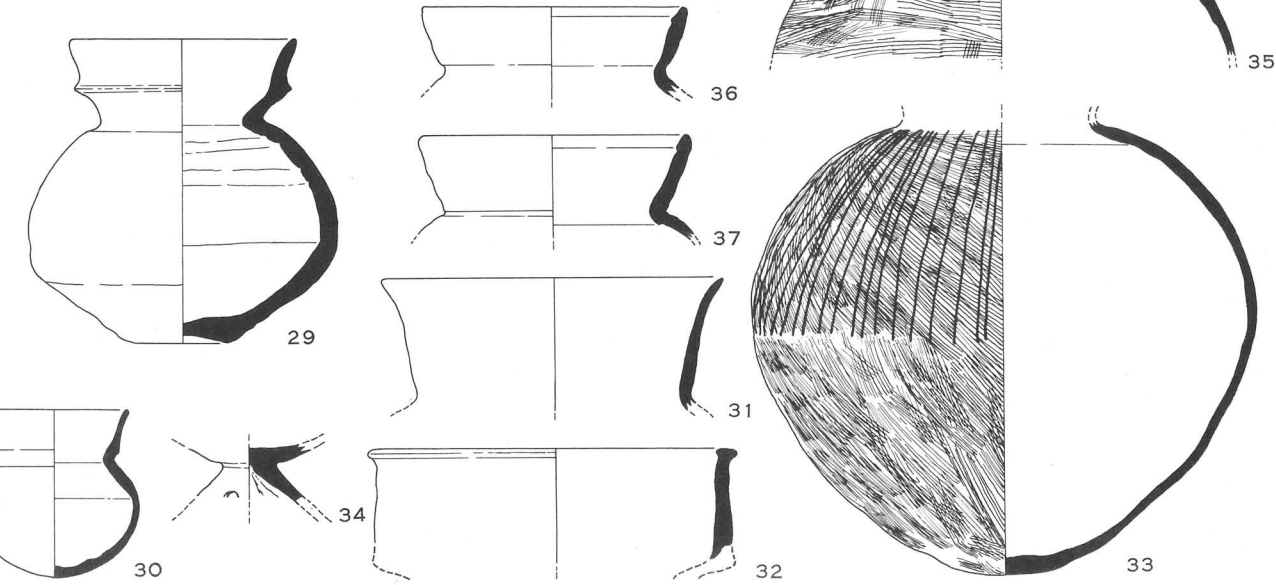
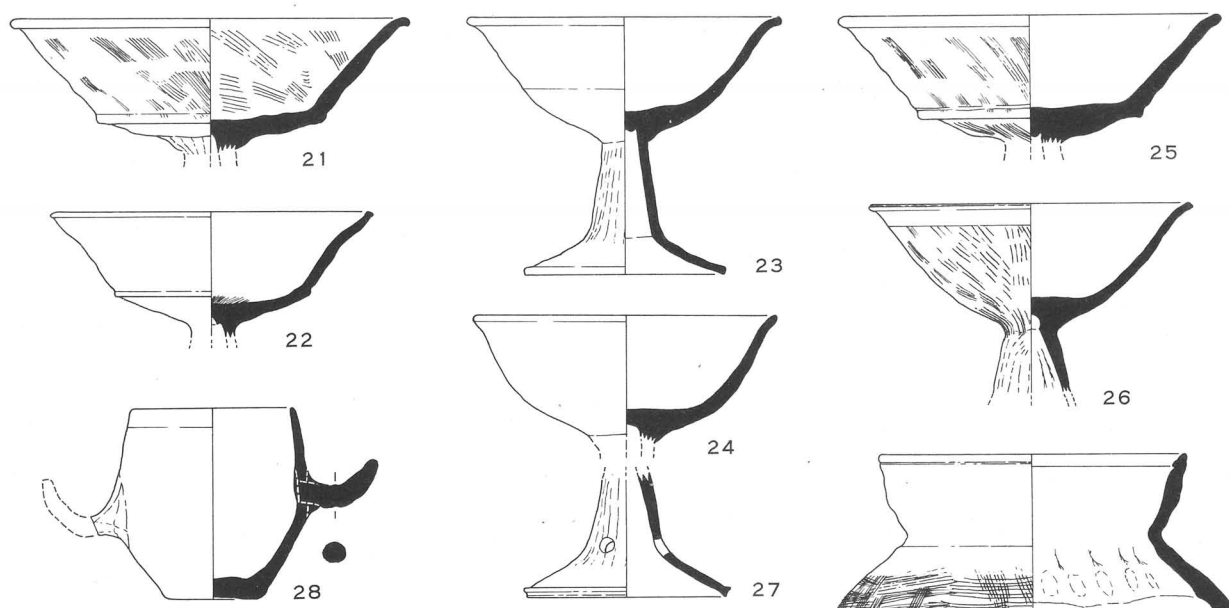
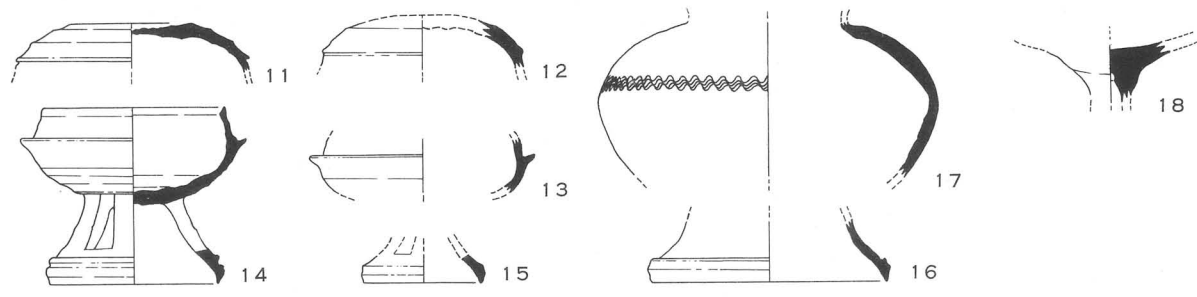
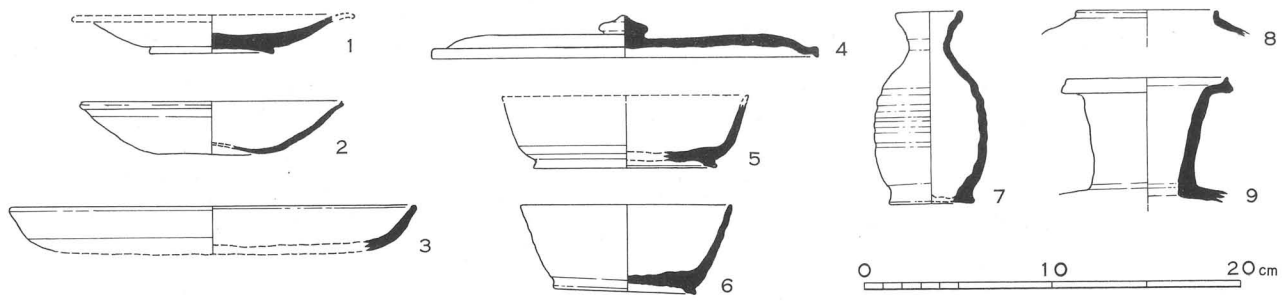
6225A



6685C



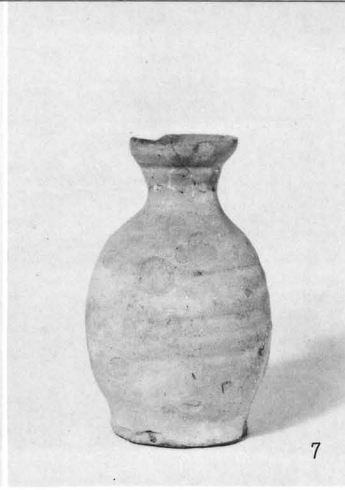
6304B



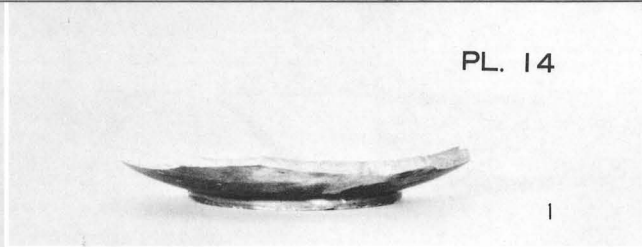
1 ~ 9 大路西側溝出土土器 11 ~ 18 下ツ道側溝出土土器 21 ~ 37 古墳時代溝出土土器



9



7



1



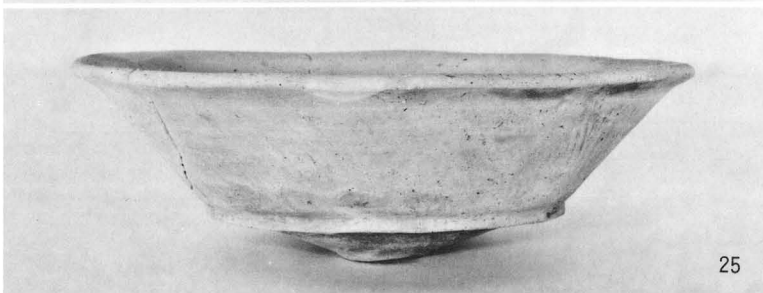
6



22



14



25



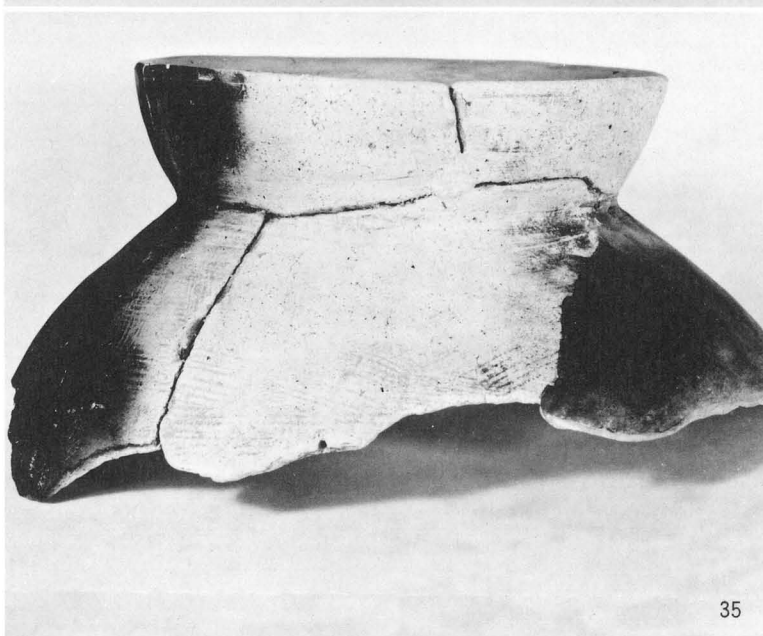
30



23



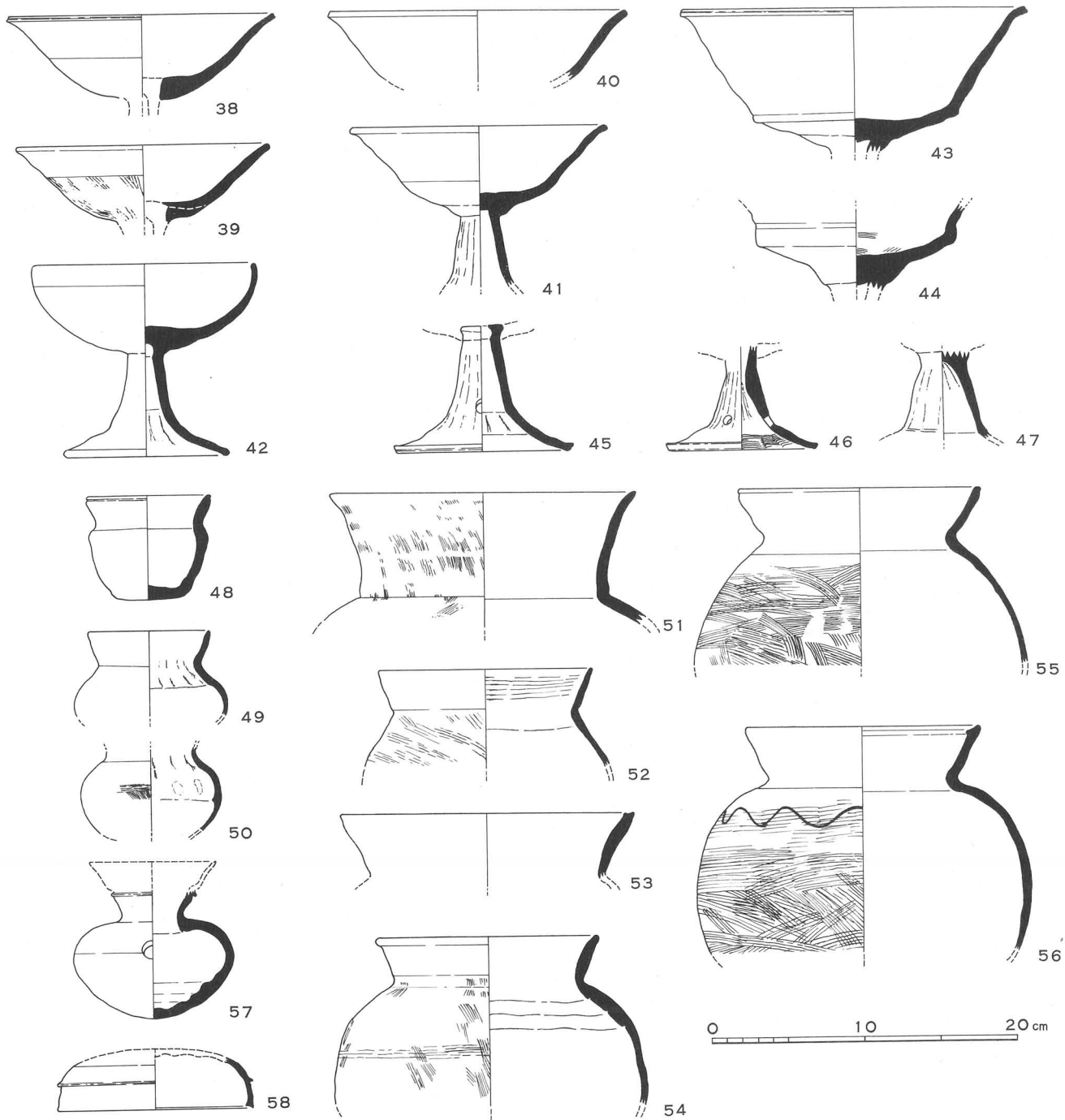
28



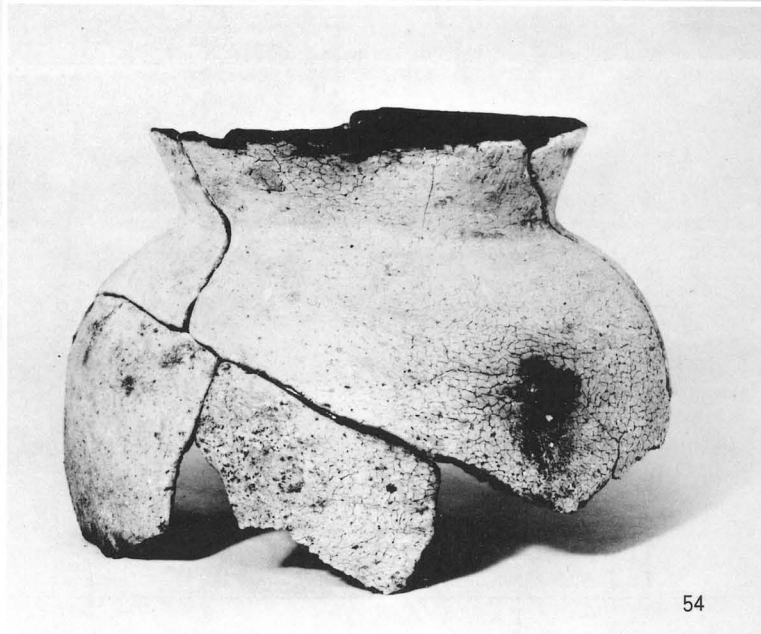
35

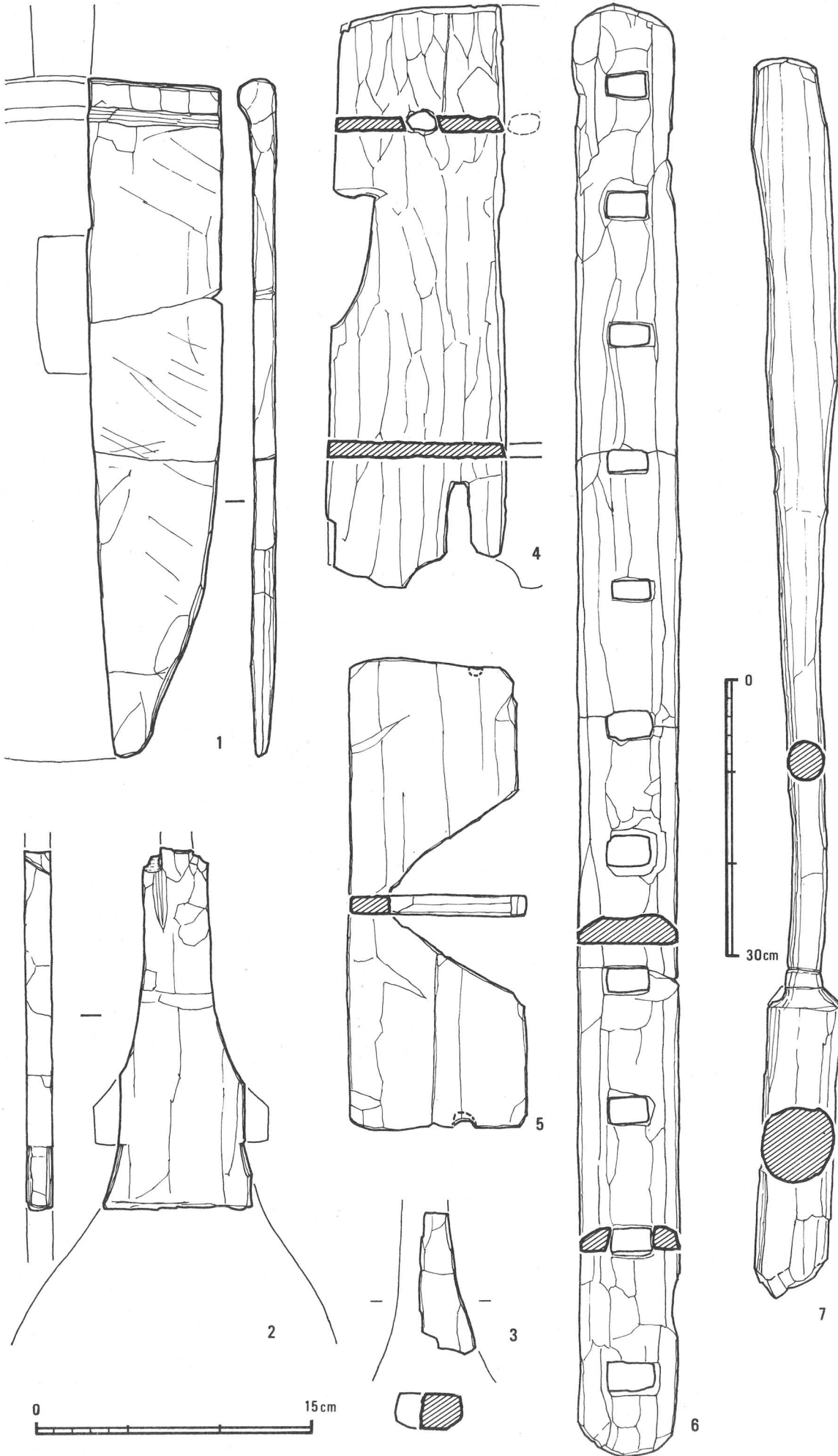


29

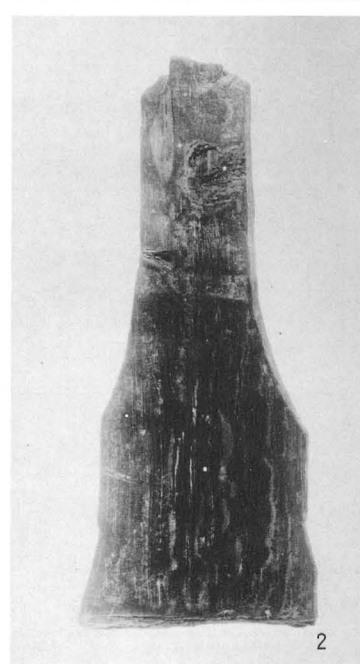
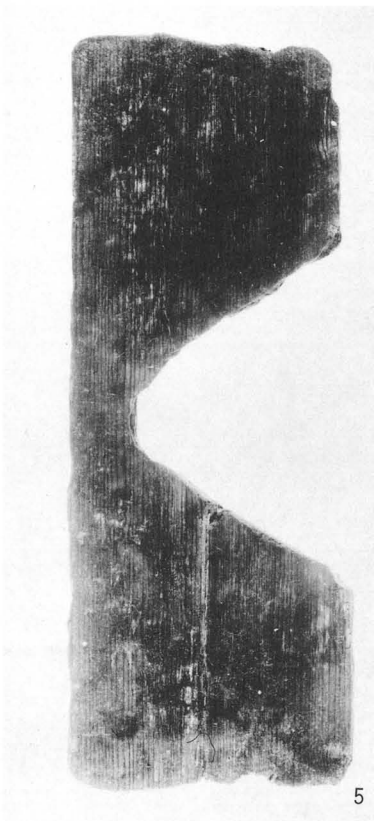
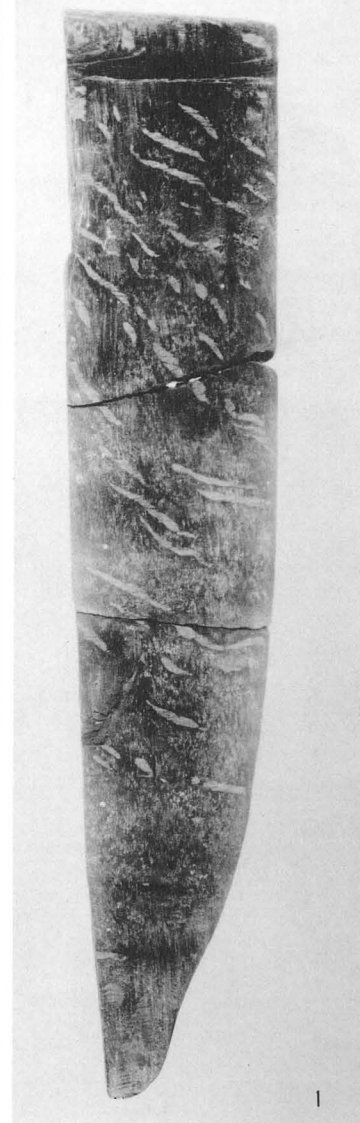
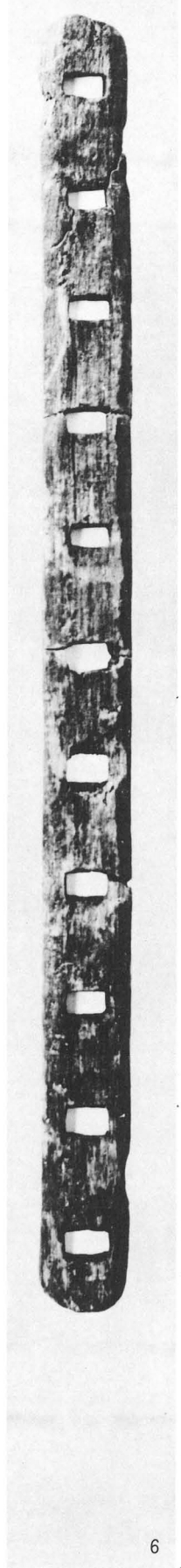
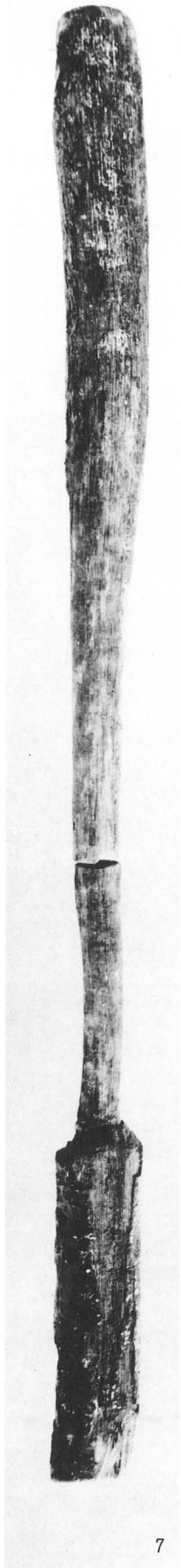


38~58 古墳時代溝出土土器





1 ~ 7 古墳時代溝出土木製品





奈良市柏木町付近航空写真 1 赤外写真 2 パンクロ写真

前川遺跡



1 全景



2 井戸



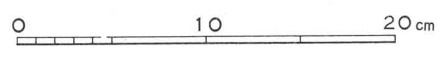
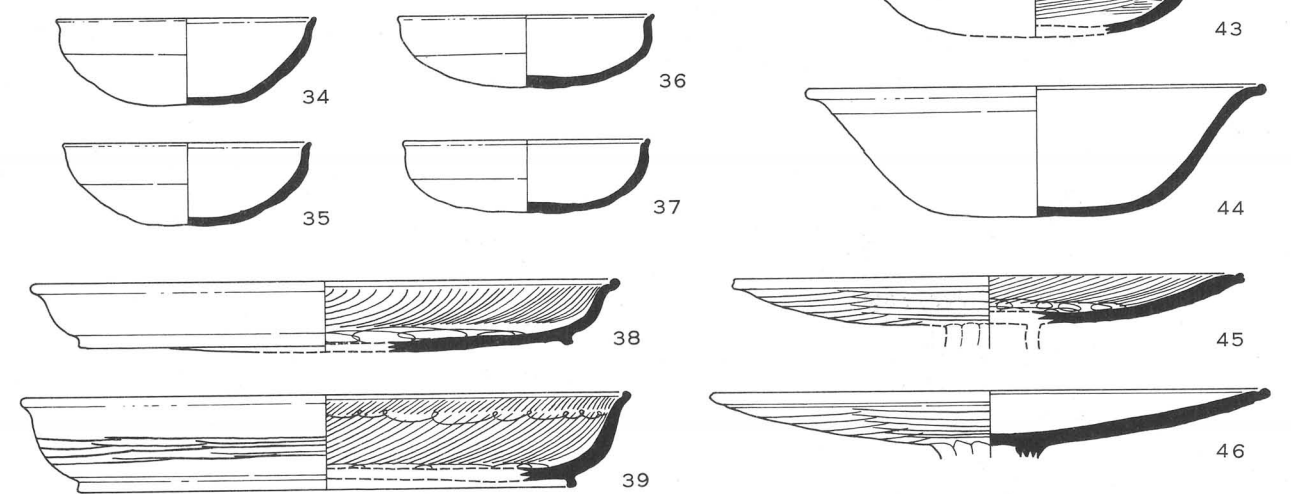
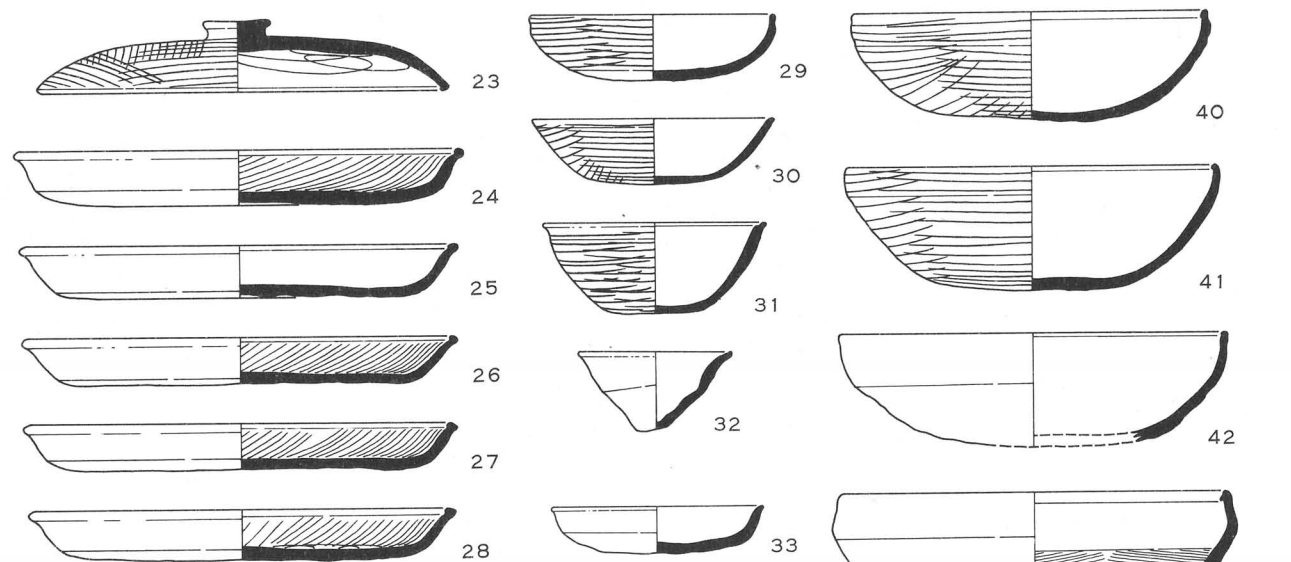
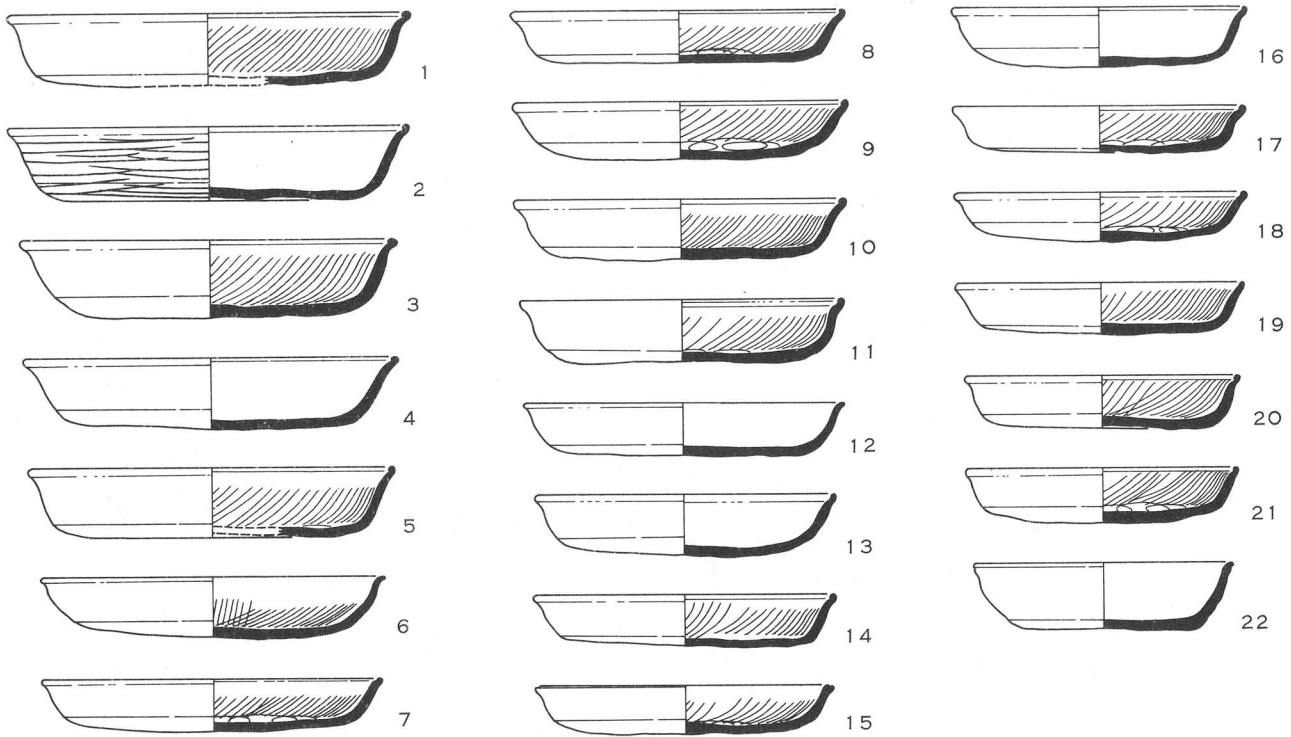
3 発掘状況



1 井戸細部



2 土器出土状況



1 · 11 · 14 · 22 · 24 · 26 · 32 · 35 · 41 · 42 · 44 · 46 井戸 1 出土土器
 2 ~ 10 · 12 · 13 · 15 ~ 21 · 23 · 25 · 27 ~ 31 · 33 · 34 · 36 ~ 40 · 43 · 45 井戸 2 出土土器



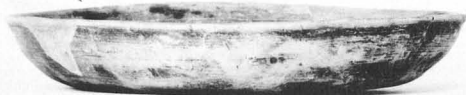
12



3



17



6



16



10



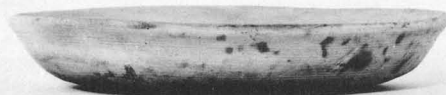
19



11



22



9



33



23



30



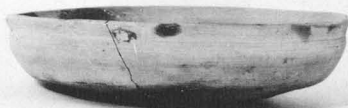
25



29



28



37



40



34



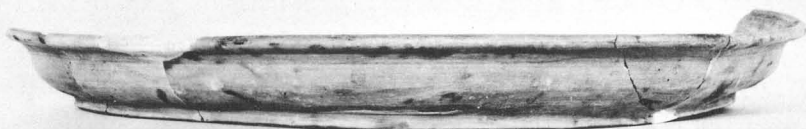
50



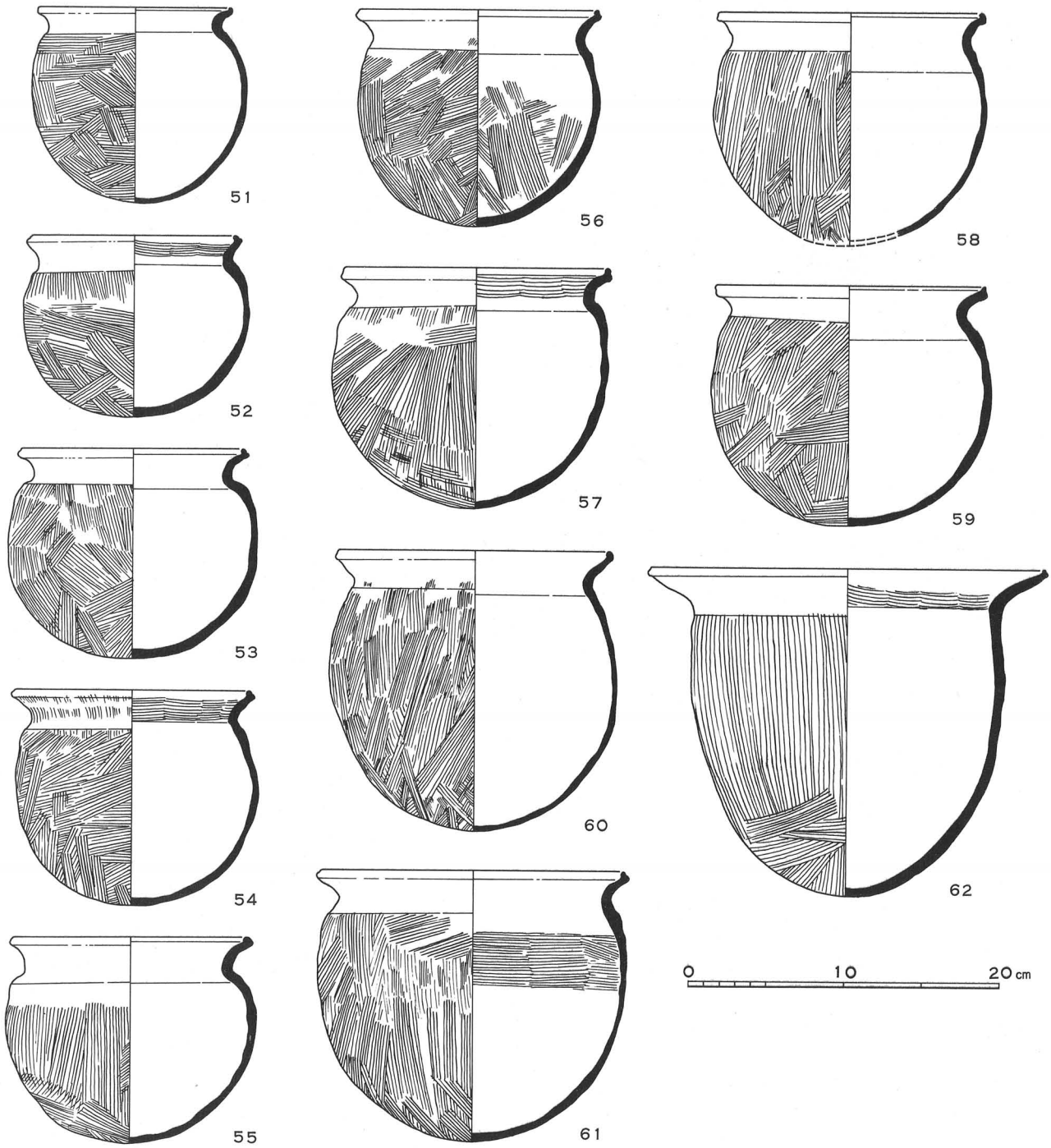
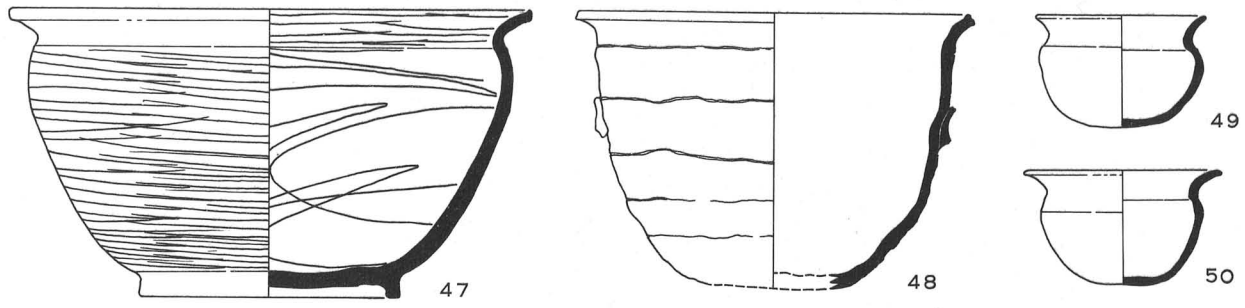
44



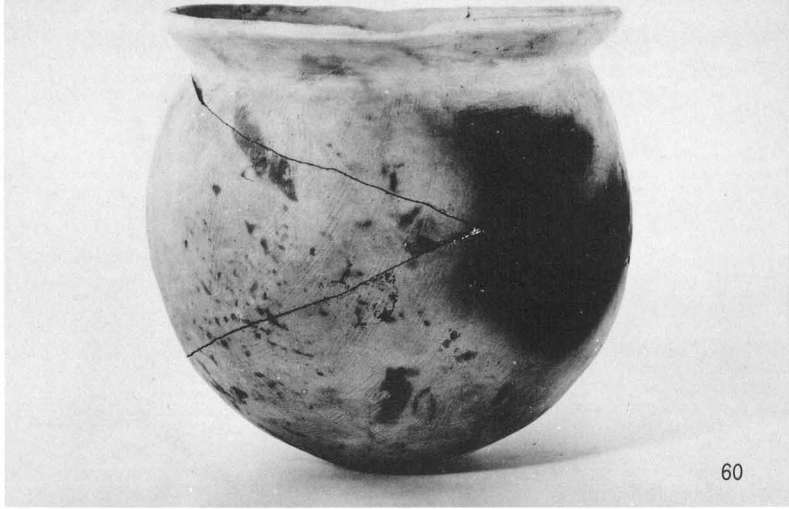
32

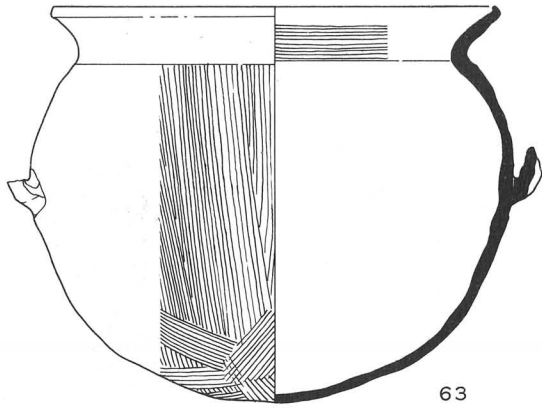


38

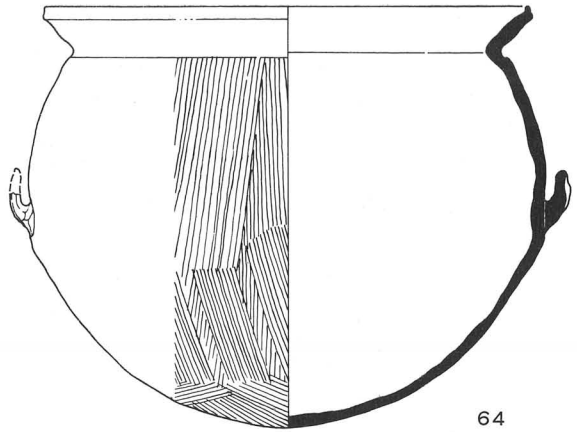


47・58・60・61 井戸1出土土器 48~57・59・62 井戸2出土土器

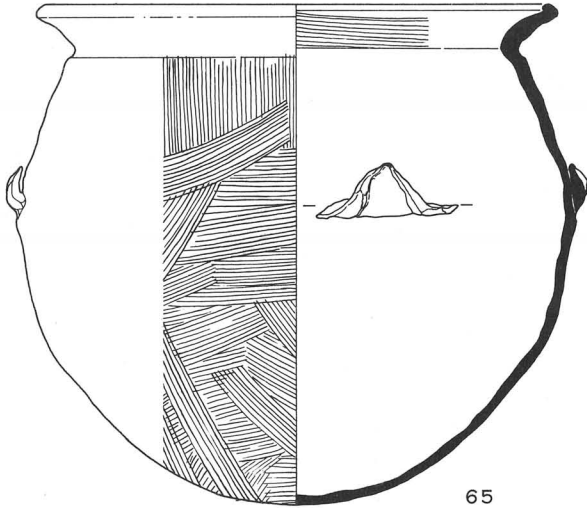




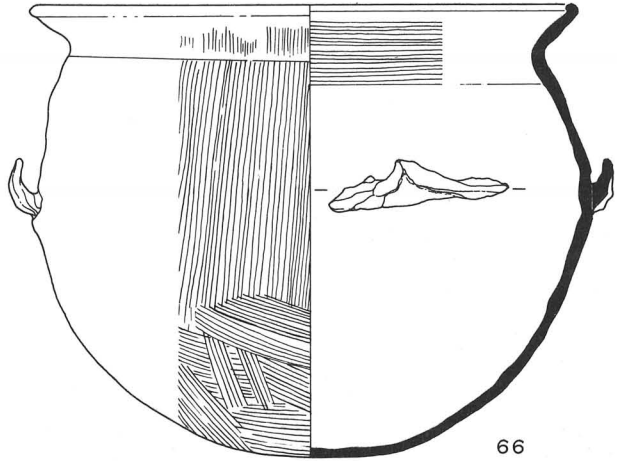
63



64

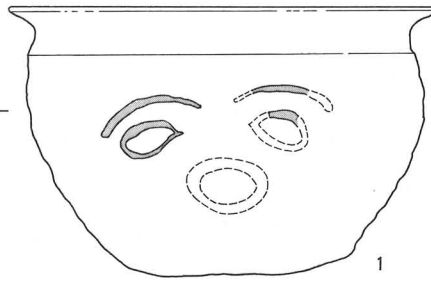
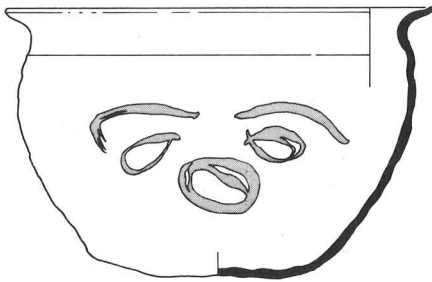


65

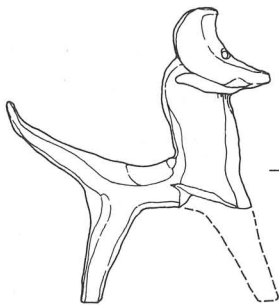


66

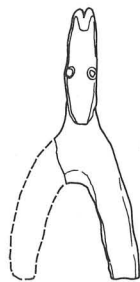
0 10 20 cm



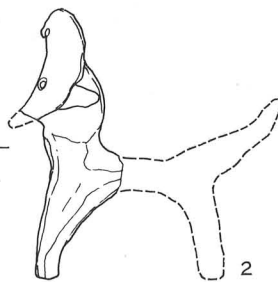
1



1



2



2

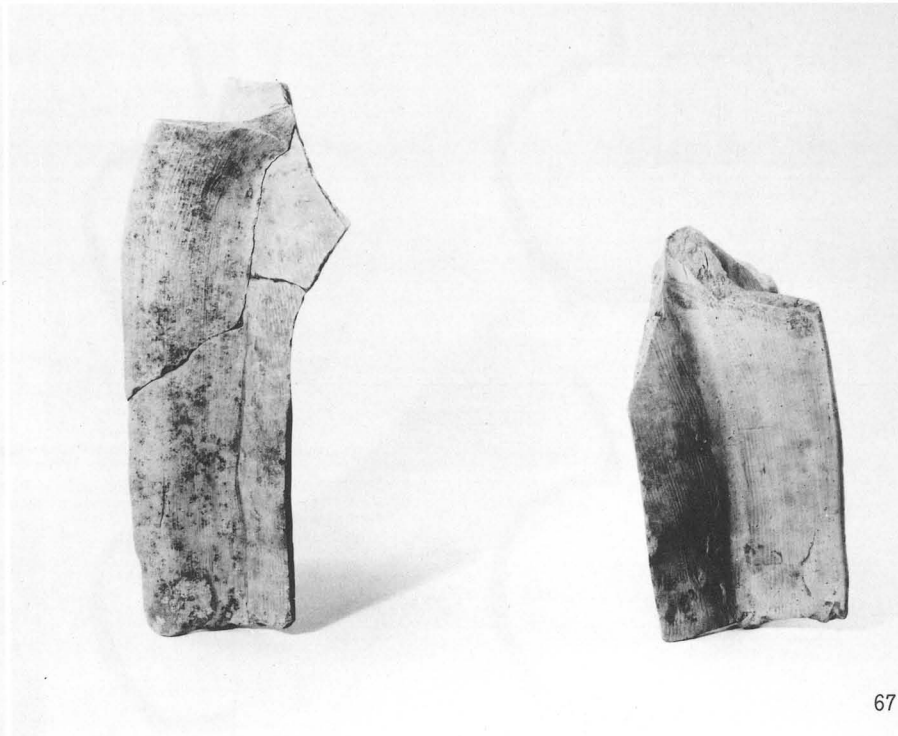
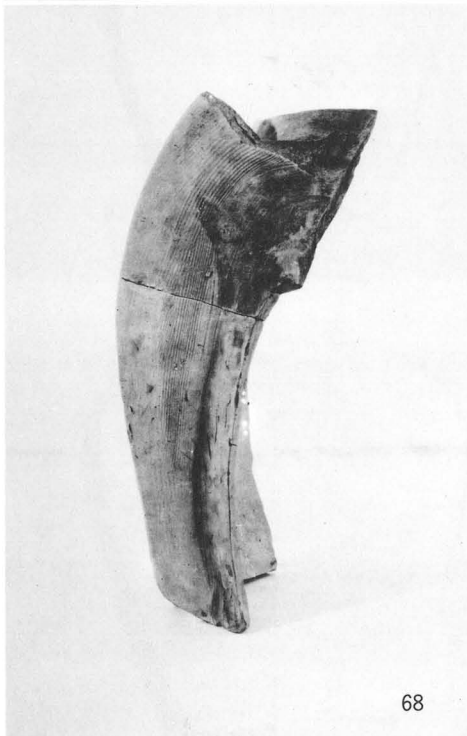
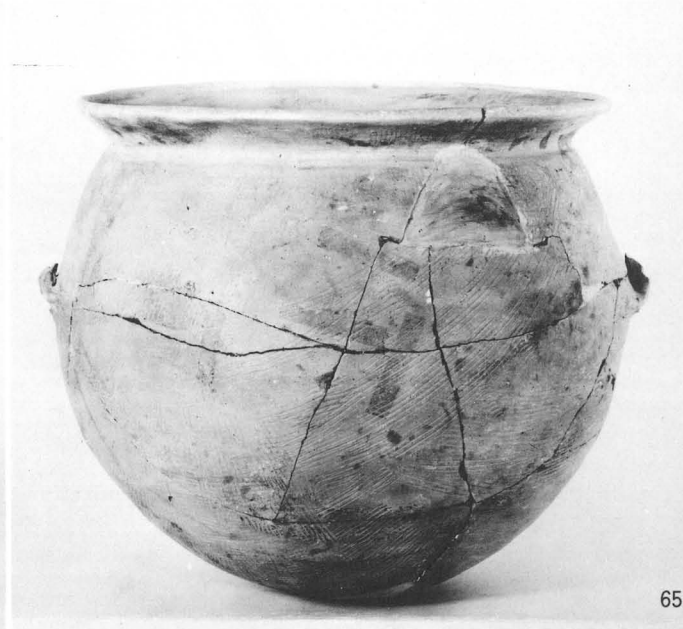
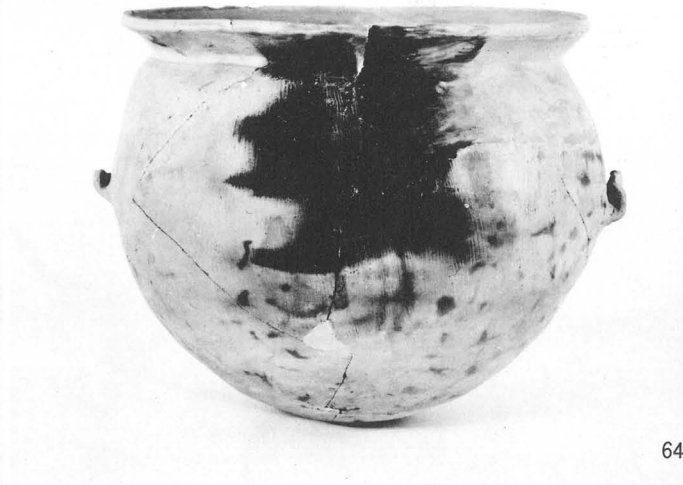


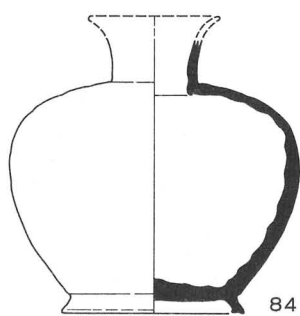
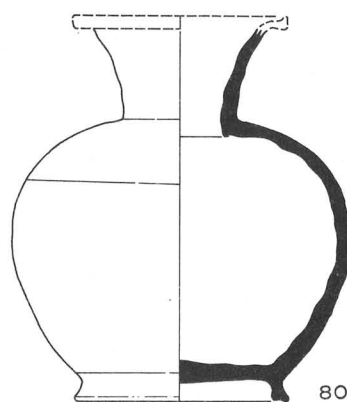
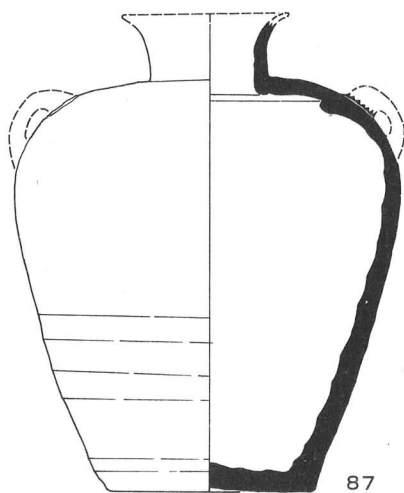
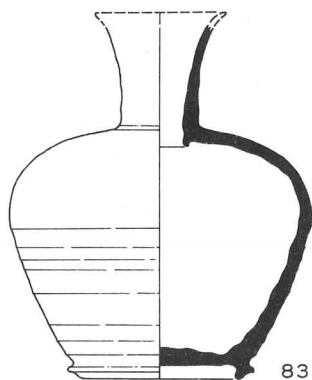
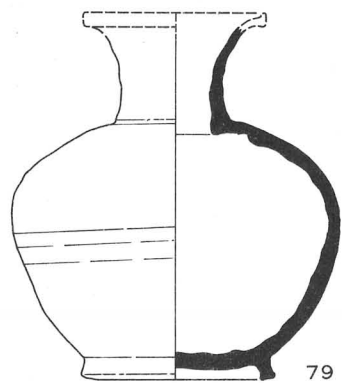
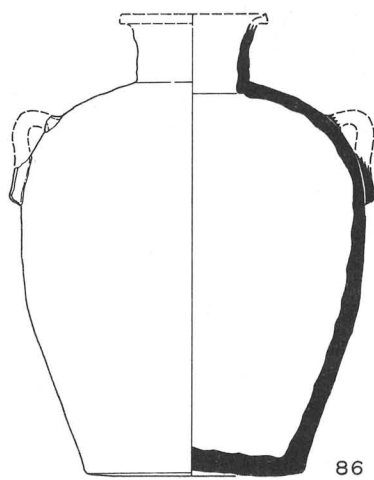
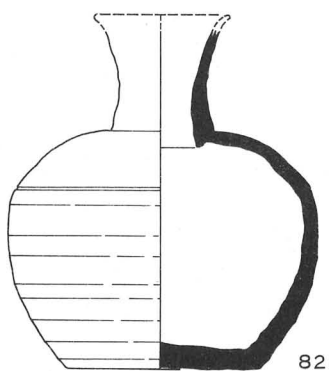
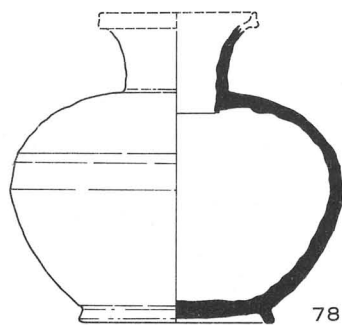
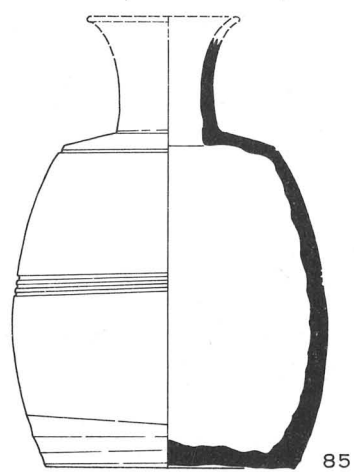
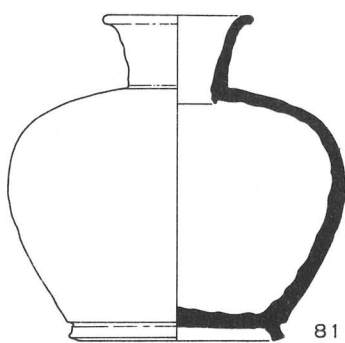
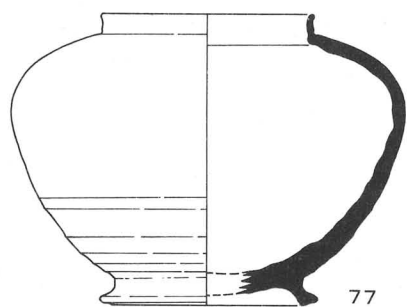
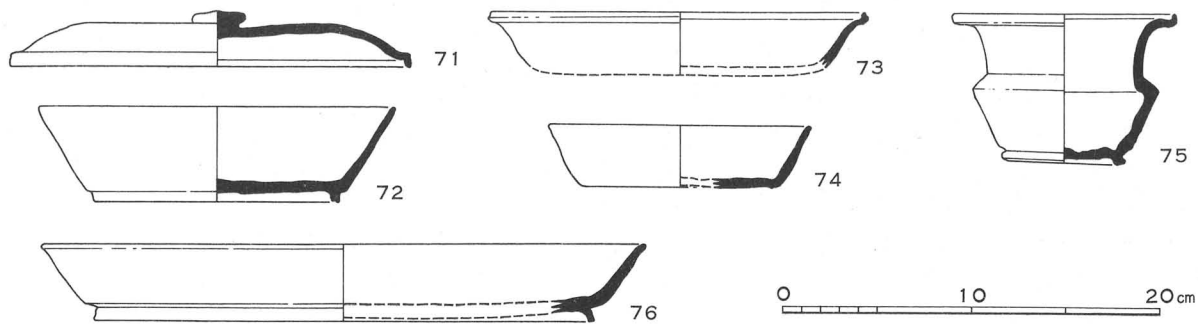
3

63·66 井戸1出土土器
1 井戸2出土墨書土器

64·65 井戸2出土土器
1·3 井戸2出土土馬

2 土塚6出土土馬





78・86 井戸1出土土器 71~77・79~85・87 井戸2出土土器



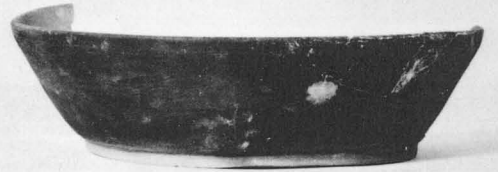
73



71



75



72



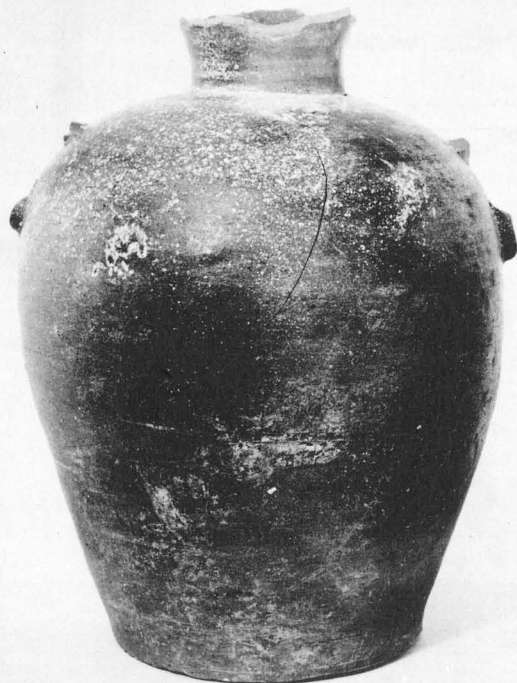
85



81



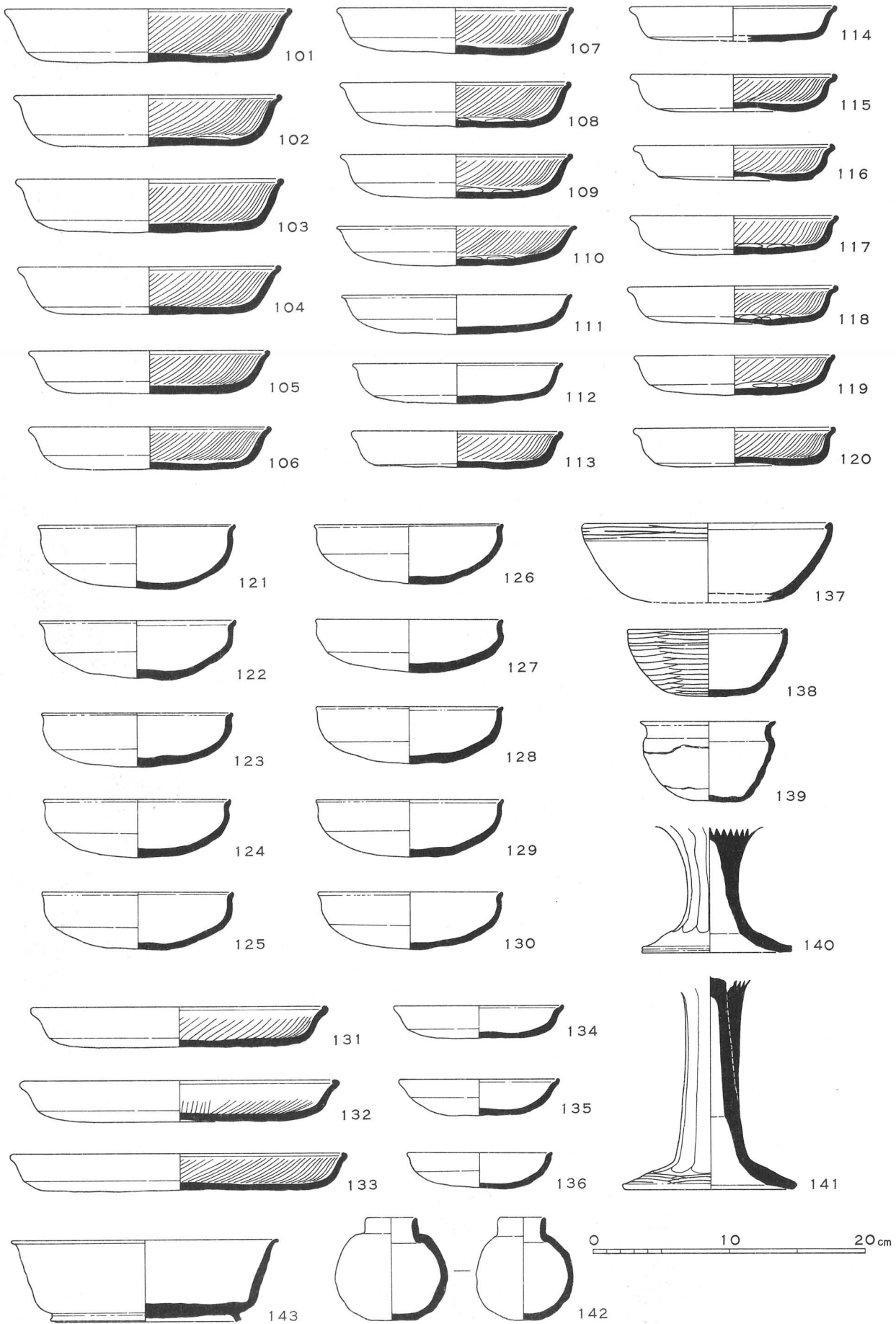
79



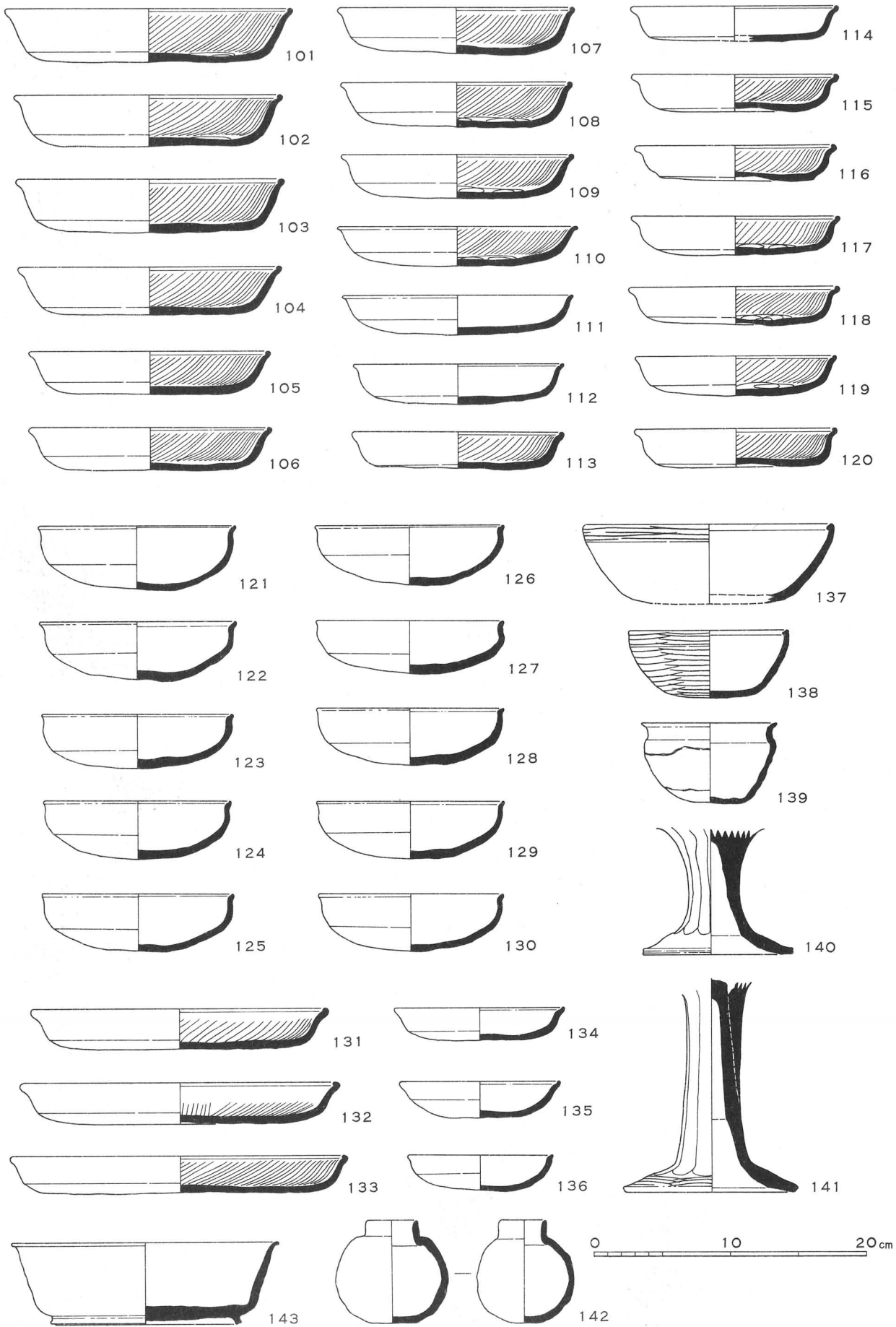
86



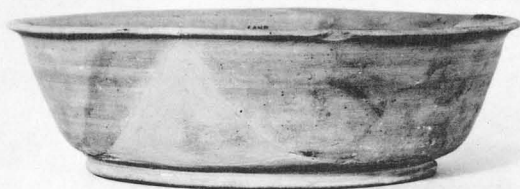
84



101~141·143 土城 I 出土土器 142 土城 5 出土土器



101~141·143 土城 I 出土土器 142 土城 5 出土土器



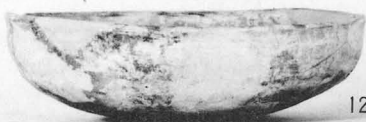
142



102



142



124



112



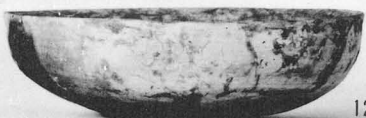
123



113



139



128



118



135



136



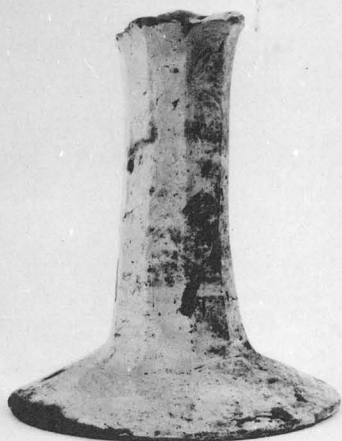
116



133



138



141



1



1