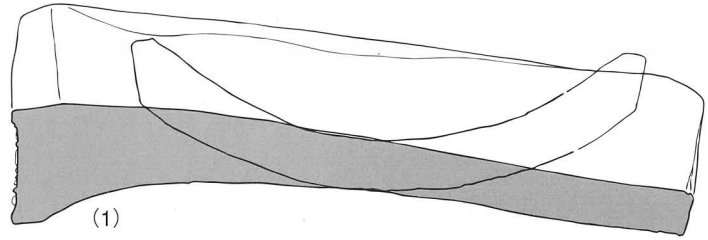


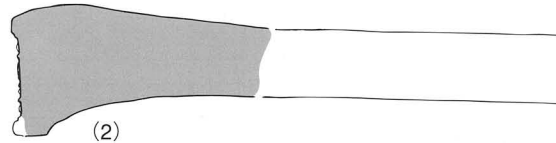
6691 A(1)



(1)

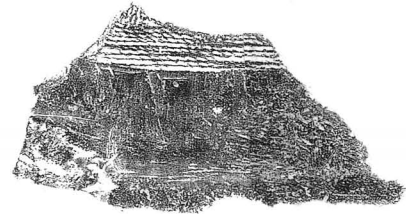


6691 A(1)狭端面 (1:3)

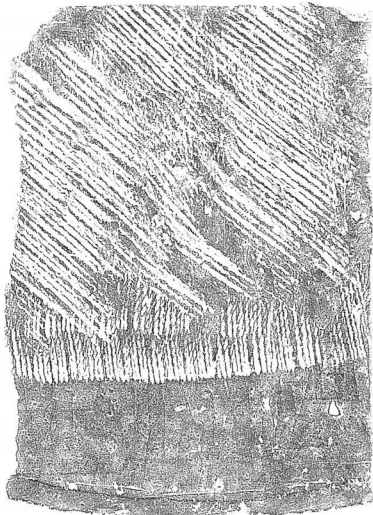


(2)

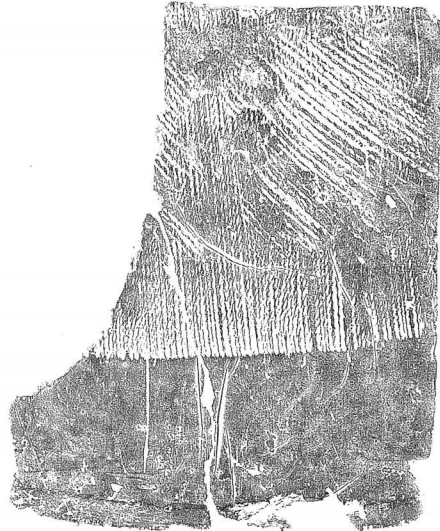
6721 C(1)狭端面 (1:3)



6691 A(2) (1:5)



6691 A(1)凸面 (1:5)



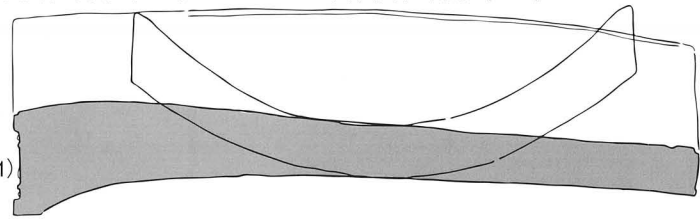
6721 C(1)凸面(B手法) (1:5)



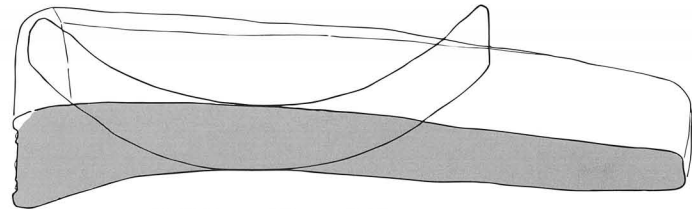
6721 C(2)凸面(A手法) (1:5)



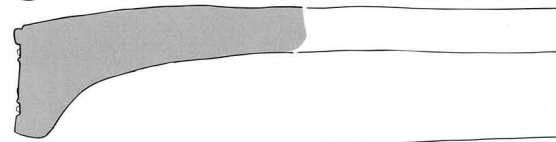
6721 C(1)



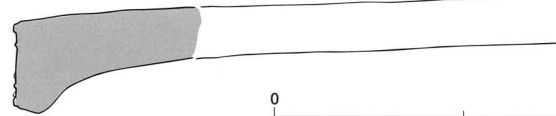
6721 A



6721 Db

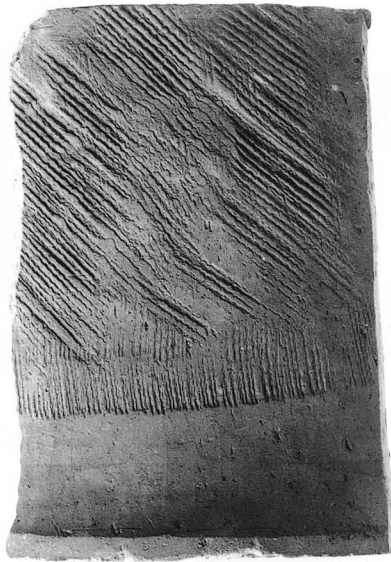


6721 E



0 20cm

型式・種	最大幅	厚さ	内区		上外区		下外区		脇区		全長	顎形態	点数
			厚	文様	厚	文様	厚	文様	幅	文様			
6691 A	250	39	23	KK	7	S21	8	S21	7	S 3	361	曲Ⅱ	39
6721 A	256	33	20	KK	6	S26	6	S27	3	-		曲Ⅱ	5
C		33	22	KK	6	S26	6	S32	4	-	361	曲Ⅱ	48
Db		35	23	KK	6	S26	7	S32	5	-		曲Ⅱ	1
E		32	20	KK	6	S31	6	S35	2	-		曲Ⅱ	1



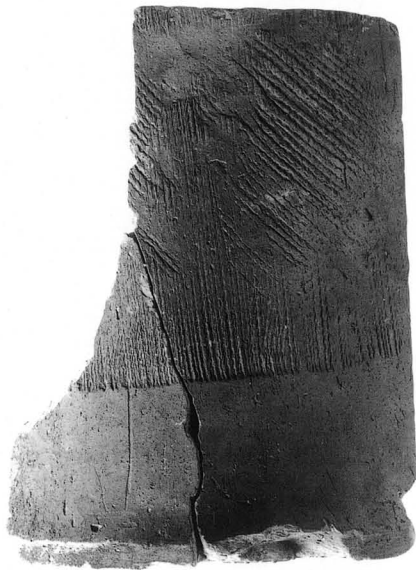
6691A (1) 凸面 (1 : 5)



6721A



6691A (1)



6721C (1) 凸面 (1 : 5)



(2)



6721C (1)



6691A (2)
凸面



6691A (1) 狭端面



6721C (1) 狭端面

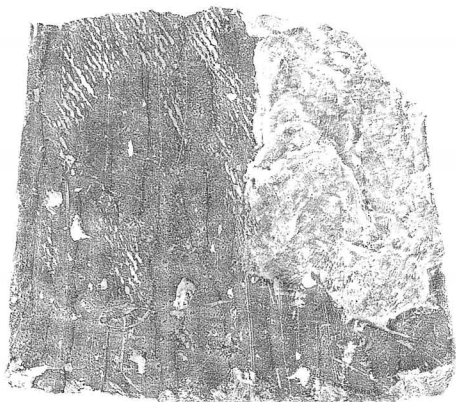
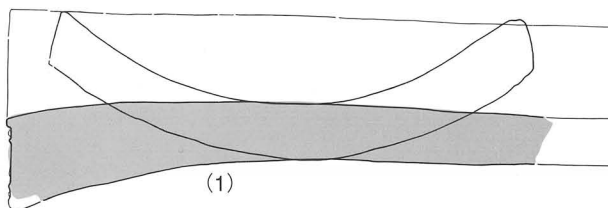
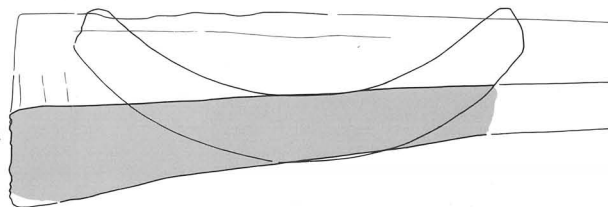


6721E

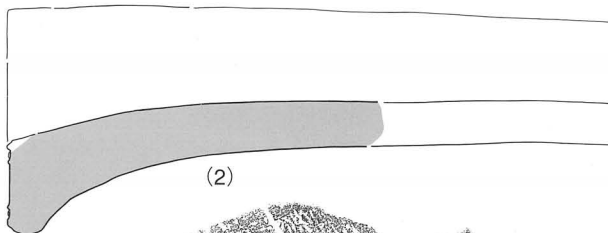


6721Db

瓦当面 1 : 3



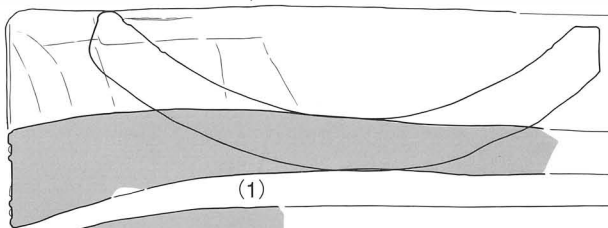
6721 Ga 凸面 (1 : 5)



6721 Ha(1)凸面 (1 : 5)



6721 Gb(1)凸面 (1 : 5)



6721 Ha(1)



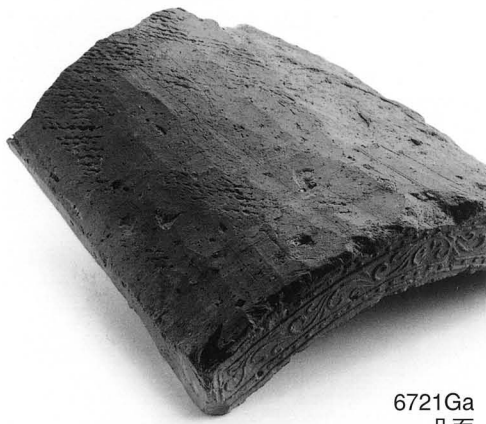
6721 Hb



6721 Hc



型式・種	最大幅	厚さ	内区		上外区		下外区		脇区		全長	顎形態	点数
			厚	文様	厚	文様	厚	文様	幅	文様			
6721 Ga	261	44	23	KK	5	S33	6	S35	5	-		直	59
6721 Gb	290	35	23	KK	5	S34	6	S35	3	-		直・曲Ⅱ	56
Ha		41	25	KK	8	S33	8	S34	7	S3		直・曲Ⅰ	6
Hb		40	24	KK	7	S33	8	S34	6	S4		曲Ⅰ	1
Hc	291	37	22	KK	7	S33	7	S34	7	S4		曲Ⅱ	4



6721Ga
凸面



6721Ga



6721Gb (1)
凸面



6721Gb (1)



6721Ha (1)



6721Ha (1)
凸面



6721Hb



側面



6721Hc



6721Hc
凸面



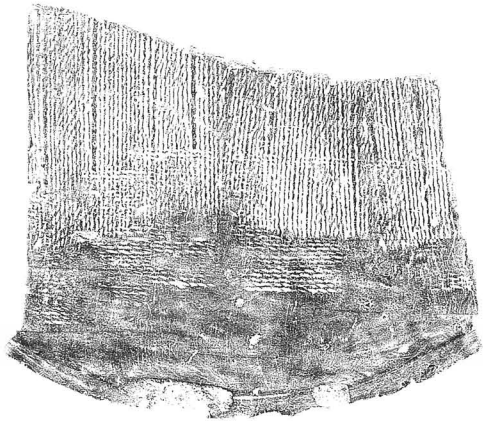
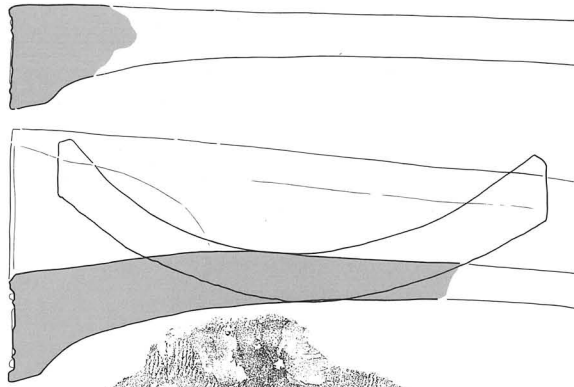
6721Gb (2)
凸面



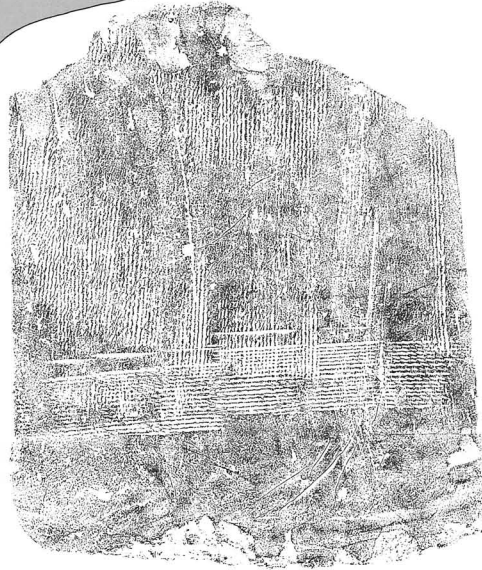
6726 B



6726 E



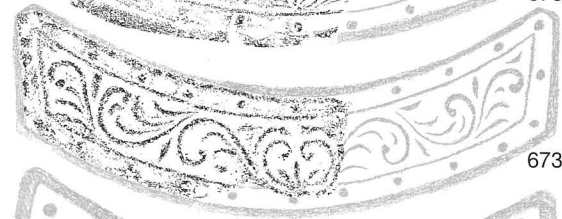
6726 E 凸面
(1:5)



6732 C 凸面
(1:5)



6732 C



6732 L



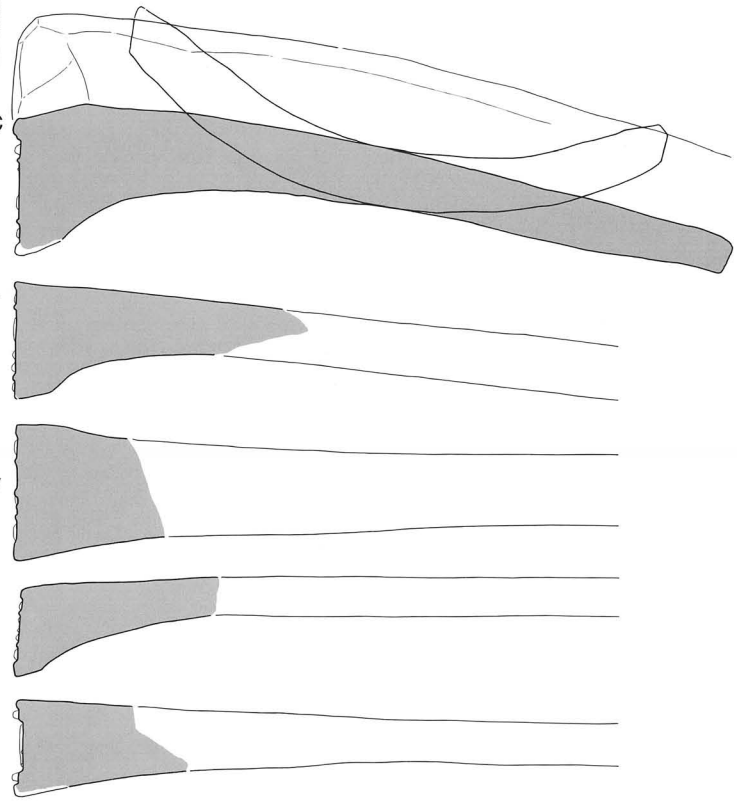
6732 V



6755 A



6759 A



0 20cm

型式・種	最大幅	厚さ	内区		上外区		下外区		脇区		全長	頸形態	点数
			厚	文様	厚	文様	厚	文様	幅	文様			
6726 B		46	31	KK	8	S 7	8	S 7	7	S3		曲Ⅱ	2
E	281	43	30	KK	5	S17	7	S17	7	S2		曲Ⅱ	19
6732 C	301	49	29	KK	10	S 9	10	S 9	10	S3	384	曲Ⅱ	7
L		55	37	KK	9	S10	9	S 9	8	S3		曲Ⅱ	3
V		53	28	KK	12	S 7	12	S 7	14	S3		直	5
6755 A		33	18	KK	6	S13	8	S13	9	S2		曲Ⅱ	1
6759 A		39	25	KK	7	S	6	S	-	-		直	1



6732L



6732C



6732V



6726E (1)



6759A



6732C
凸面



6755A



6726B



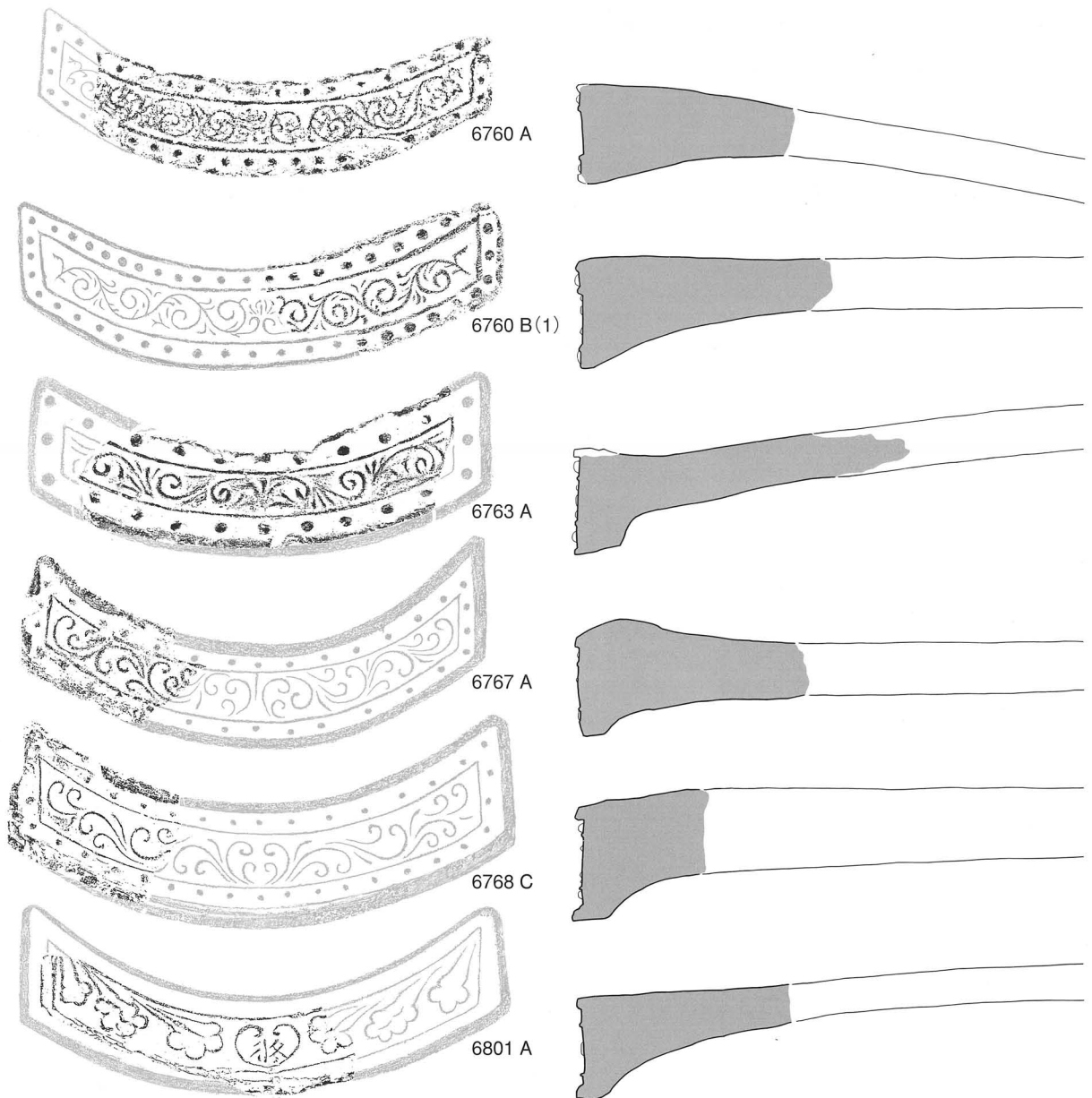
6726E (2)
凸面



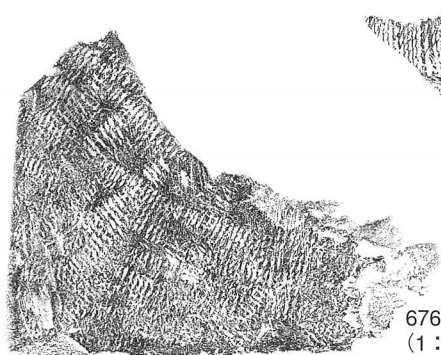
6726E (1)
凸面



6726E (3)
凸面



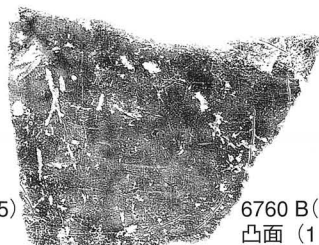
SD18120 出土軒平瓦
凸面 (左 1:5) 断面図(上)



6760 A 凸面
(1:5)



6760 B(1)
凸面 (1:5)



6760 B(2)
凸面 (1:5)

0 20cm

型式・種	最大幅	厚さ	内区		上外区		下外区		脇区		全長	顎形態	点数
			厚	文様	厚	文様	厚	文様	幅	文様			
6760 A		53	26	KK	11	S 17	10	S 19	10	S 4		直曲 I	10
B		57	27	KK	11	S 20	12	S 18	10	S ^{L5} _{R4}		直	12
6763 A		52	26	KK	13	S 9	12	S 9	14	S 3		曲 II	1
6767 A		44	28	KK	8	S 13	8	S 12	7	S 4		曲 II	1
6768 C		53	32	KK	11	S 14	10	S 15	10	S 4		曲 II	1
6801 A		47	33	U	8	-	5	-	6	-		曲 II	5



6767A



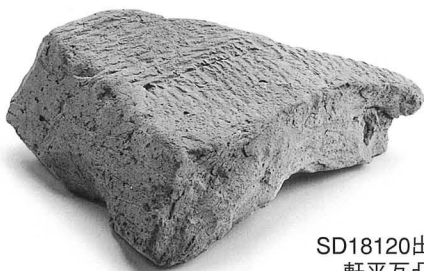
6760A



6768C



6760B (1)



SD18120出土
軒平瓦凸面



6763A



6760A
凸面



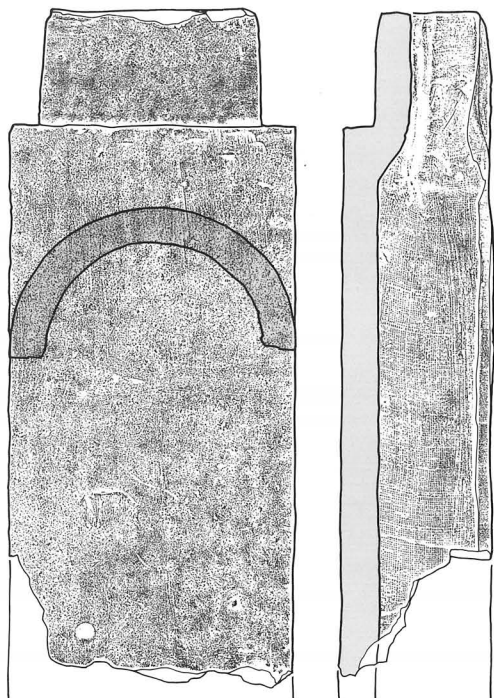
6801A



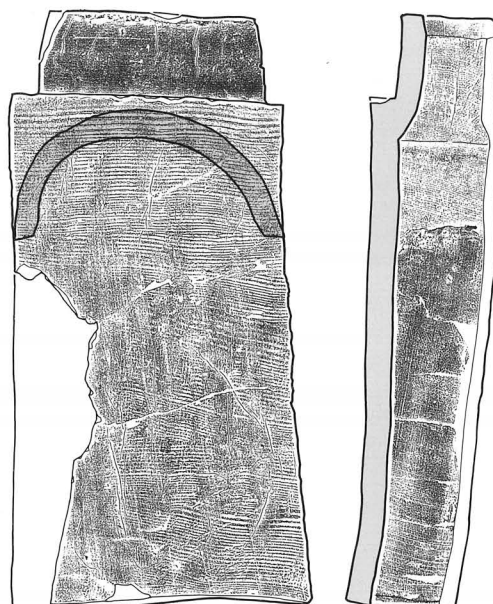
6760B (1)
凸面



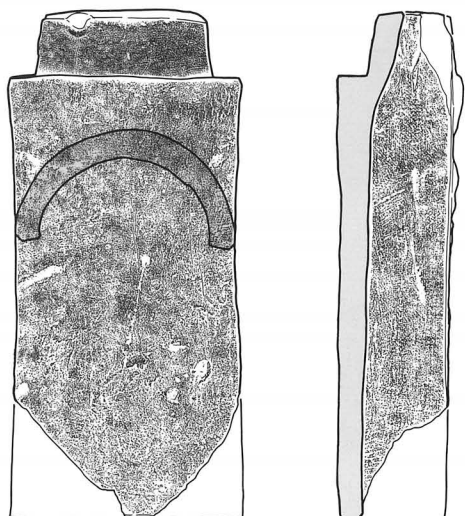
6801A
凸面



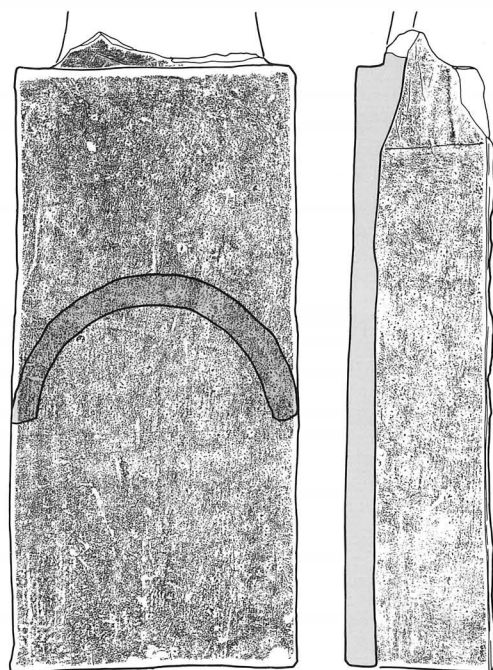
1. Ia



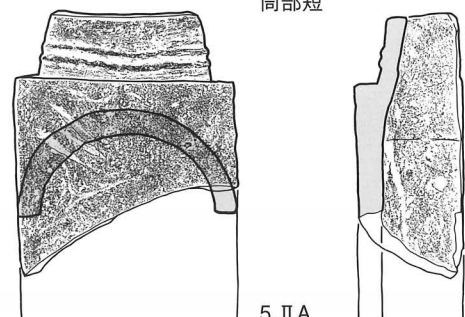
2. Ib



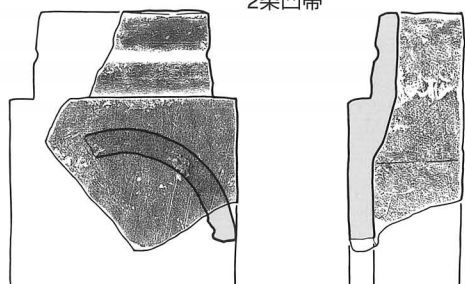
4. II A
筒部短



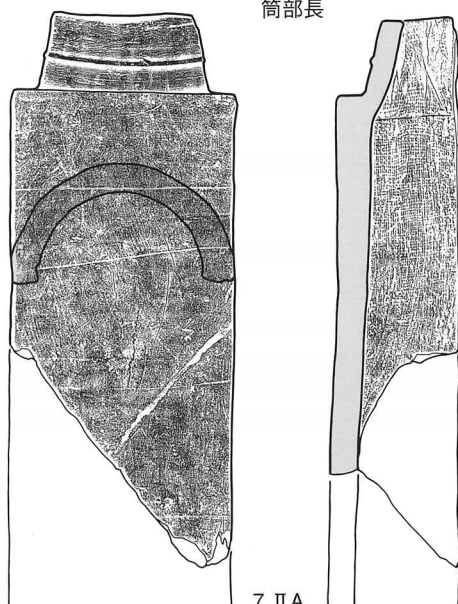
3. II A
筒部長



5. II A
玉縁部
2条凸帯

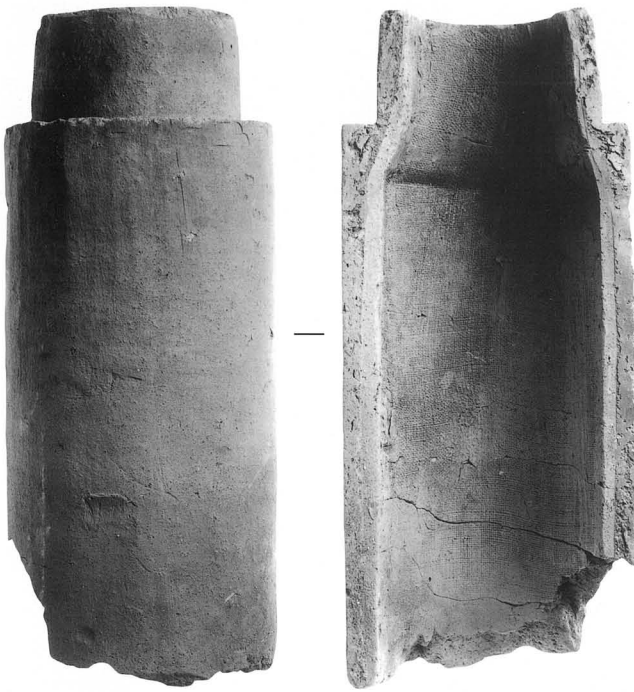


6. II A
玉縁部凹線

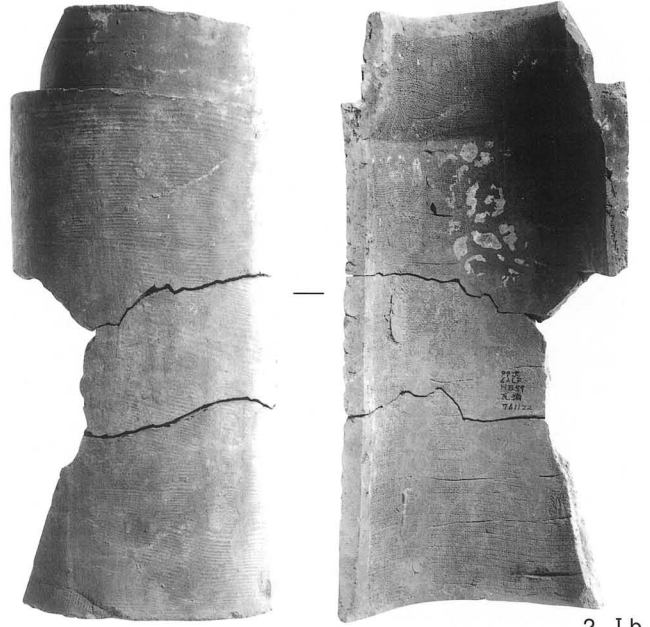


7. II A
玉縁部
1条凸帯

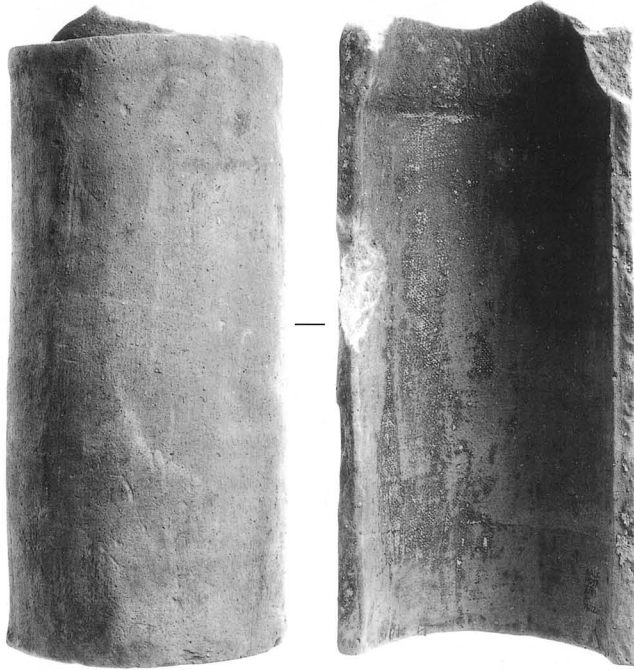




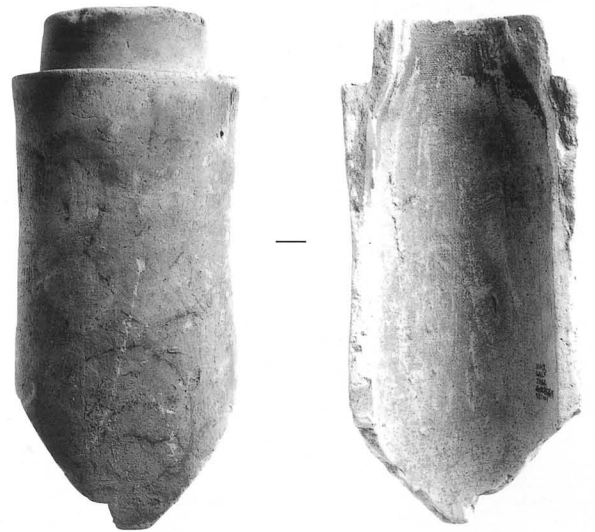
1 Ia



2 Ib



3 II A 筒部長



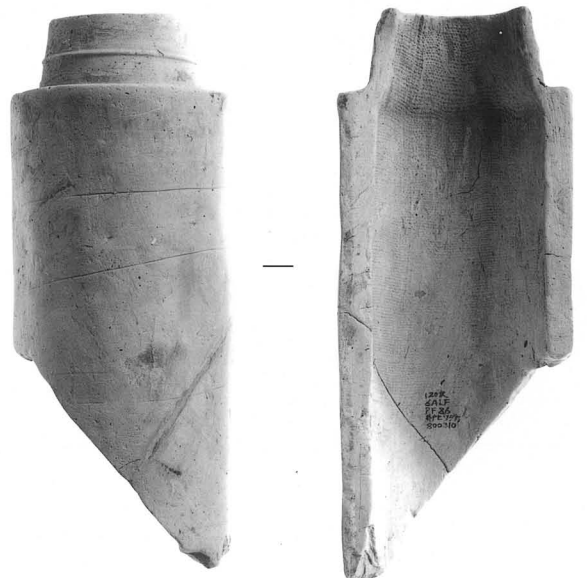
4 II A 筒部短



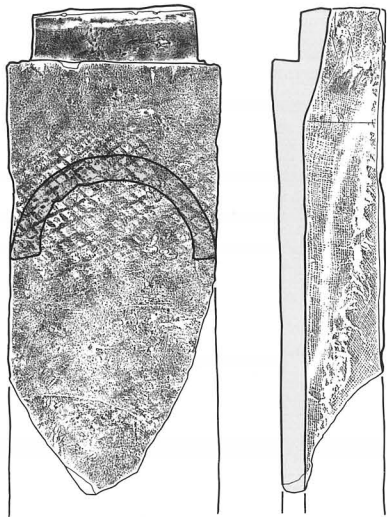
5 II A 玉縁部2条凸帯



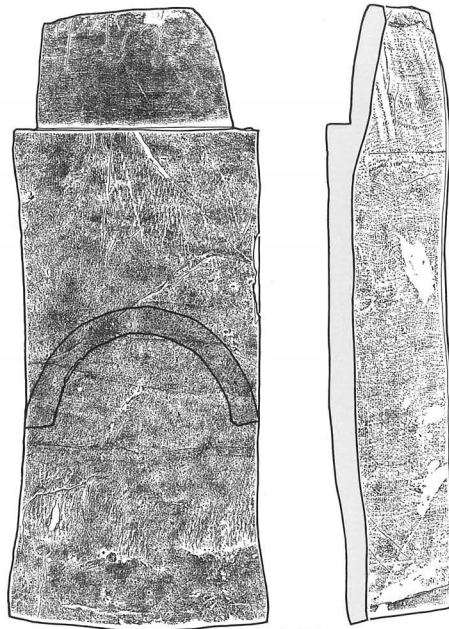
6 II A 玉縁部凹線



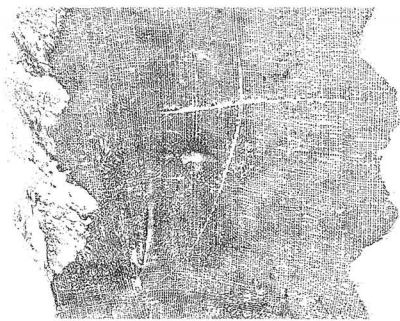
7 II A 玉縁部1条凸帯



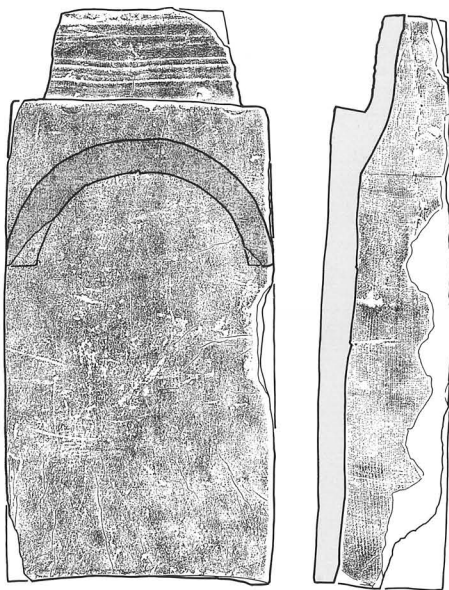
8.IB



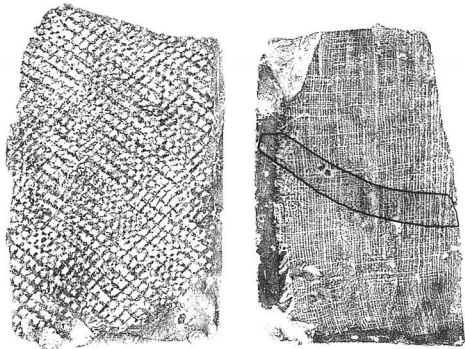
9.IA
玉緑部長



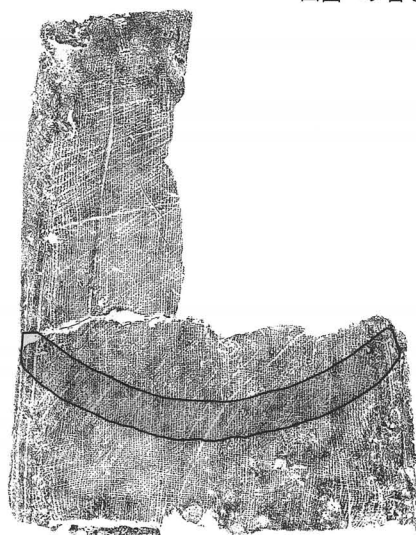
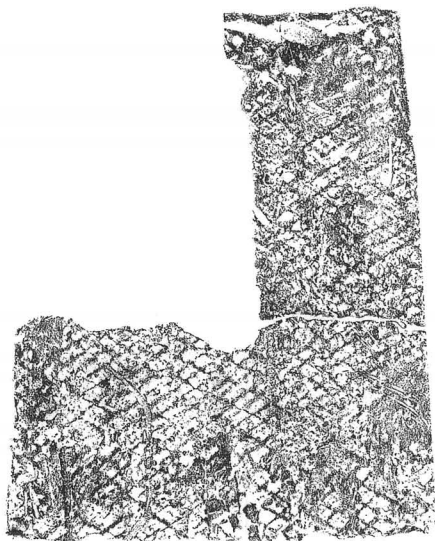
11.10のへら書き「ナ」拡大 (1:4)



10.IA
凹面へら書き「ナ」

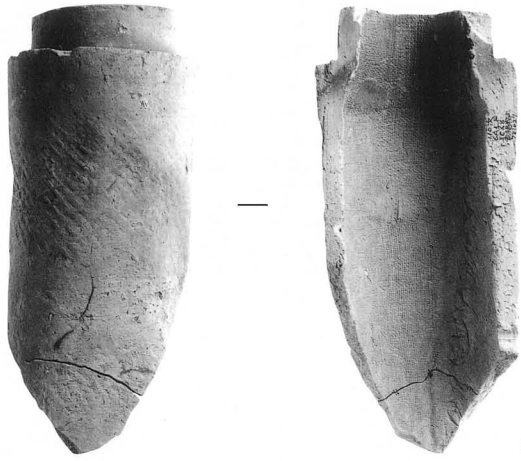


1.IIC密

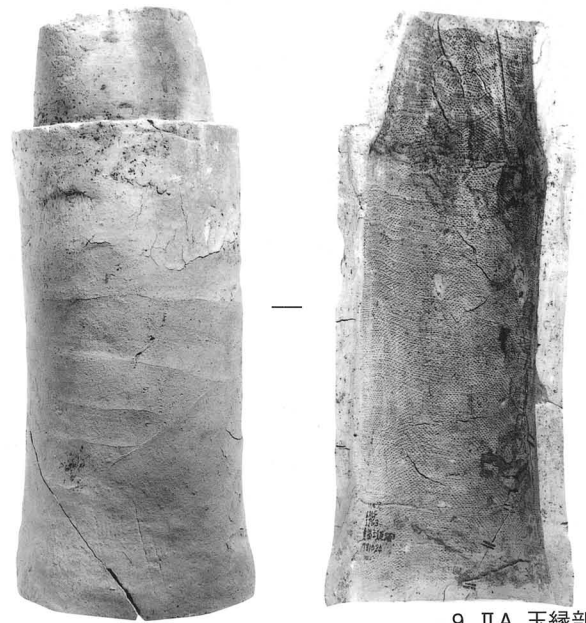


2.IIC粗

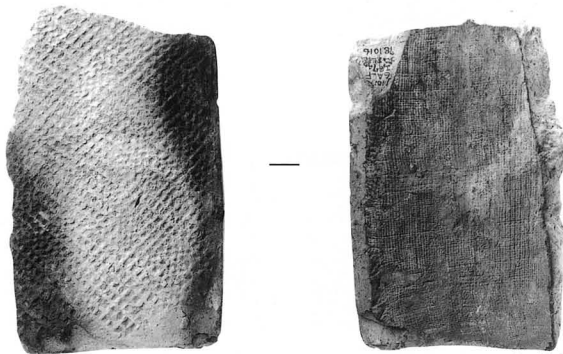




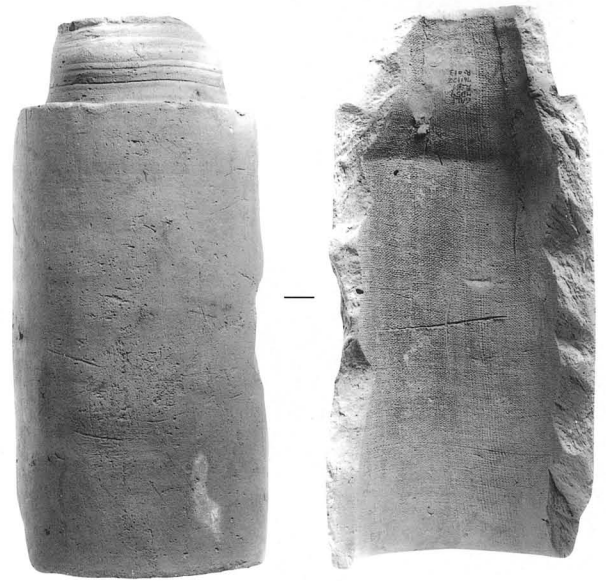
8 II B



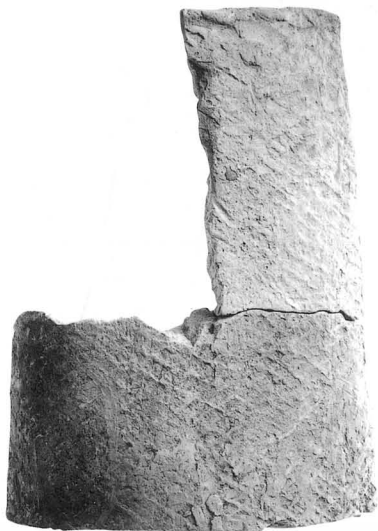
9 II A 玉縁部長



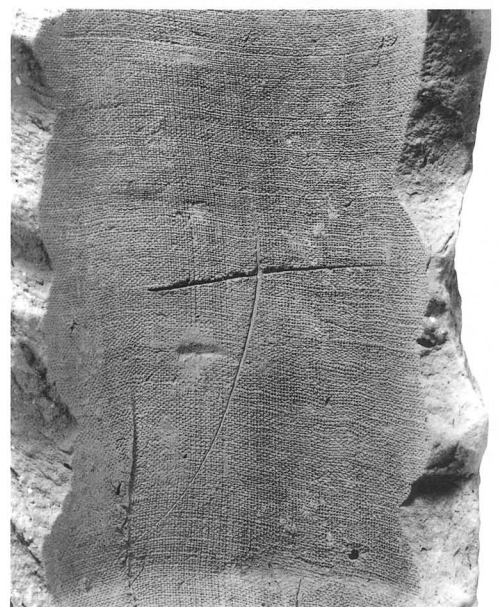
1 II C 密



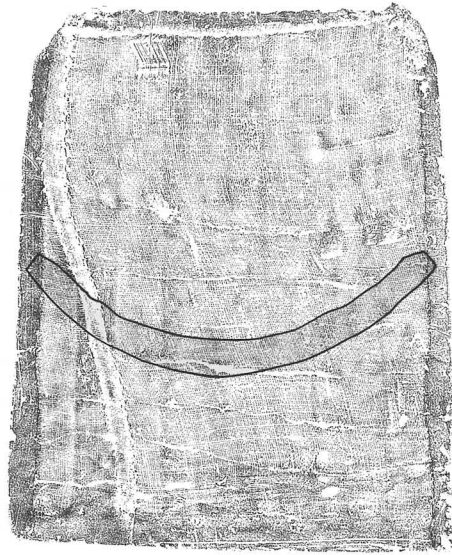
10 II A 凹面ヘラ書き「ナ」



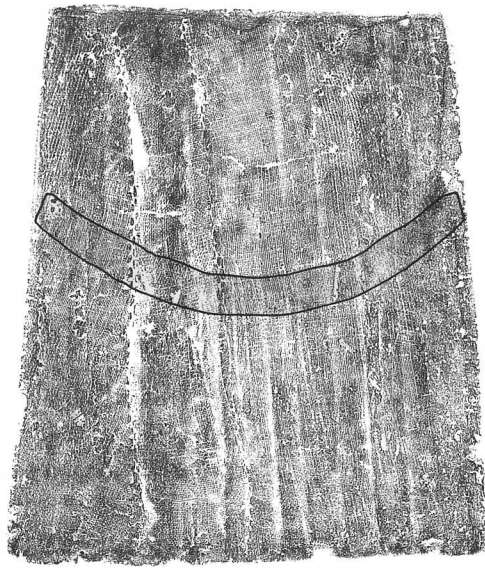
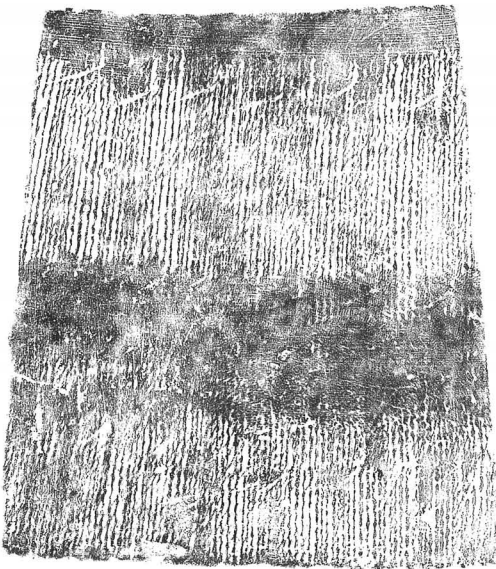
2 II C 粗



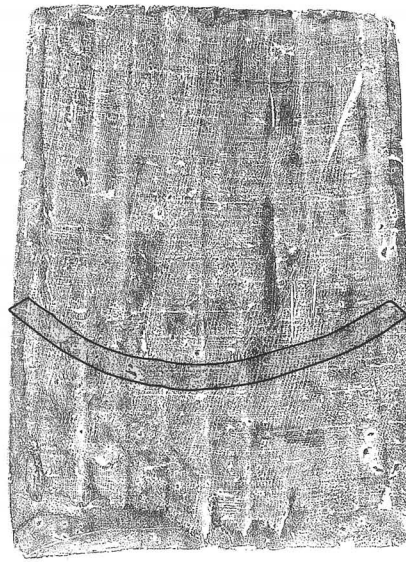
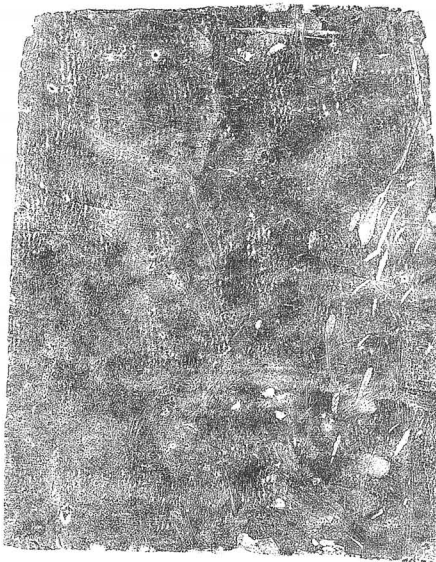
11 10の凹面ヘラ書き「ナ」(1:2)



3. I 1a



4. I 1b

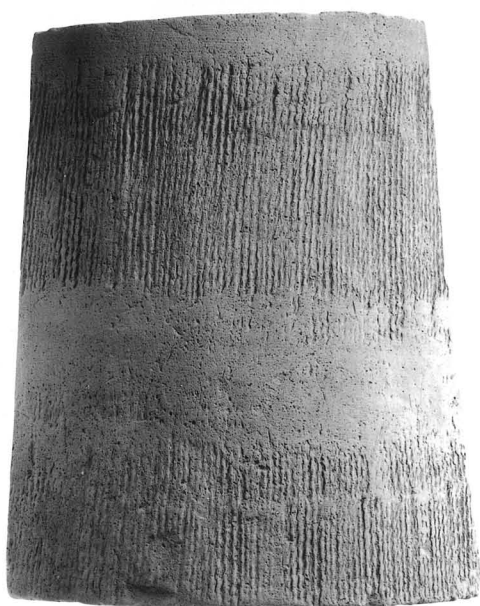


5. I 2a





3 I 1a



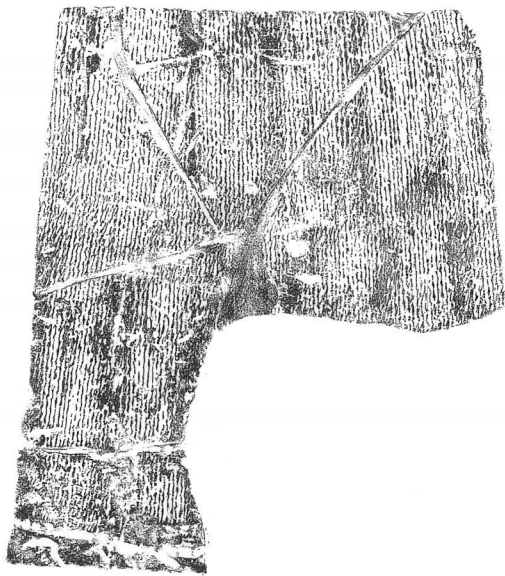
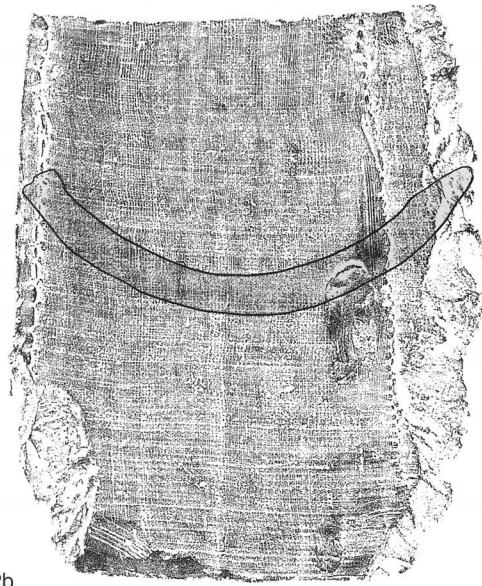
4 I 1b



5 I 2a



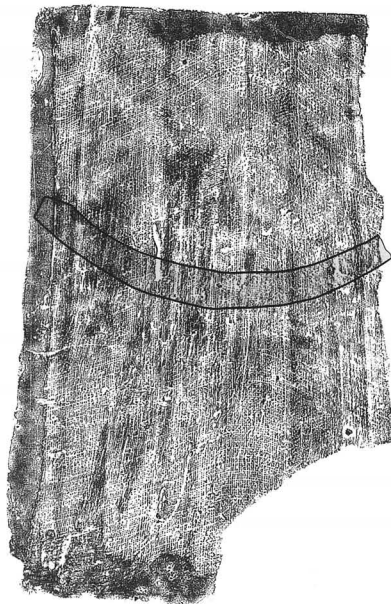
6. I 2b



7. I 2c



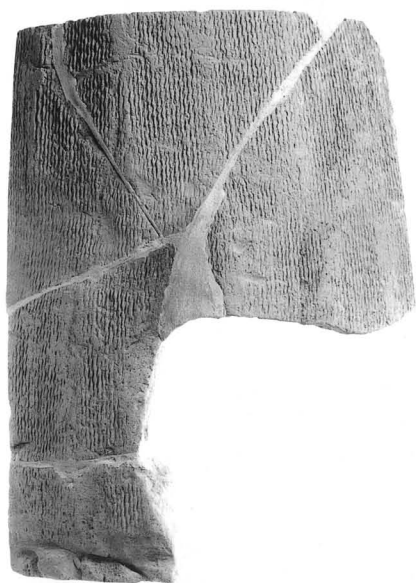
8. II A
凹面梓板痕



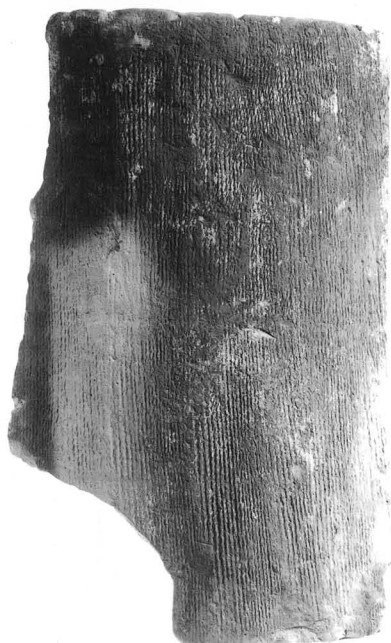
0 30cm



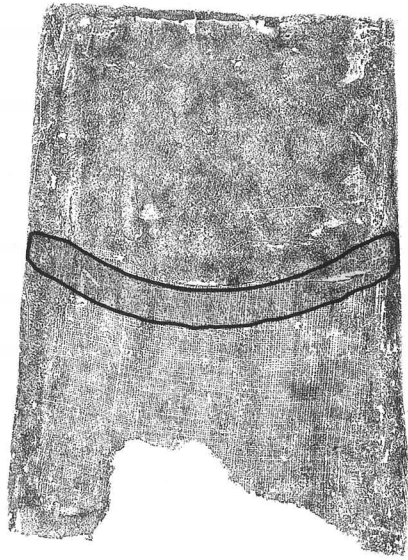
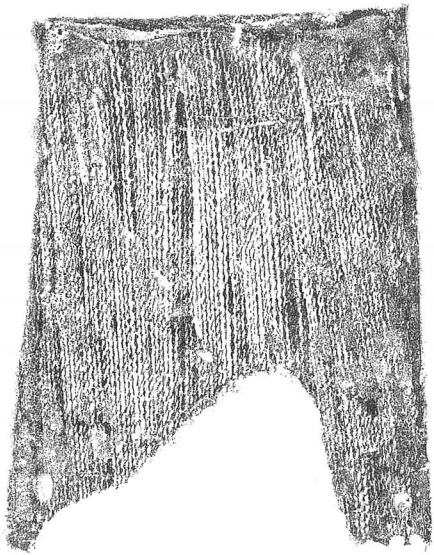
6 I 2b



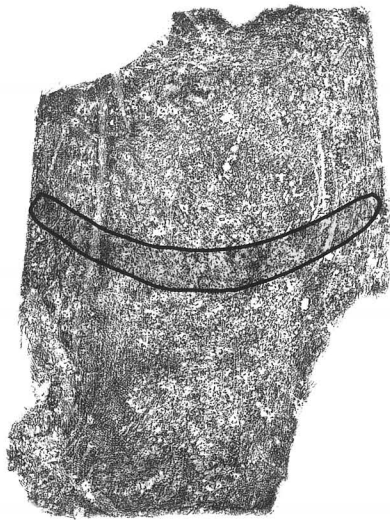
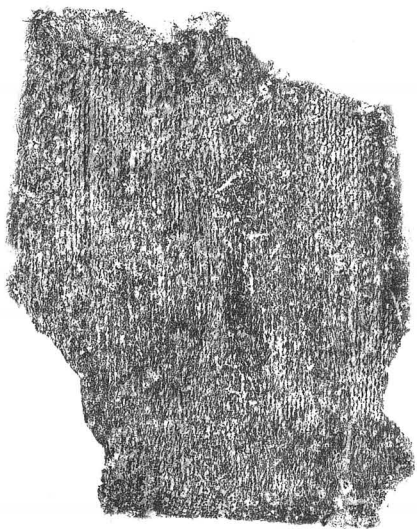
7 I 2c



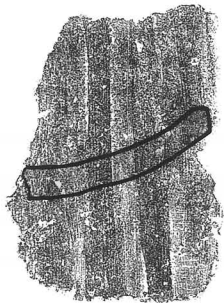
8 II A 凹面枰板痕



9.II A
凸面 離れ砂付着



10.II A

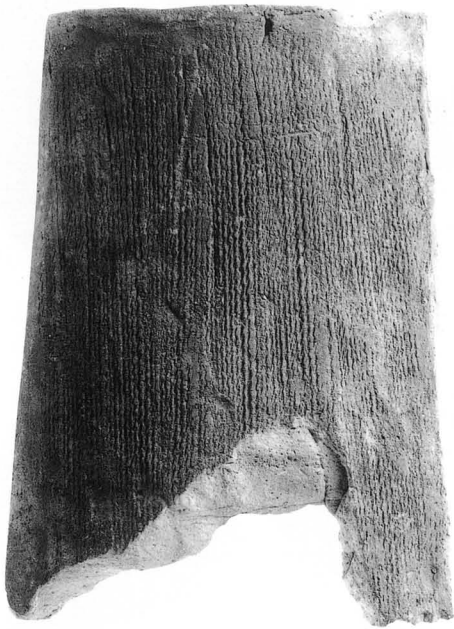


11.II D 密



12.II D 粗





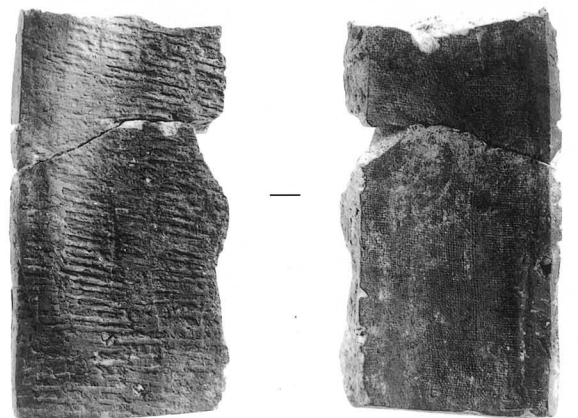
9 II A 凸面離れ砂付着



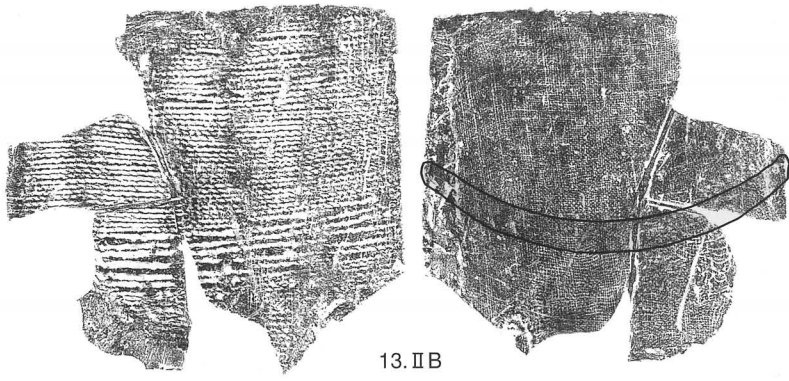
10 II A



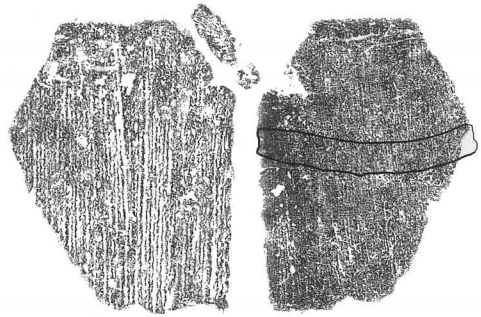
11 II D 密



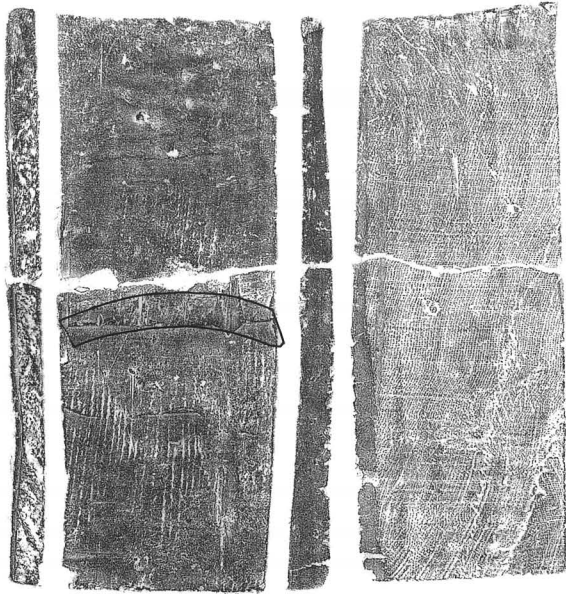
12 II D 粗



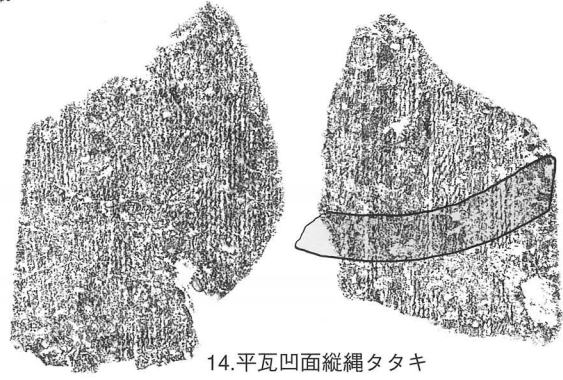
13.IIB



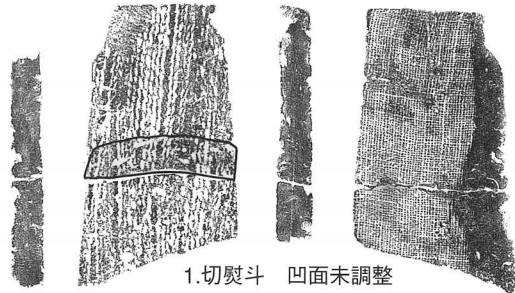
15.隅切平瓦



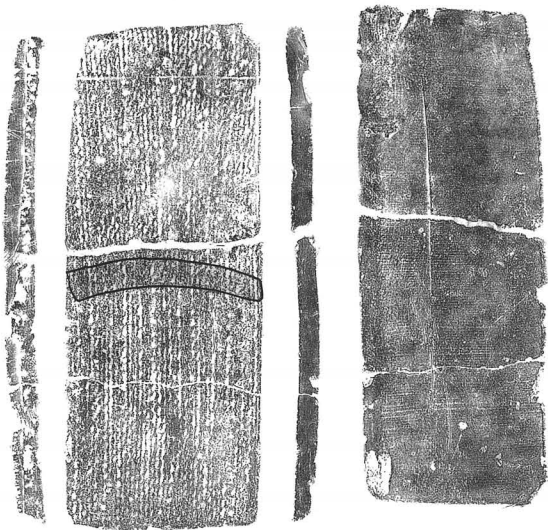
2.割熨斗 桶巻作り



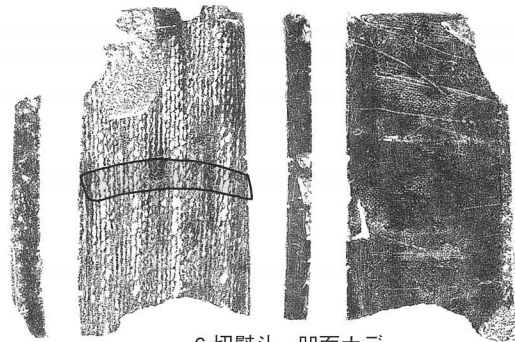
14.平瓦凹面縦縄タタキ



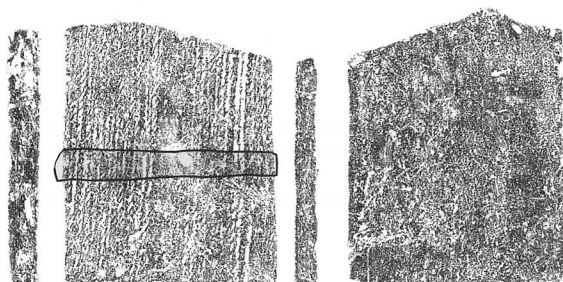
1.切熨斗 凹面未調整



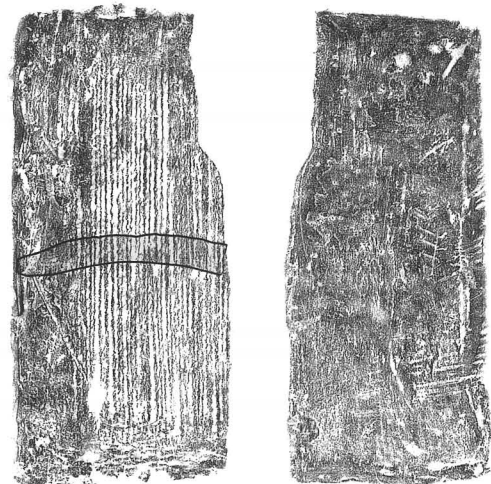
5.割熨斗 一枚作り



6.切熨斗 凹面ナデ



3.割熨斗 平坦なもの

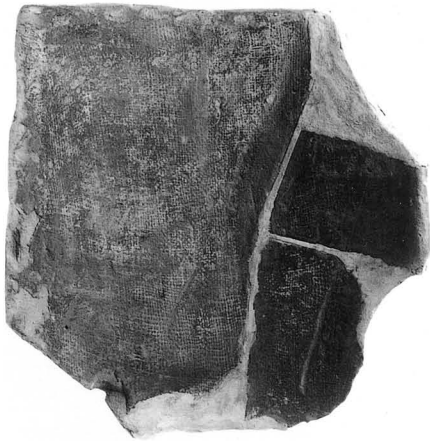


4.熨斗瓦か





14 平瓦 凹面縦縄タタキ



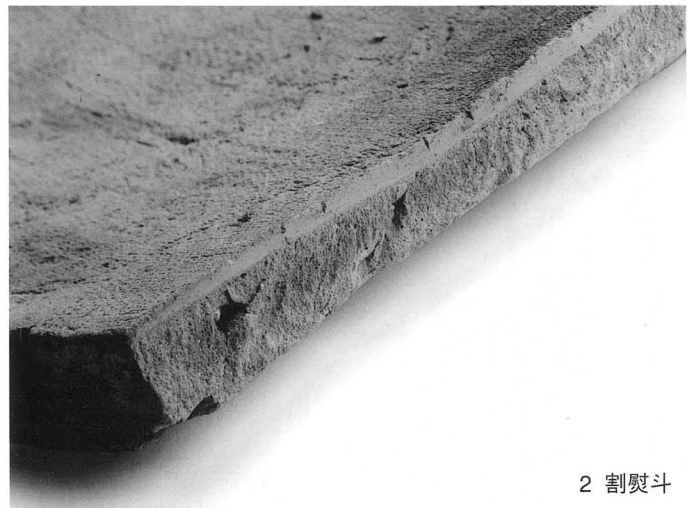
13 II B (1:5)



15 隅切平瓦



1 切熨斗



2 割熨斗



3 割熨斗 平坦なもの



4 熨斗瓦か