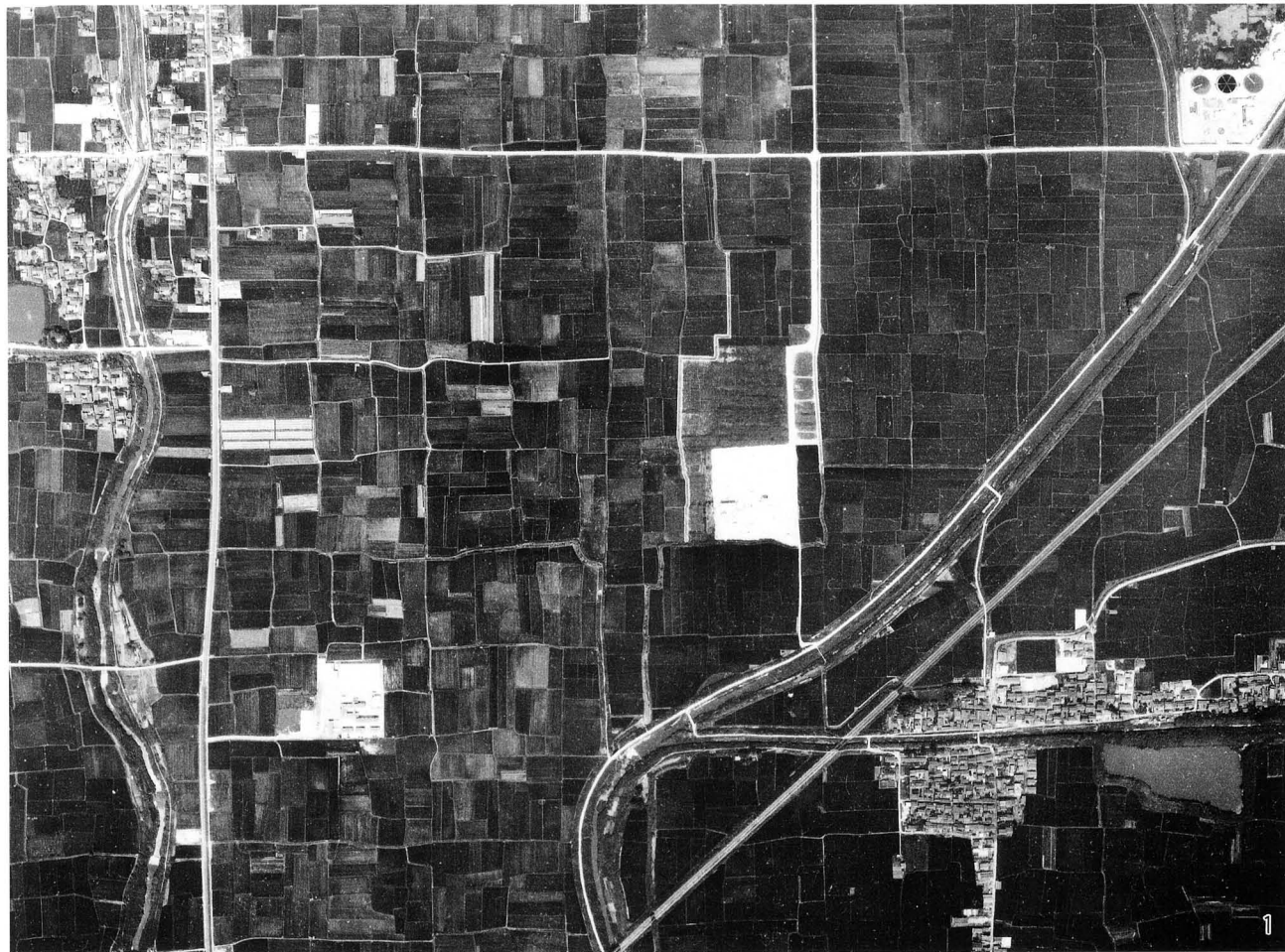
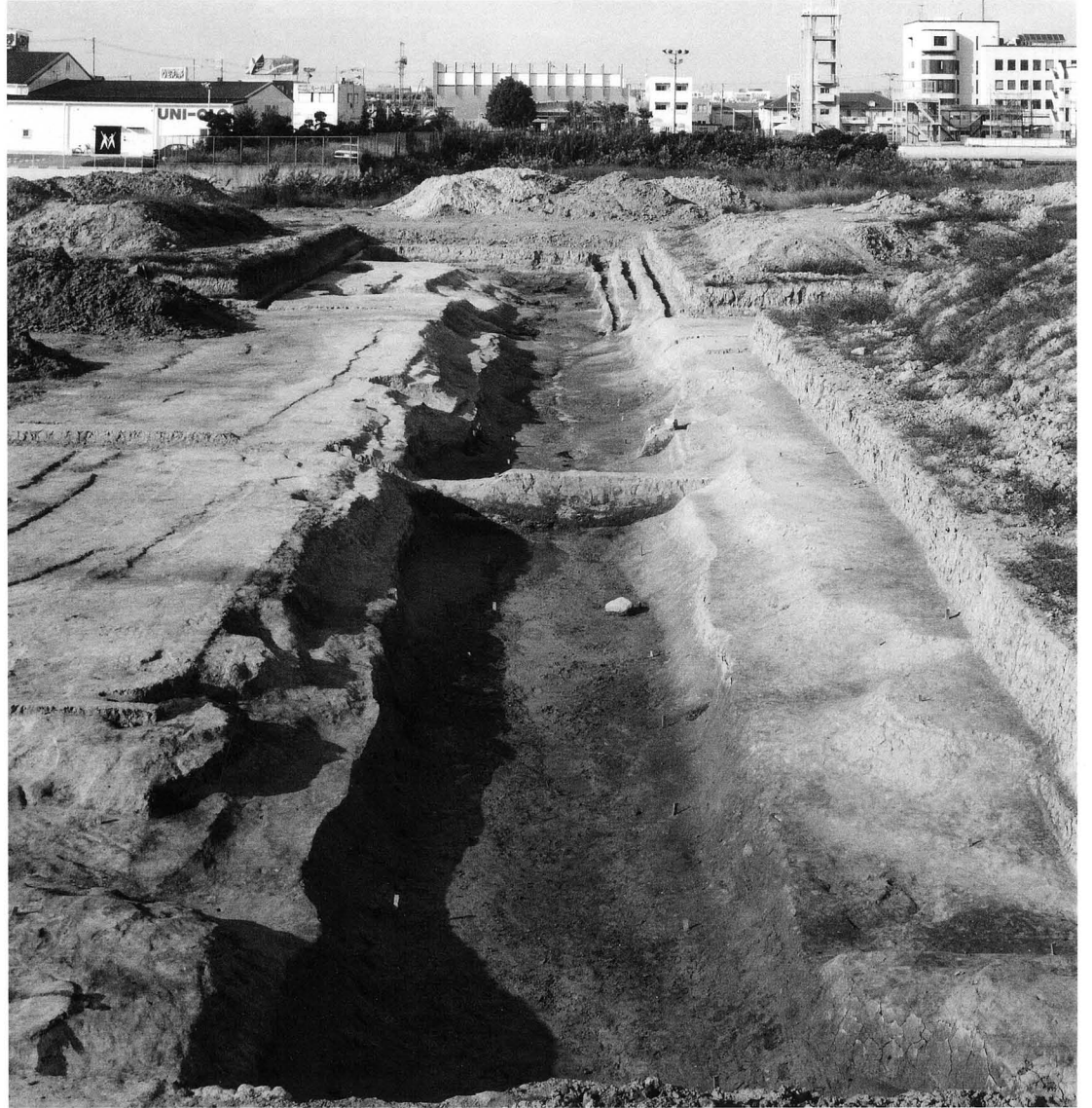


写 真



1 1964年撮影 2 1994年撮影

1 : 10,000



1 SD6400北半
南から



2 SD6400南半
南から

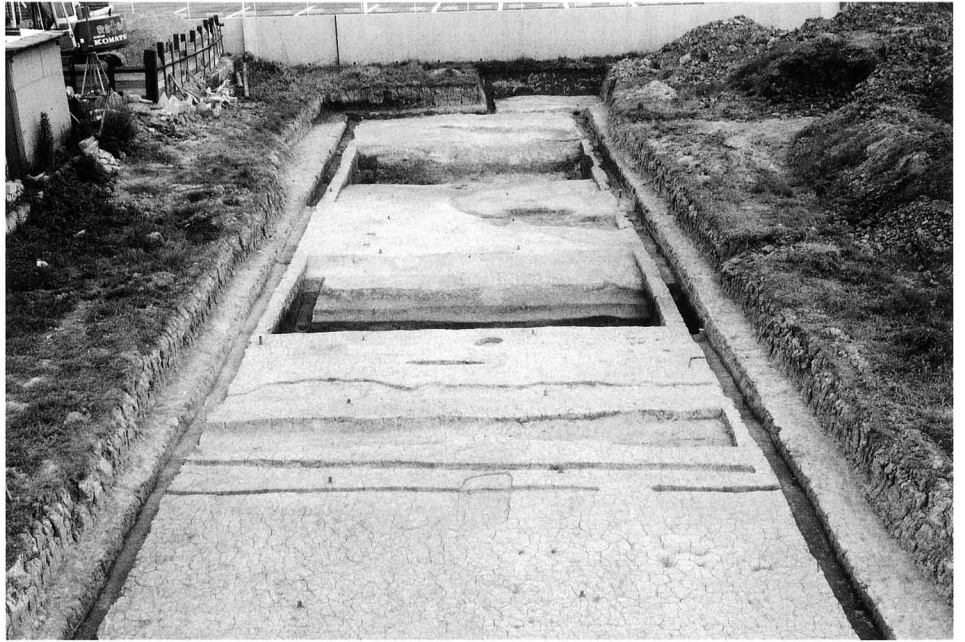


1 東一坊大路
SF6410
東側溝SD6411
西から



2 SD6411 南から

1 六条大路SF6450
北側溝SD6451
南側溝SD6449
雨落溝SD6446
南から



2 SD6449 東から



3 SD6451 東から

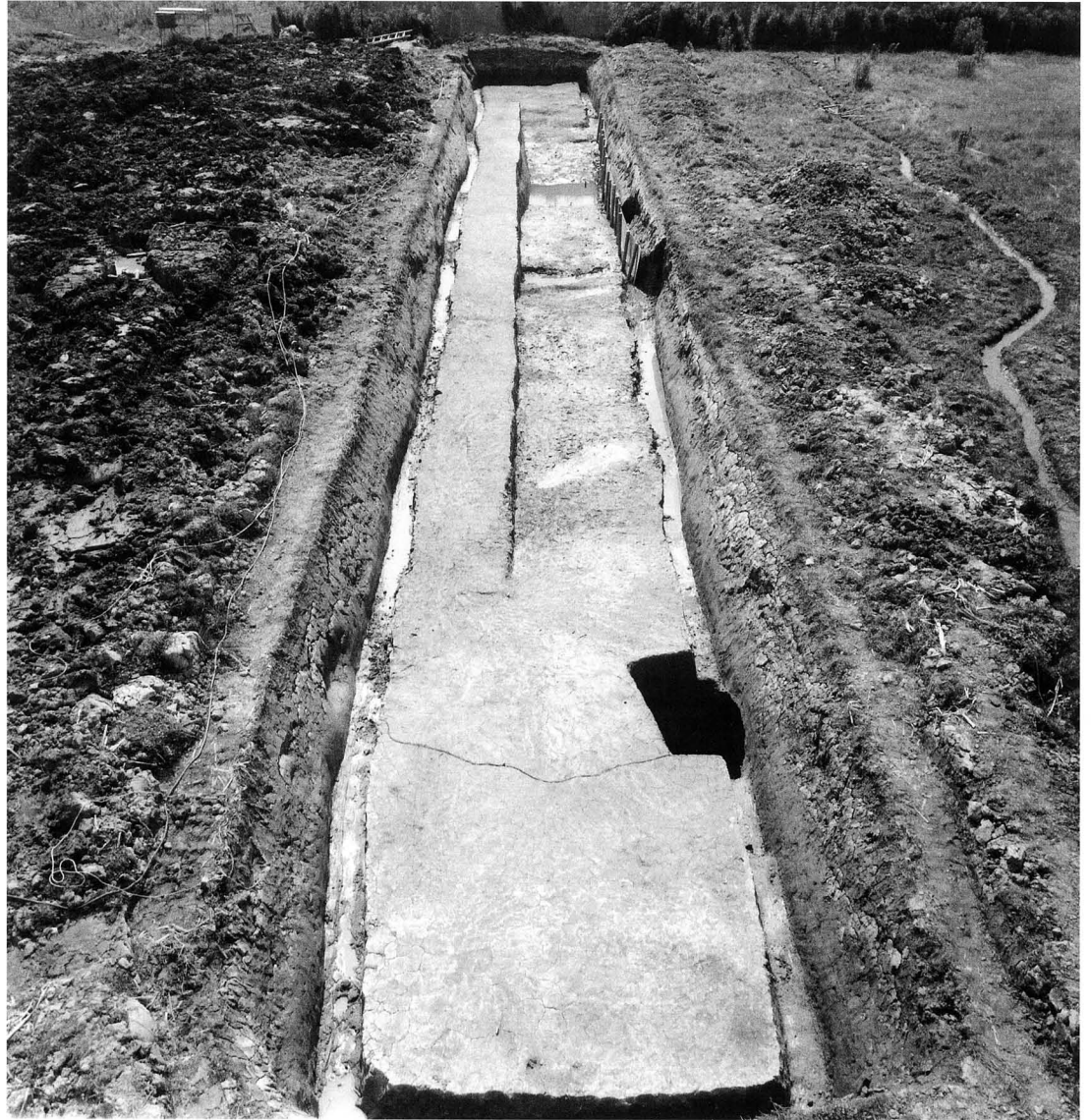




1 七条条間北小路
SF6470
南側溝SD6471
北側溝SD6472
西から



2 東一坊坊間東小路
SF6535
東側溝SD6534
七条条間北小路
北側溝SD6472
北から



1 調査区全景
東から



2 斜行溝
SD6403・6404
北から



1 調査区全景
北上空から



2 調査区全景
南から

1 SB6440・6441
北から



2 SB6435・6436
西から



3 SB6425・6426
西から





1 調査区全景
北上空から



2 調査区全景
南東から



3 SB6490・6495
北から



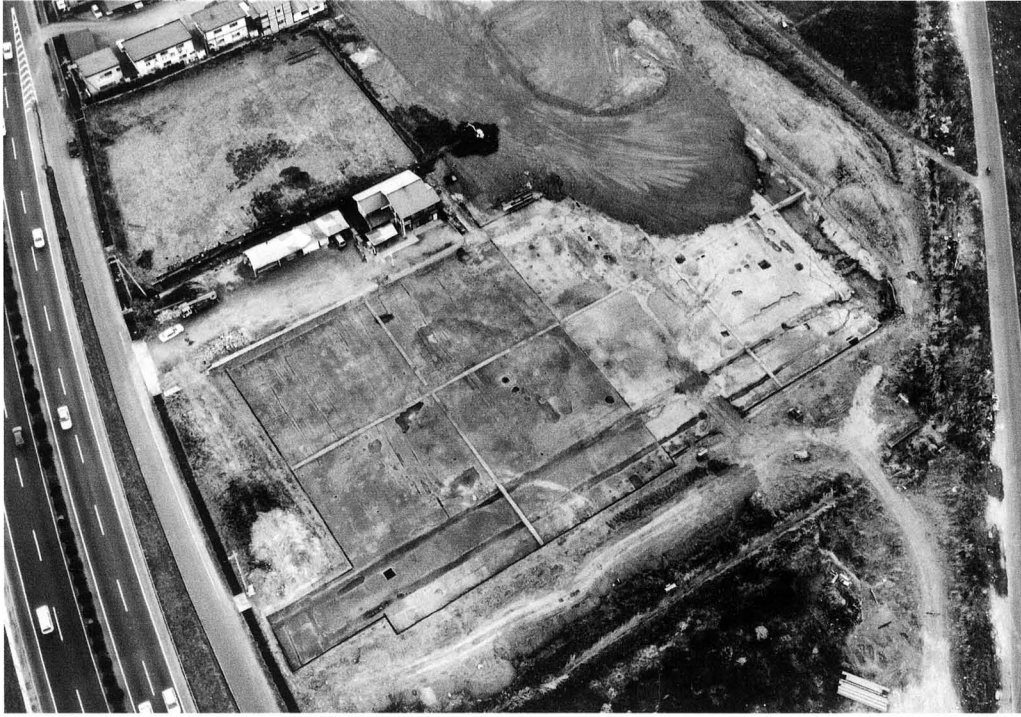
1 SB6500・6502
東から



2 SB6505・SA6506
南から



3 SB6510 北から



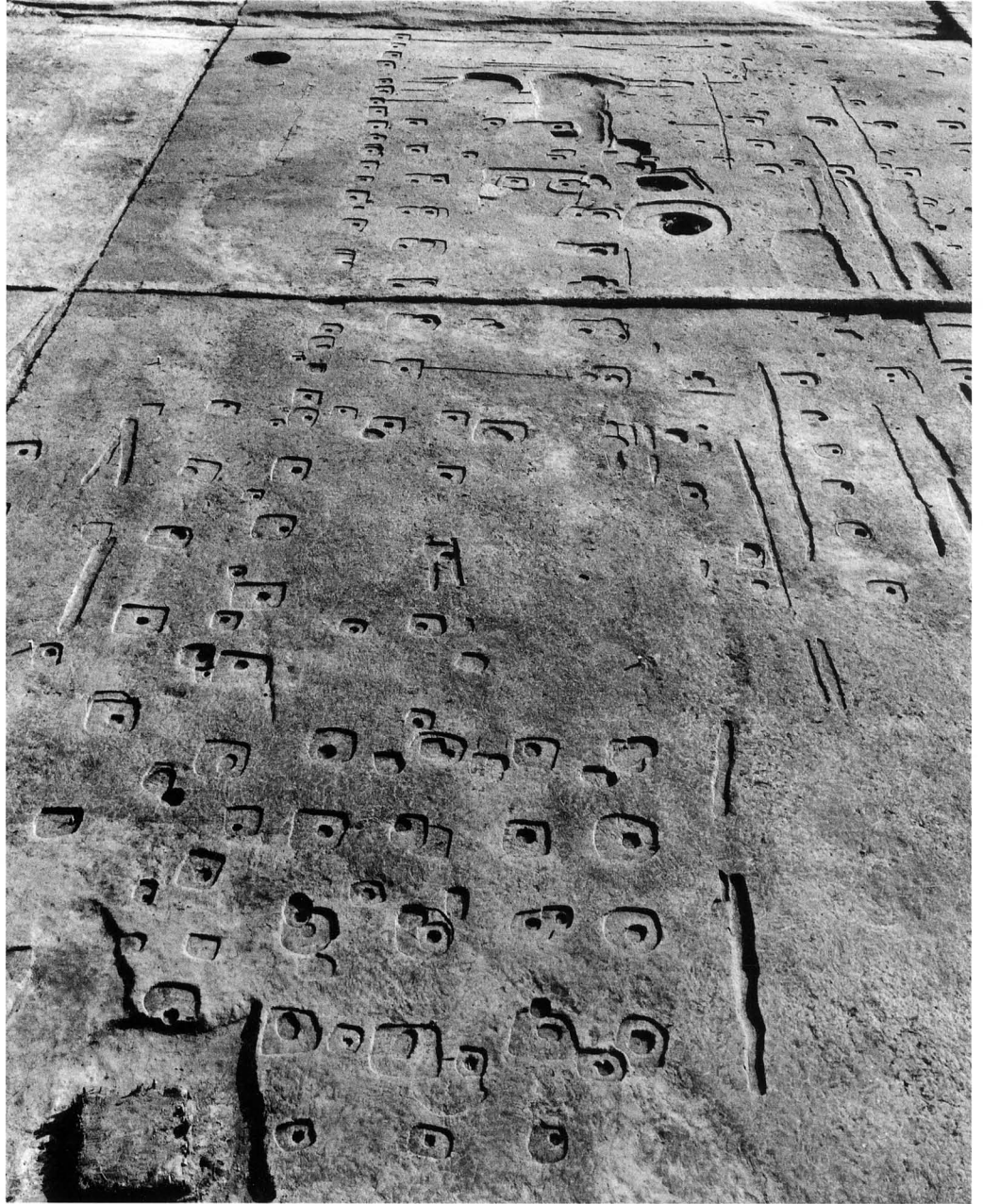
1 調査区全景
南西上空から



2 調査区全景
東から



3 調査区北半
東から



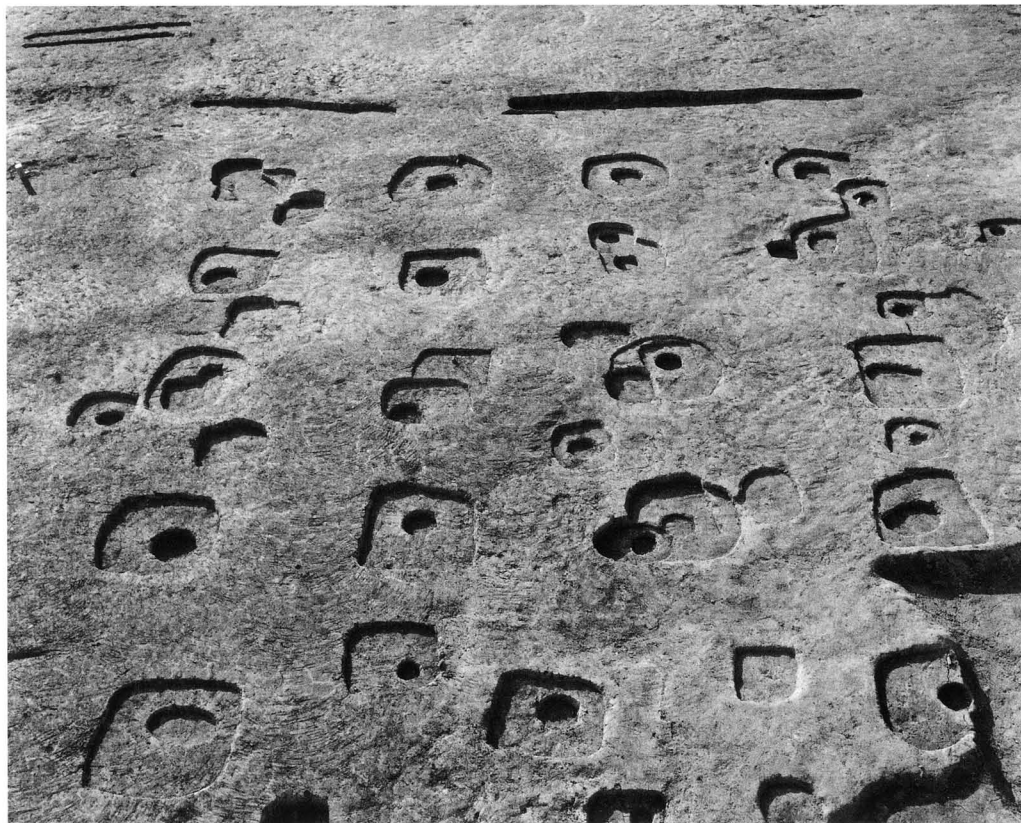
1 調査区東半
北から



2 SB6570 北東から



1 SB6555・6560
SA6540・6541
北から



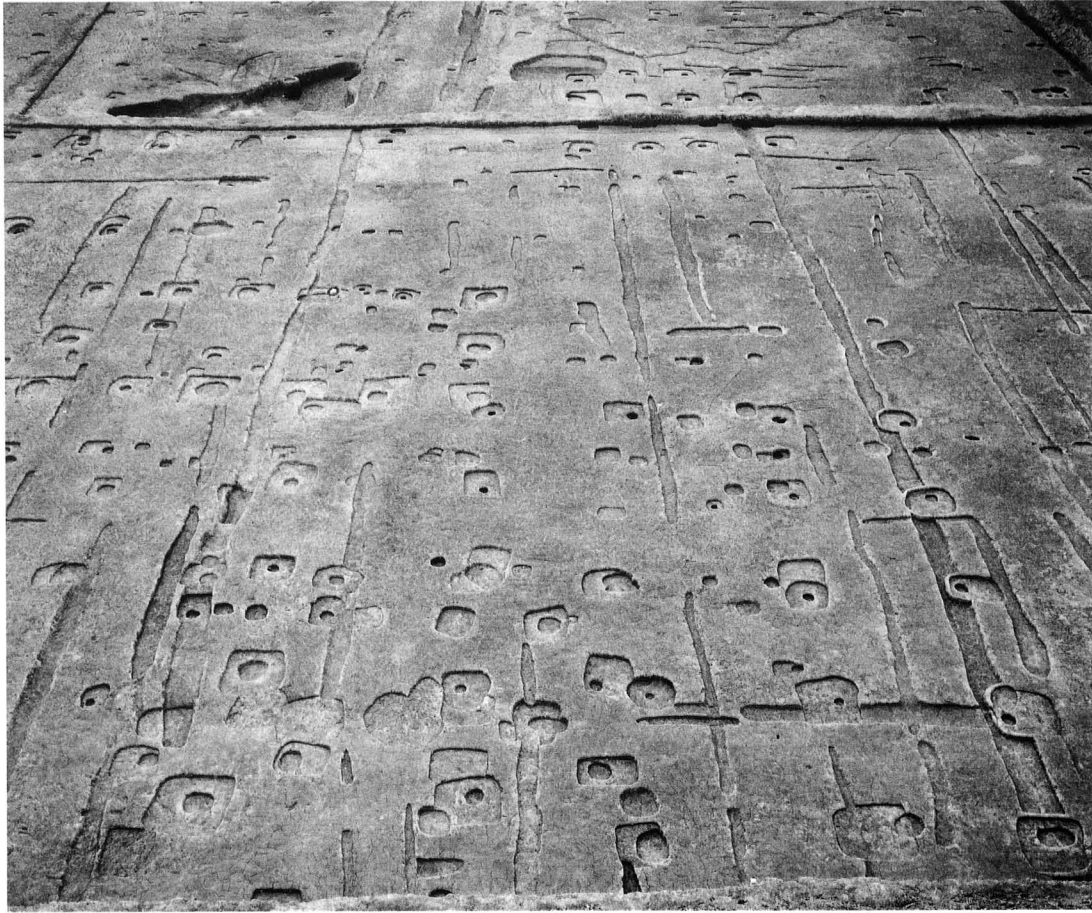
2 SB6562・6563
東から



1 SA6575・6567・
6559 西から



2 SB6585 東から



1 SB6590・6591・
6595 北から



2 SB6600・6601
西から



1 SB6602・6605 南東から 2 SB6606 南東から 3 SB6469・6522 西から



1 調査区全景
北から



2 調査区全景
東から



3 SB6639・6640
東から



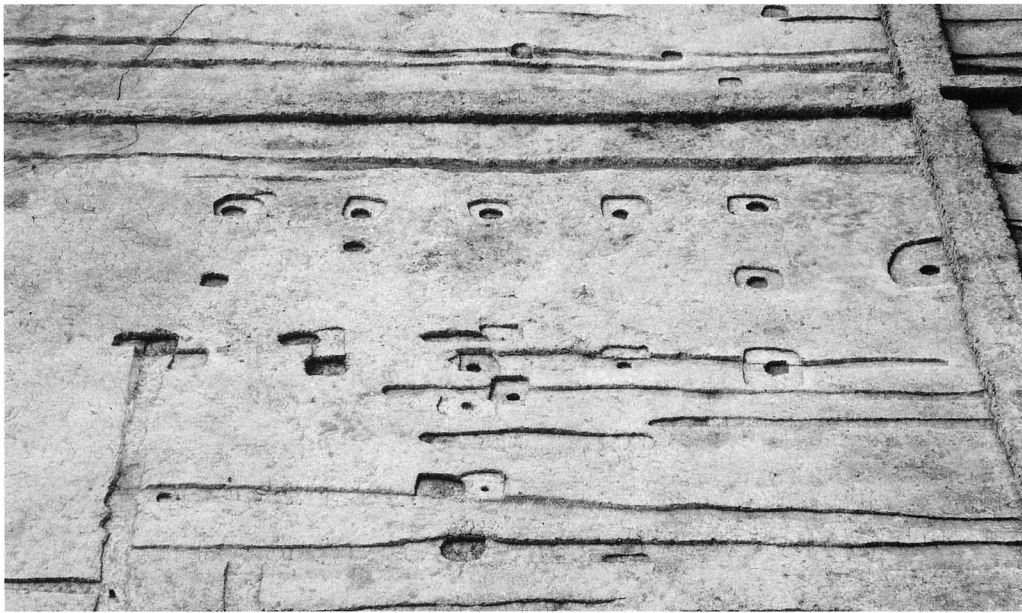
1 SB6630・6635・
SK6636・SA6670
東から



2 SB6665・6666
南東から



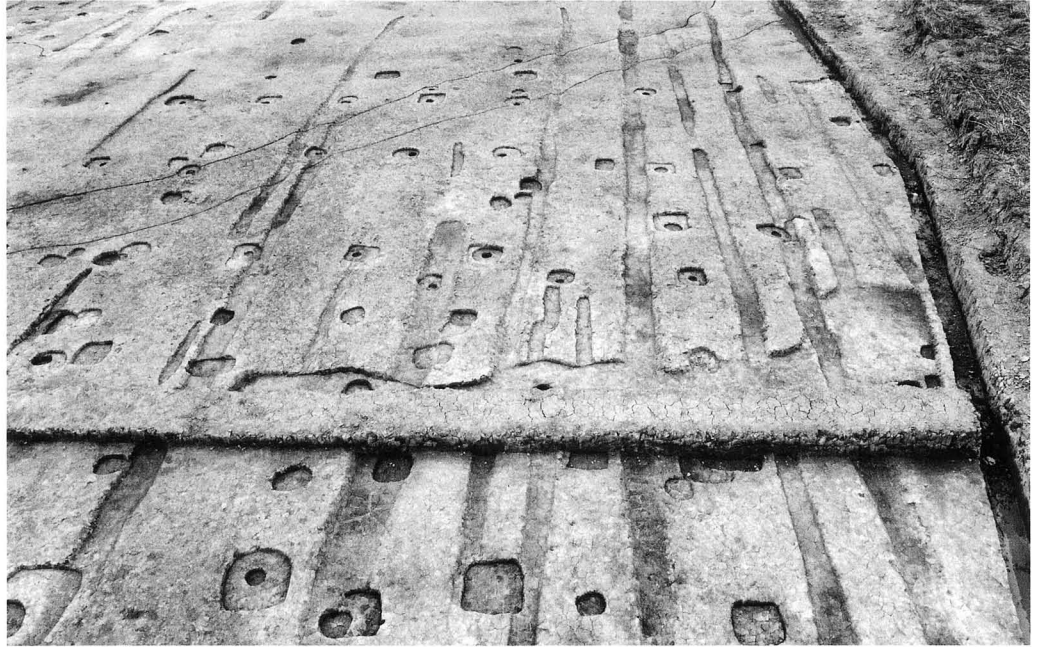
1 SB6626 東から



2 SB6625 東から



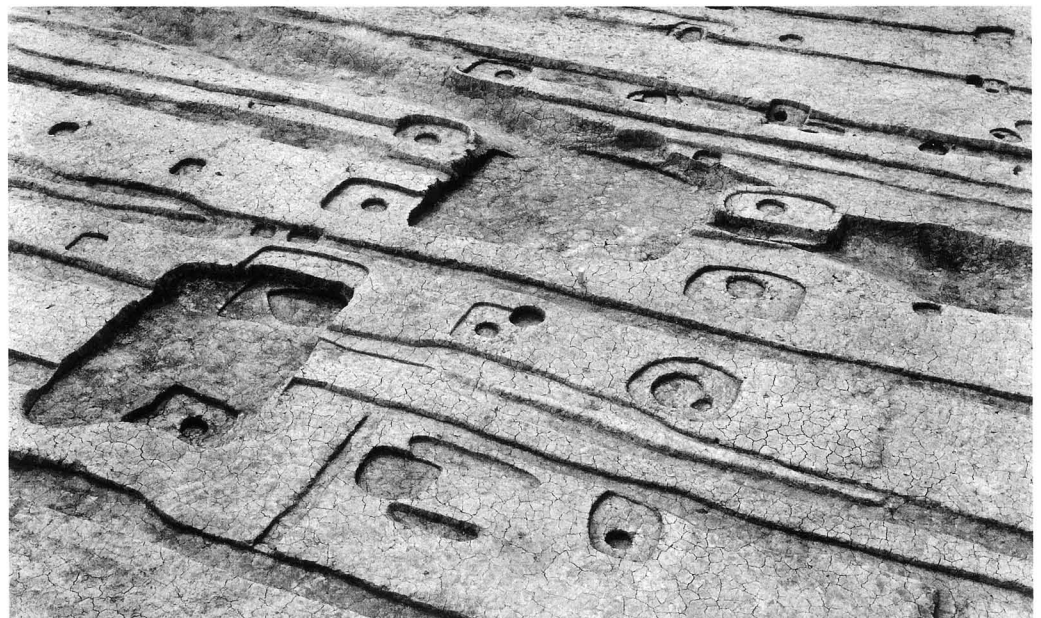
3 SB6620 北東から



1 SB6645・6646・
6647 北から



2 SB6650・6652・
SD6642 東から



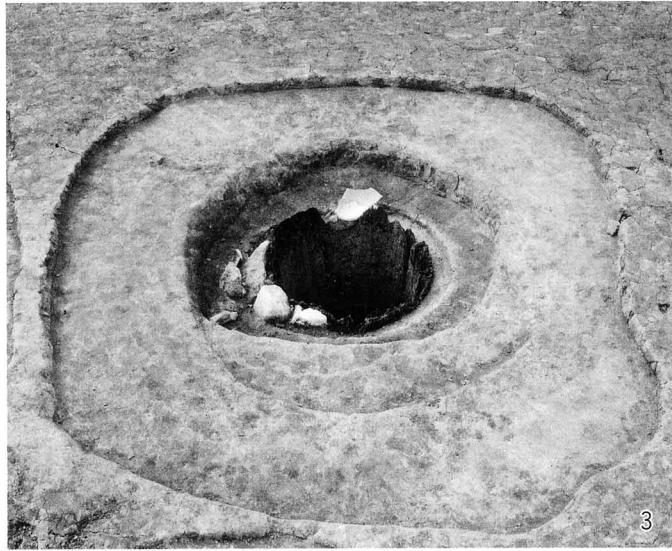
3 SB6660・SE6658・
SK6659 北東から



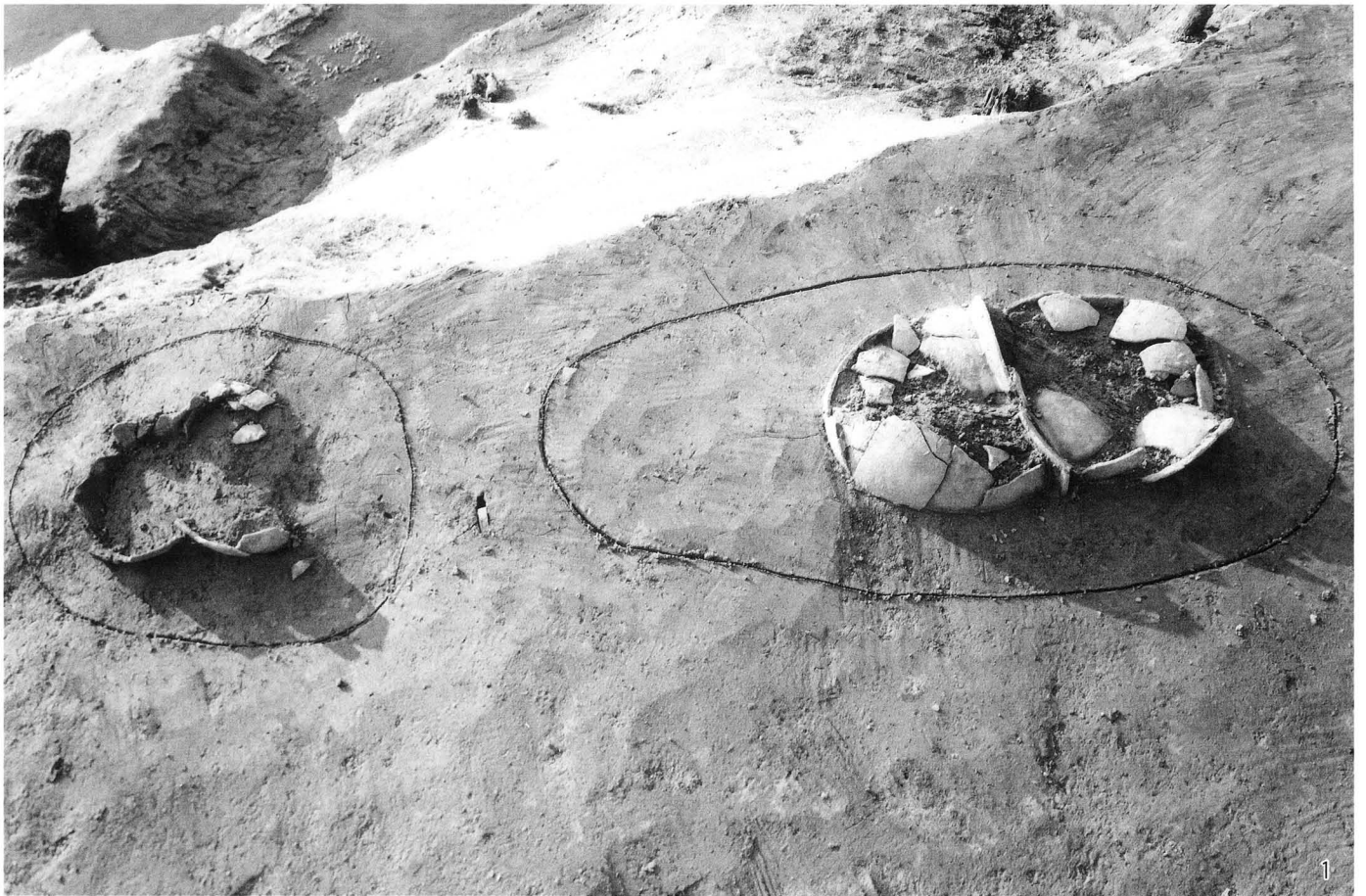
1 橋SX6420 西から 2 橋SX6525 北東から 3 橋SX6532 北東から 4 土坑SK6423 北から



1 東西溝SD6430・地橋SX6429 東から 2 南北溝SD6594 北から 3 祭祀土坑SX6530 東から
4 木棺墓SX6428 南から



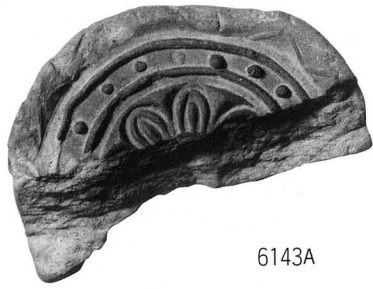
1 井戸SE6432 東から 2 同前井戸枠 南から 3 井戸SE6561 東から 4 同前井戸枠 南西から
 5 井戸SE6657 南西から 6 曲物埋設遺構SX6422 東から



1 SX6460・6461 東から 2 SX6448 西から 3 SX6485 西から 4 SX6533 北東から



6012B



6143A



6272B



6282Bb



6282Ca



6285A



6291Ab



6304L



6314A



6308C



6346Aa



6346Ab



6641J



6663F



6663J



6668C



6681A



6681C



6691A



6703A



6710A



6710C



6716C



6721A



6721A



6721C



6721Gb



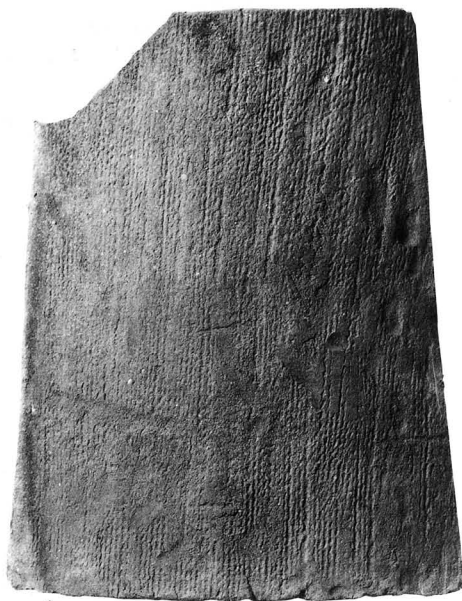
文様塼



丸瓦



土管



平瓦2



平瓦1

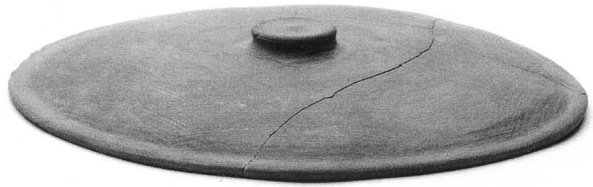




953・954—土馬 944—小型模造竈 601—墨書人面土器底部
 664・670—墨書人面土器内部当具痕 534—硯面の布目



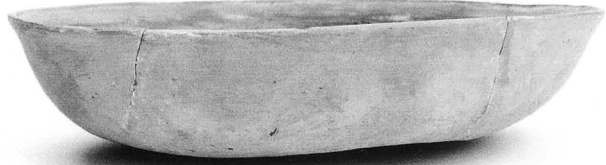
3



26



4



1



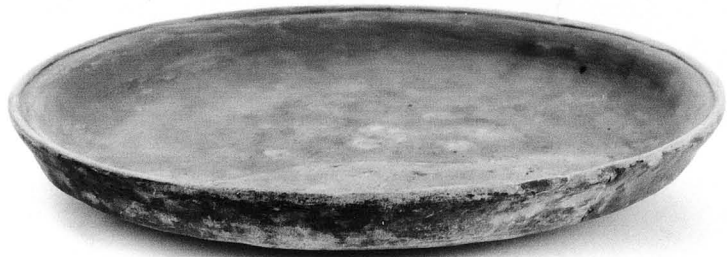
7



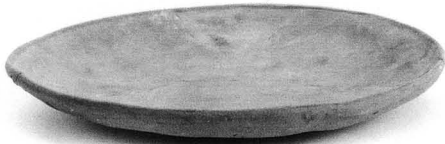
5



8



28



39



34



29



35



45



46



47



50



48



63



53



18



22



52



19



21



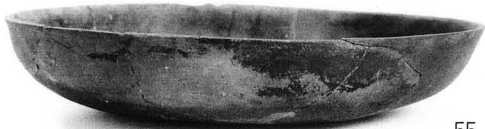
56



20



17



55



15



25



73



57



65



67



71



70



72



77



75



79



74



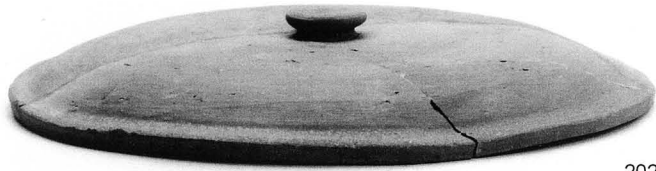
81



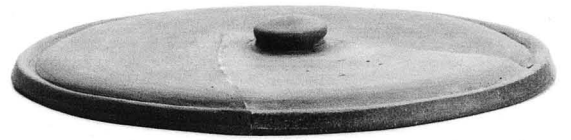
82



78



202



203



237



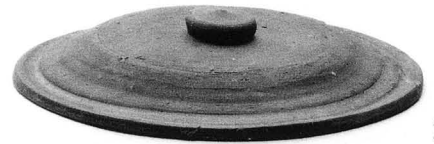
231



213



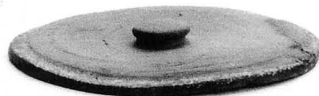
210



209



255



214



225



256



235



230



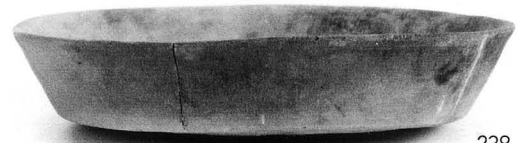
252



242



264



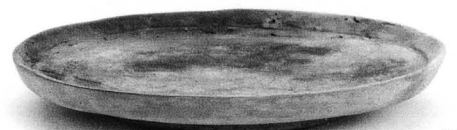
238



267



261



266



292



294



275



268



282



280



283



277



293



302



300



296



286



303



284



295



317



315



319



314



316



318



328



325



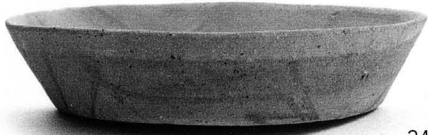
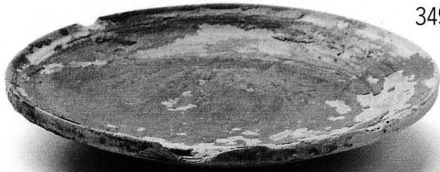
333



322



349



348



355



360



88



93



350



94



359



365



363



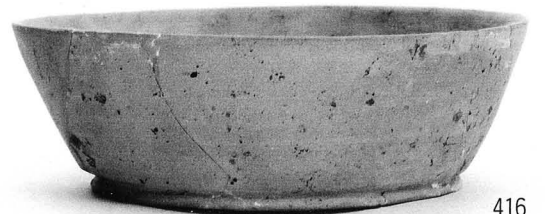
367



364



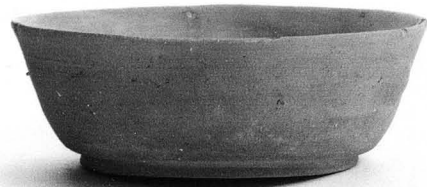
418



416



95



369



100



102



103



107



108



104



105



106



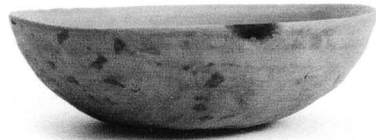
374



375



126



127



128



112



110



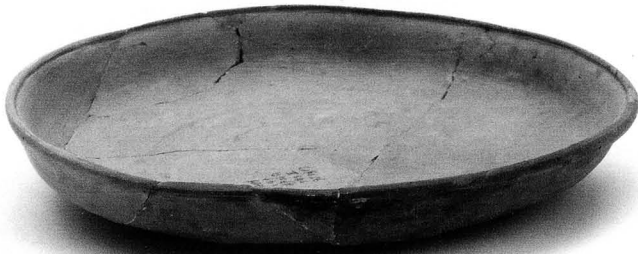
118



120



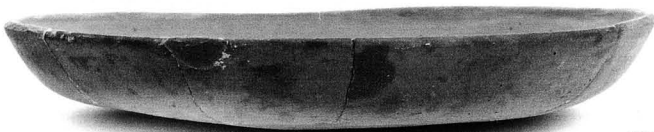
130



121



131



123



382



379



383



385



386



388



134



390



386



393



389



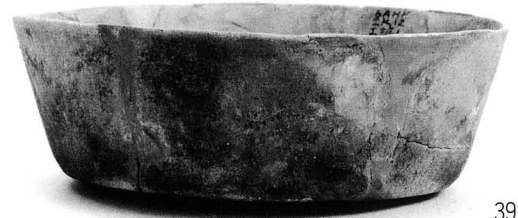
395



391



397



392



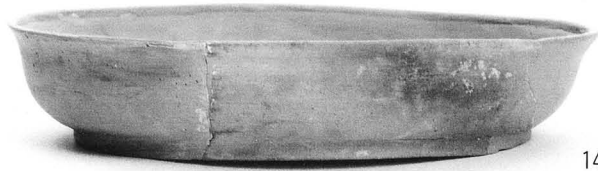
409



398



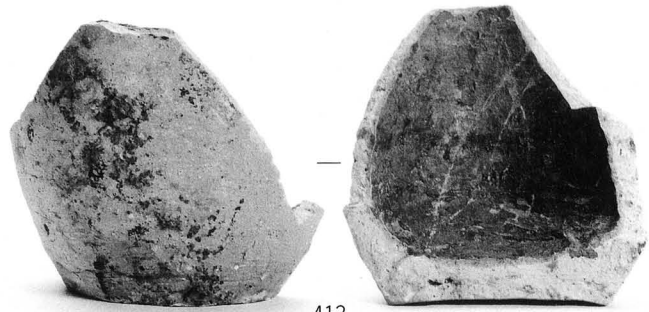
412



141



410



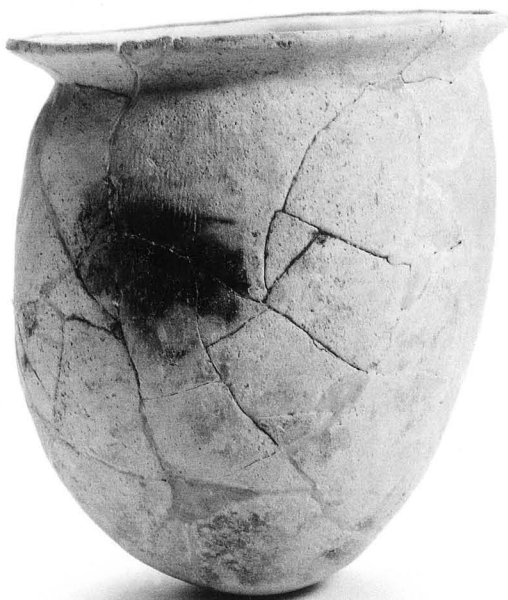
413



143



142



144



145



146



147



148



149



503



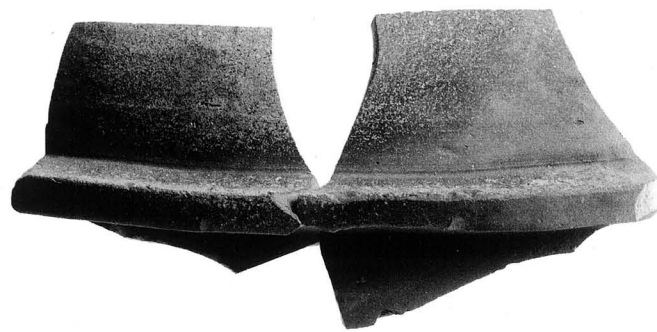
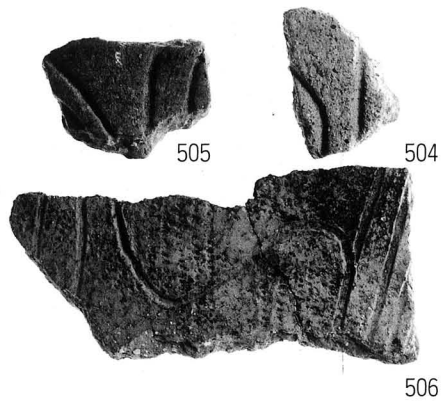
151



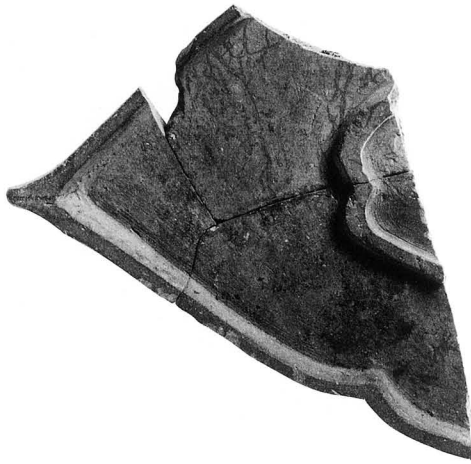
414



153



504~507 1:2 他 2:5



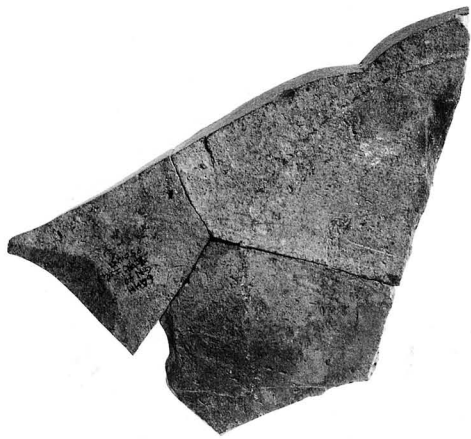
535



531



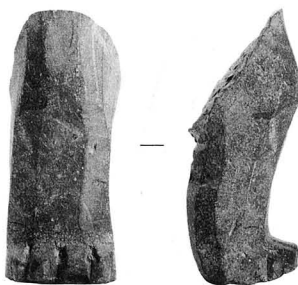
534



538



539



541



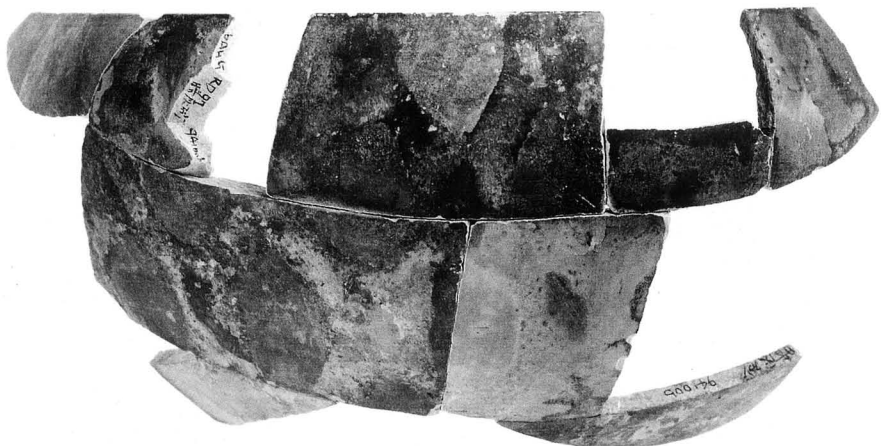
536



529



542



525



604



603



601



601'



606



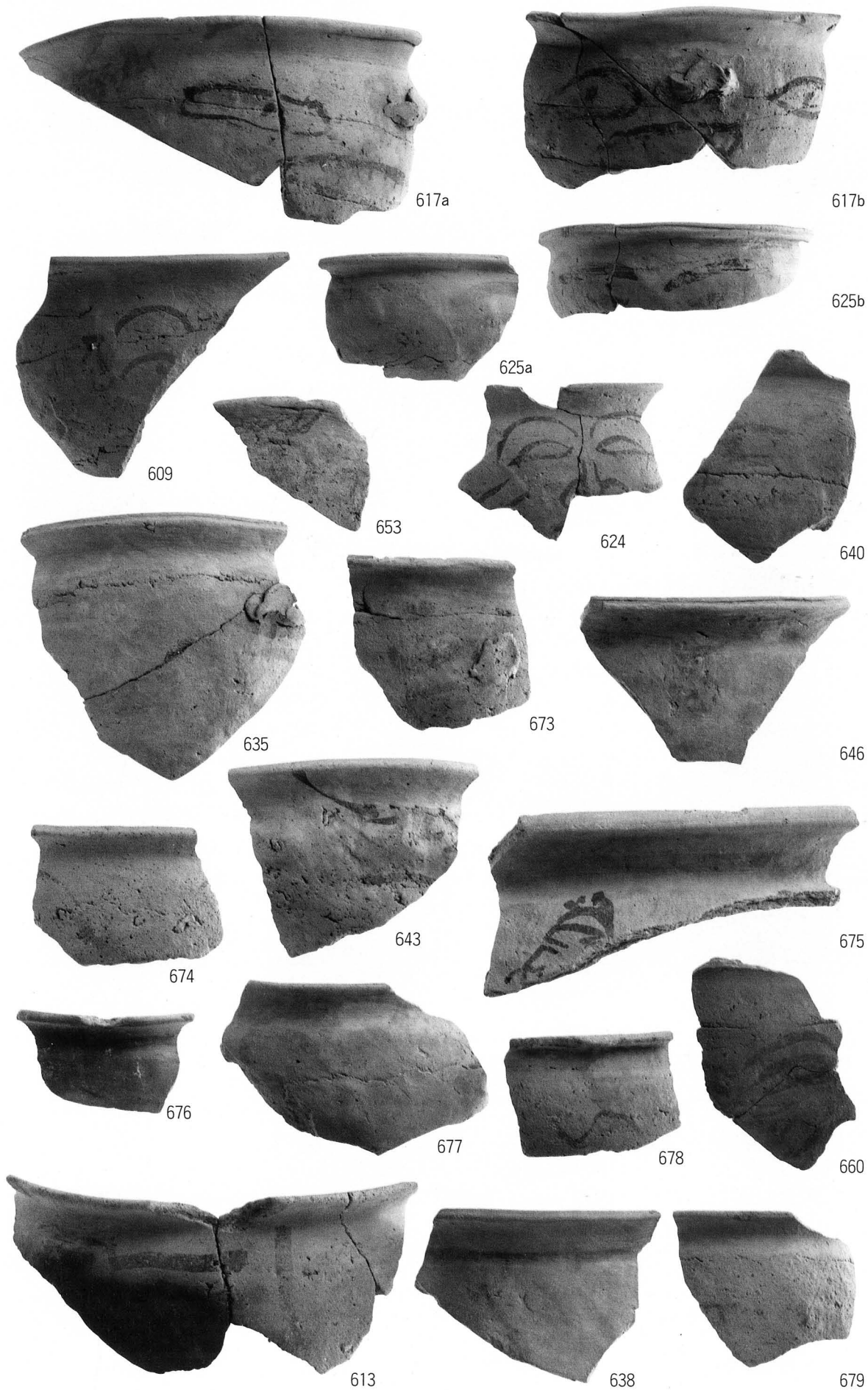
610

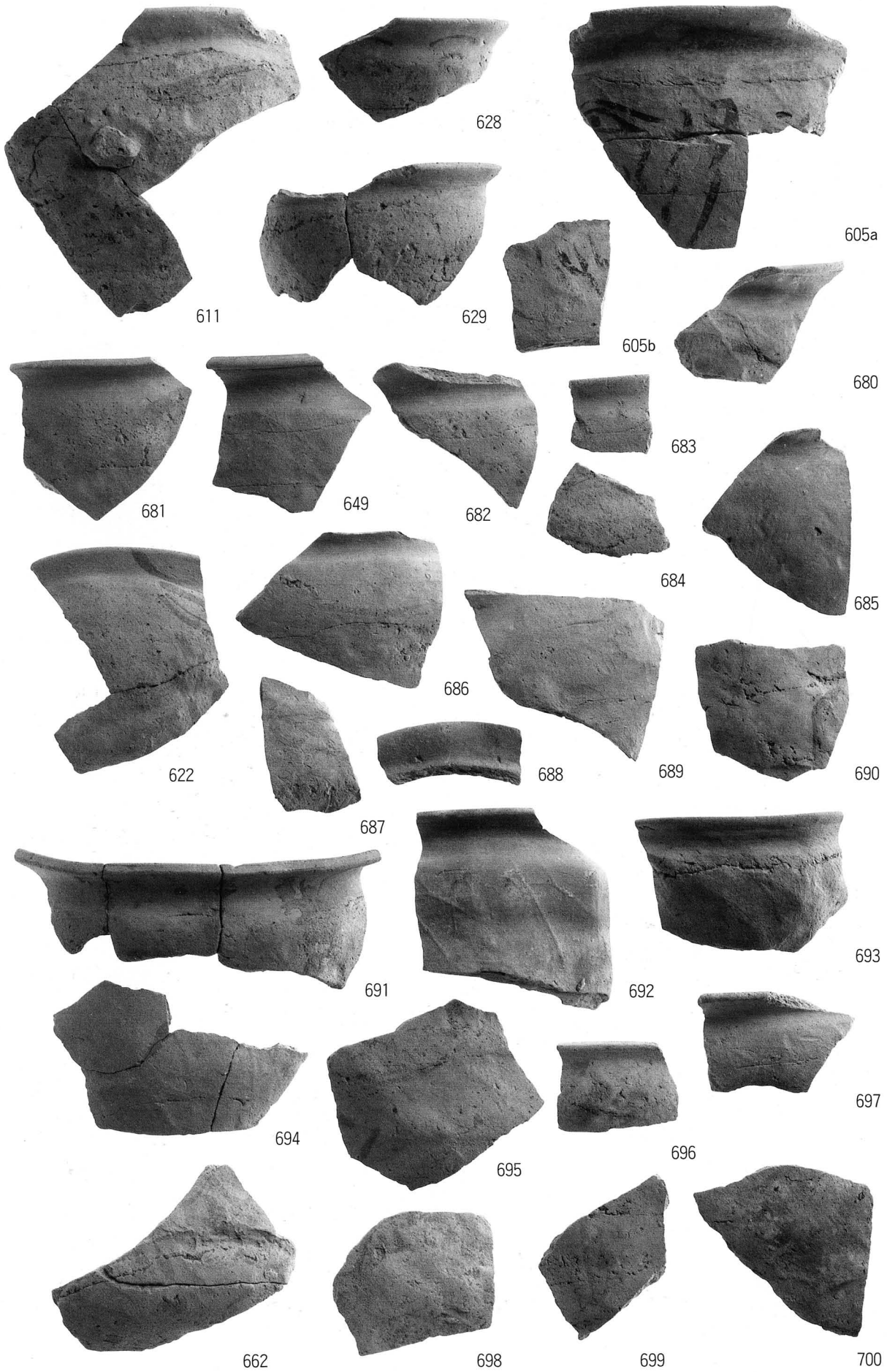


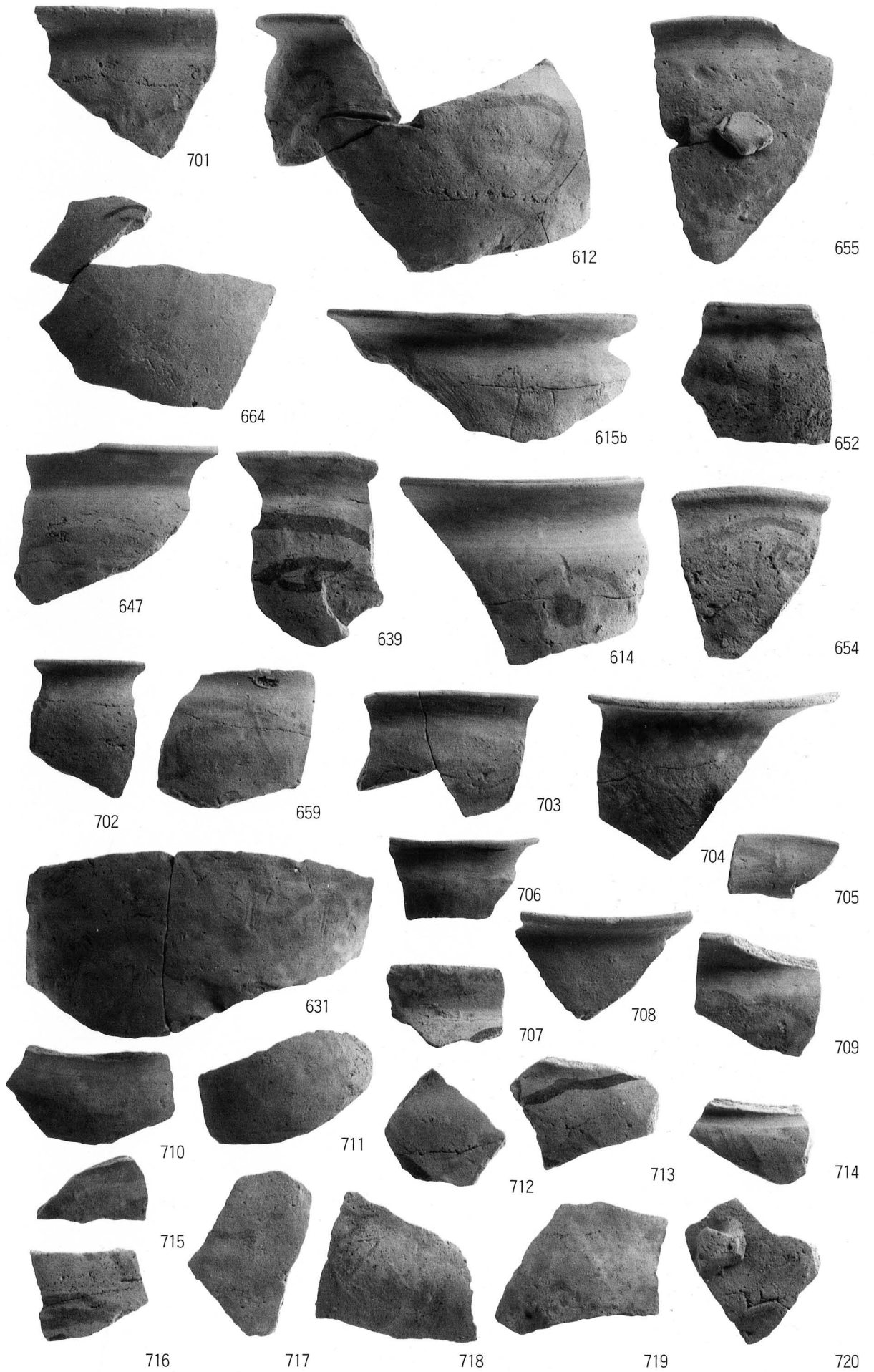
607

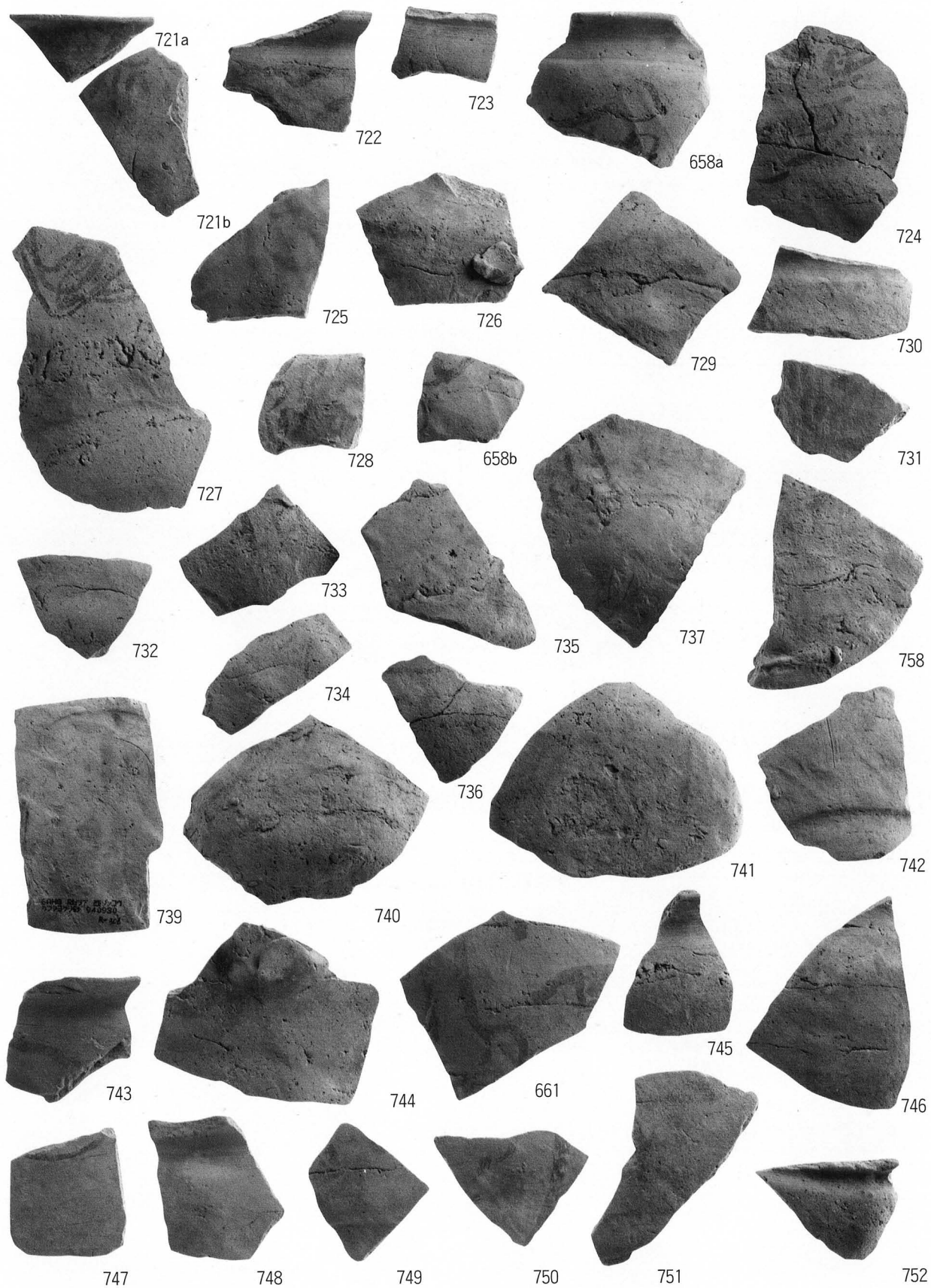


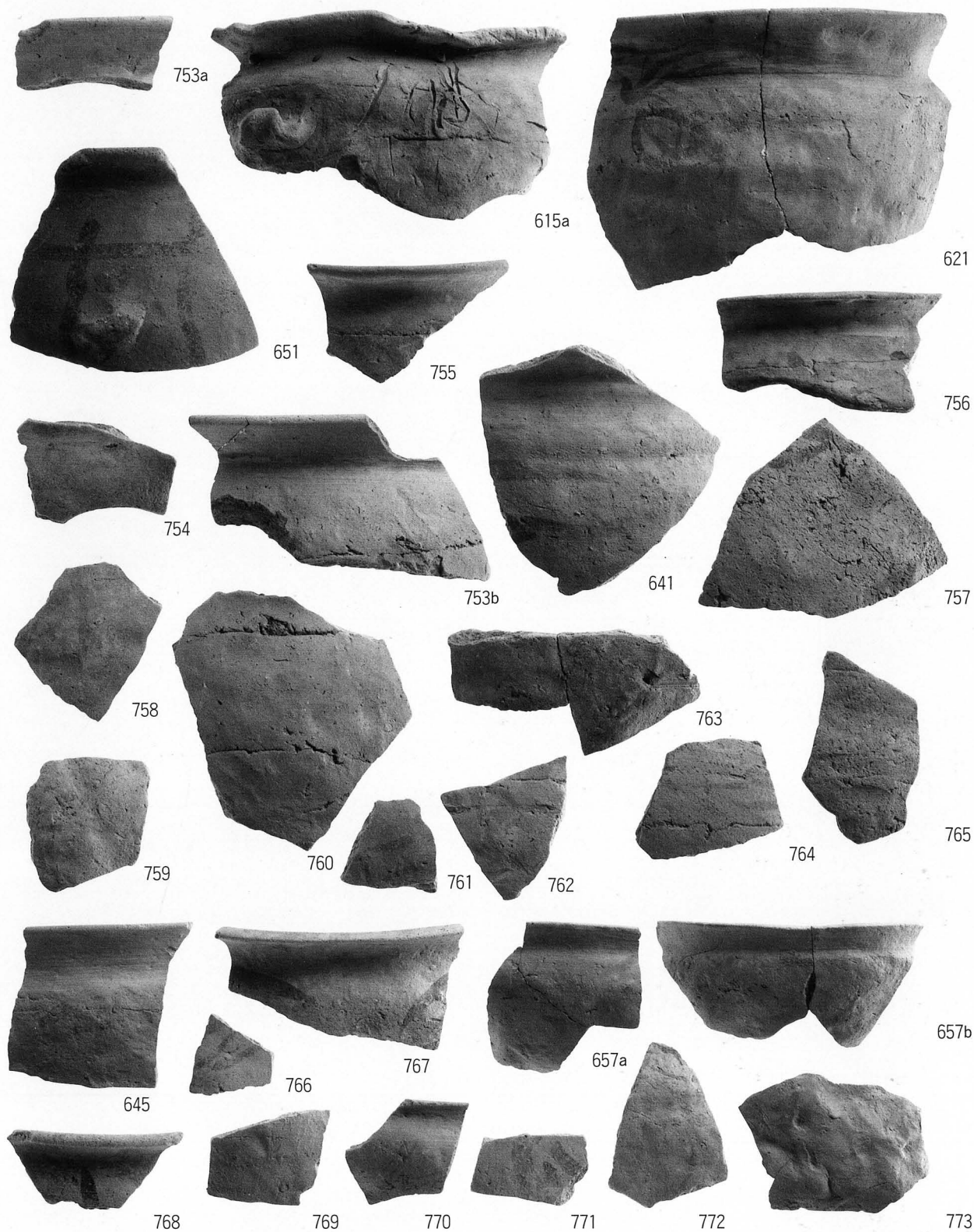
607'

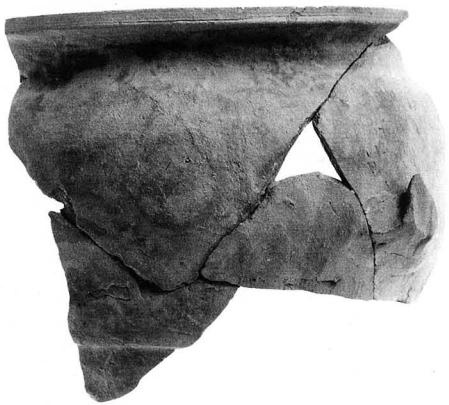
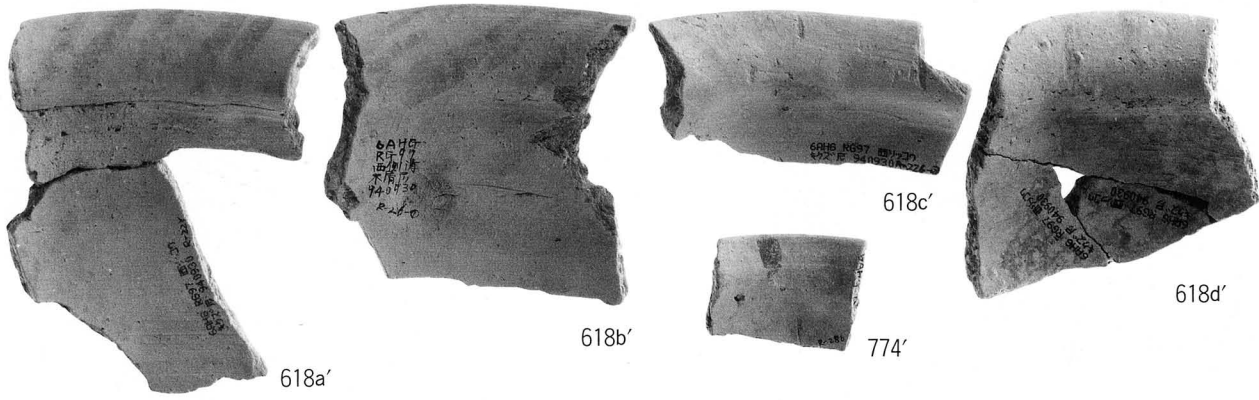
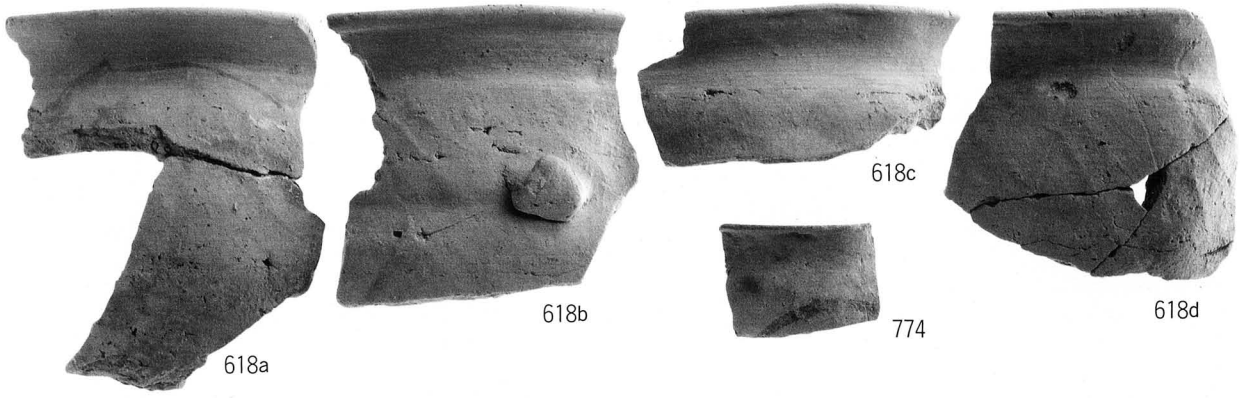




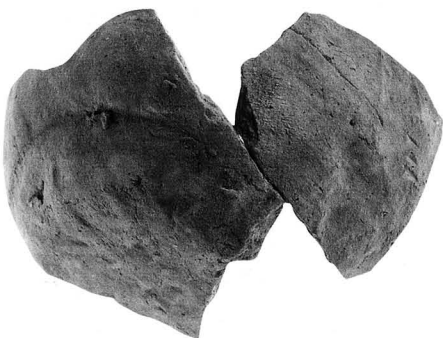
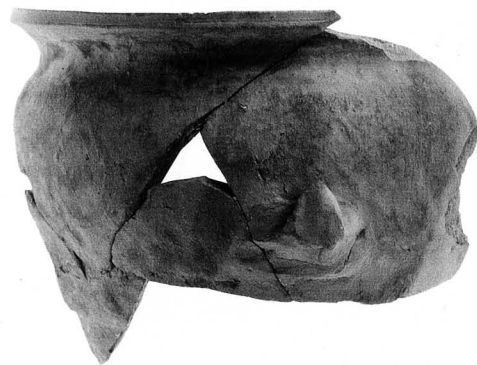




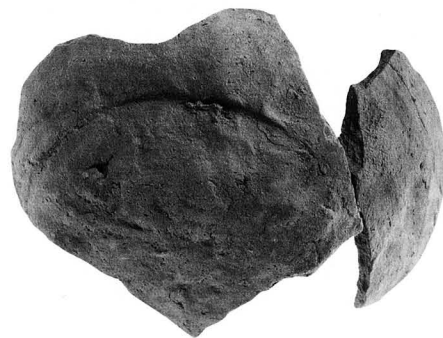


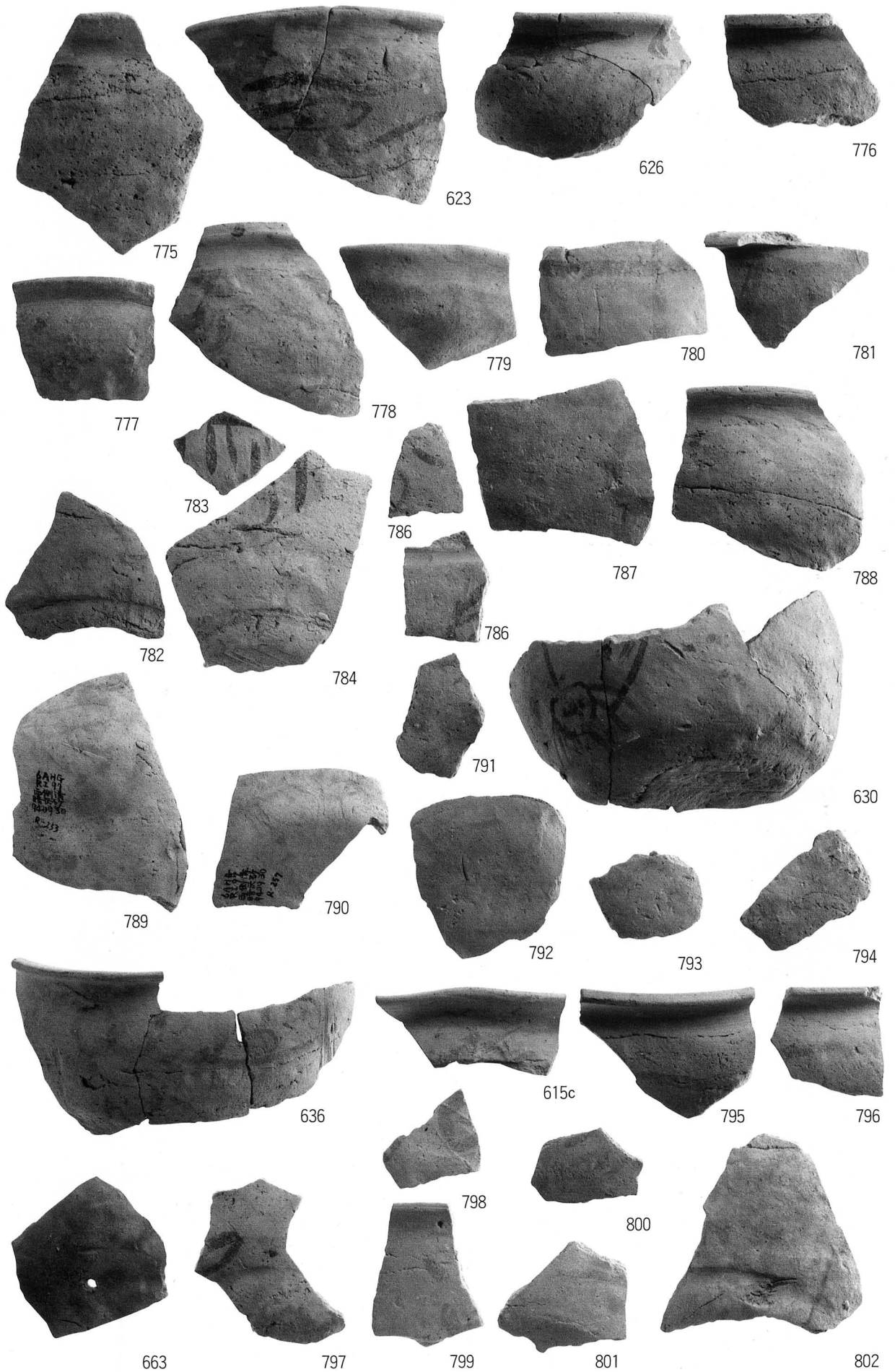


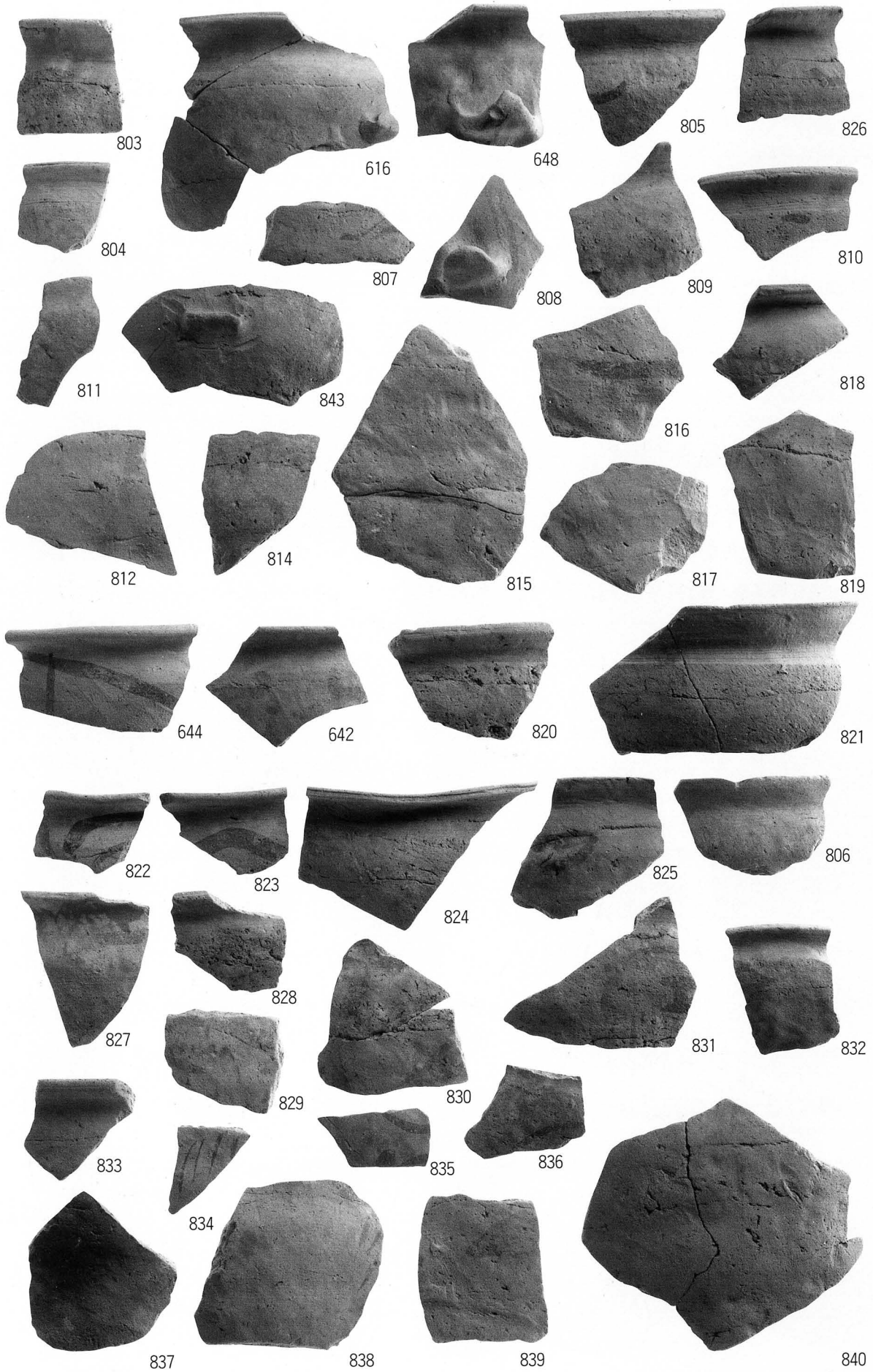
602

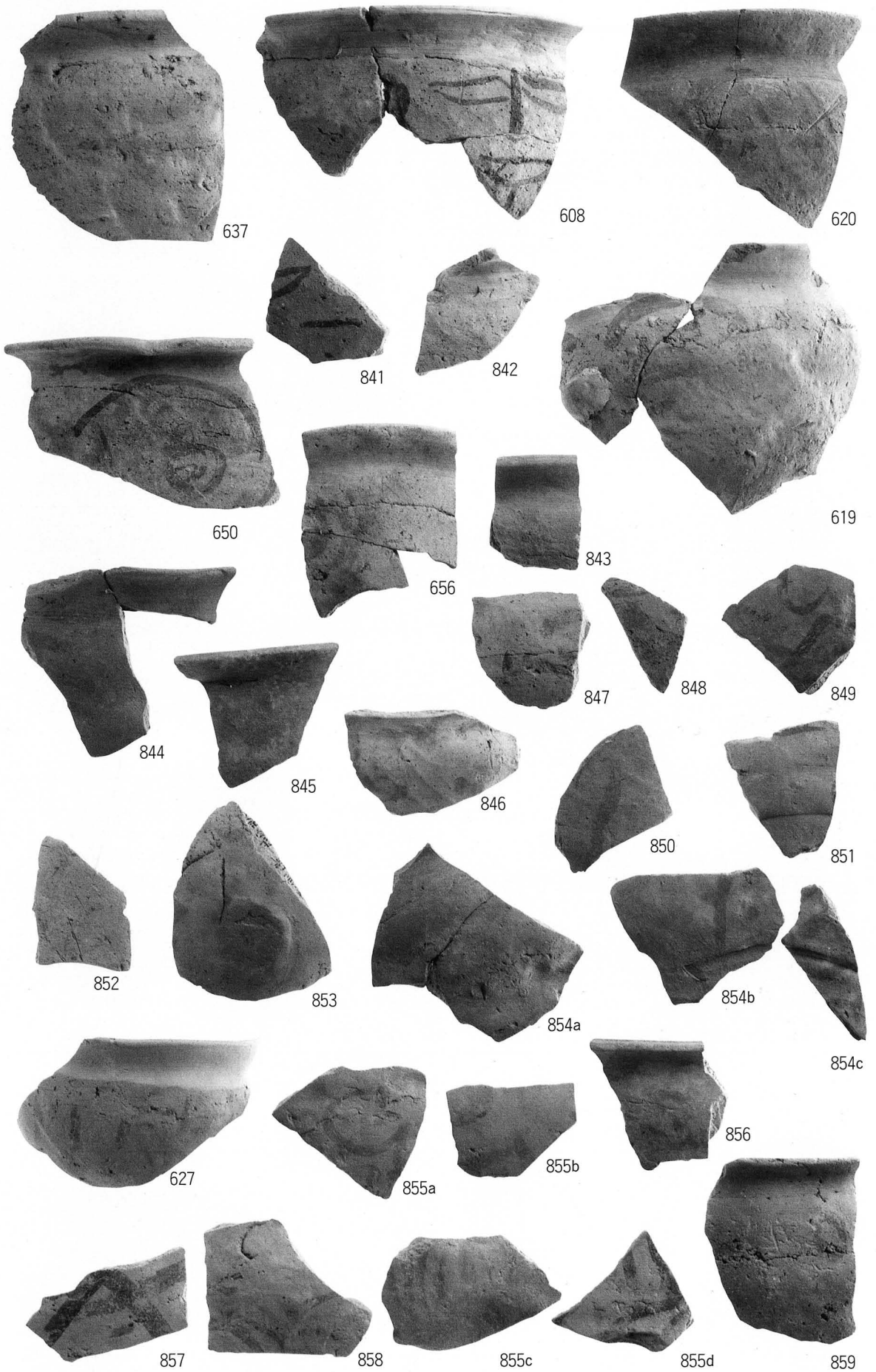


632



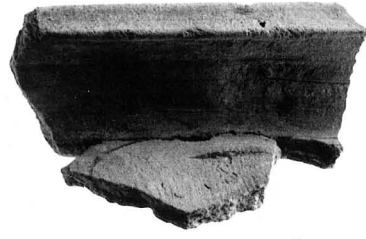








634a



634c



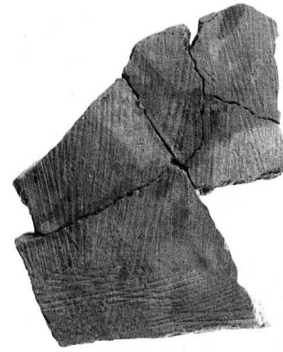
634b



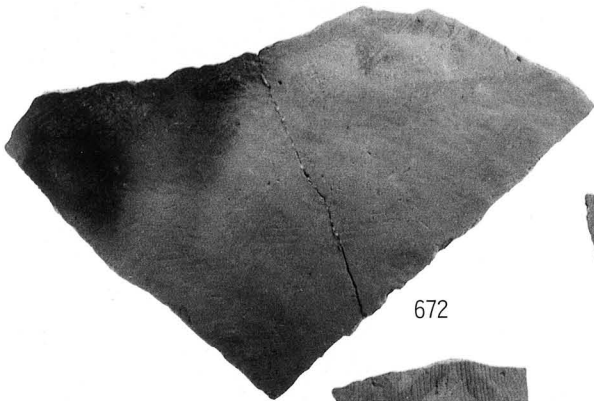
634d



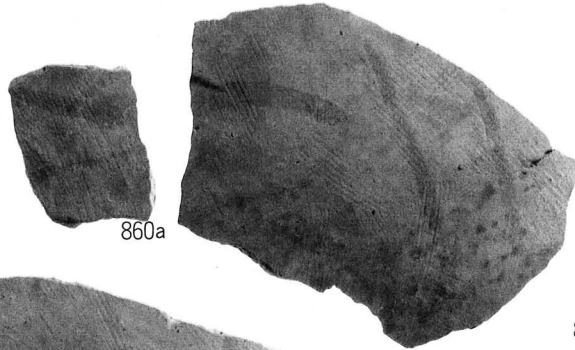
633



634e



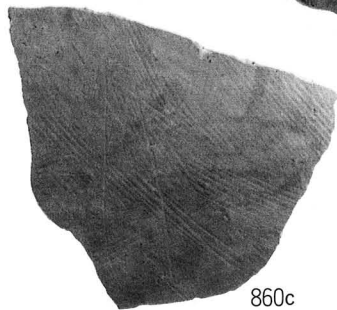
672



860a



860b



860c



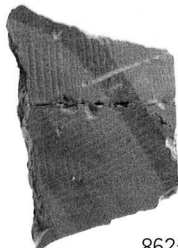
861



670



671



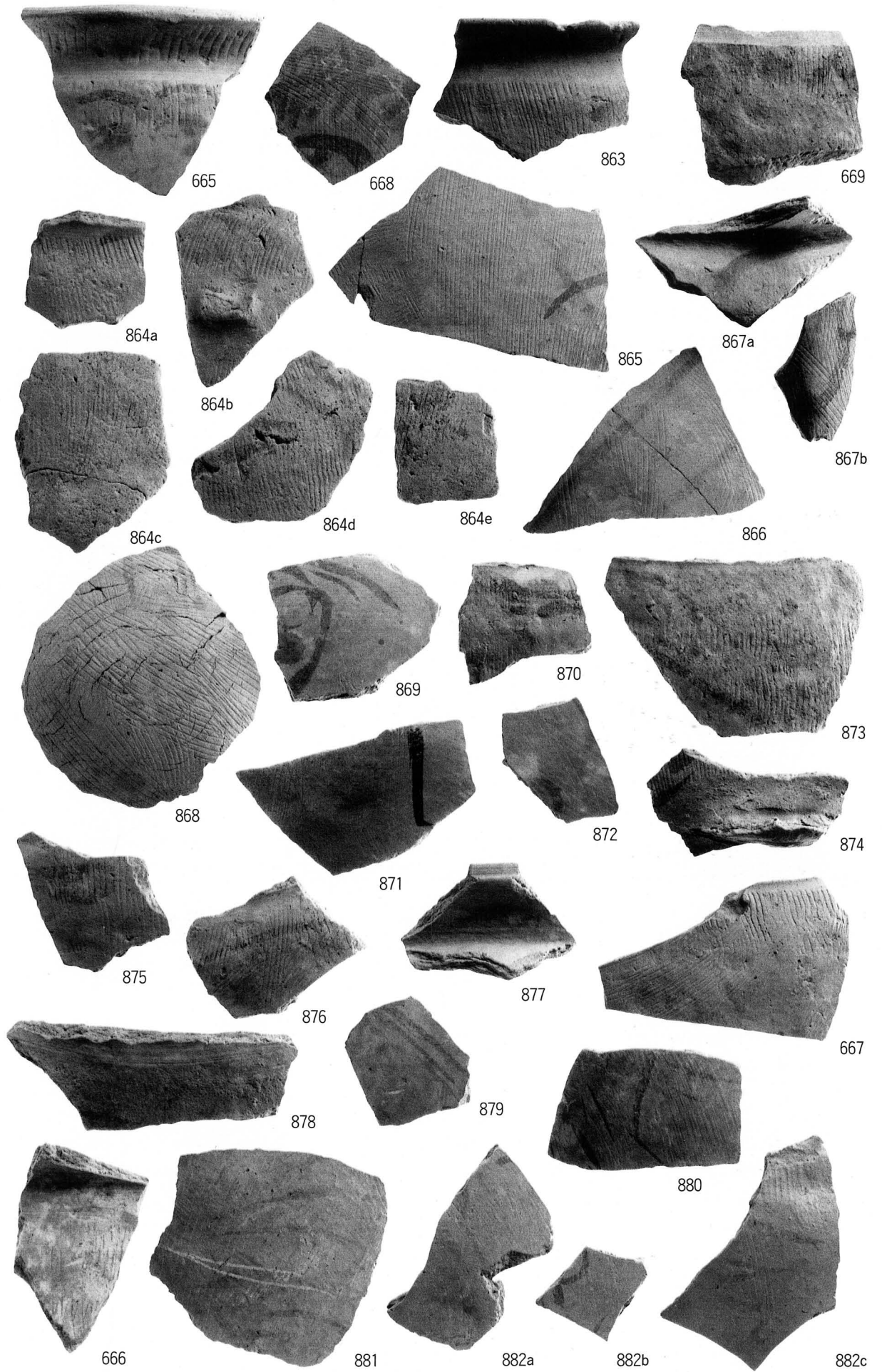
862a



862b



862c





904・929・941



904・906・923



904



923



908



906



901



922



921



911



909



925



916



912



913



918

917

919



928



929



930



934



935



938



939



932



940



937



941



943



942



944



953



954



960



961



958



956



957



963



964



947



959



945



951



965



966



946



950



955



948



952



967



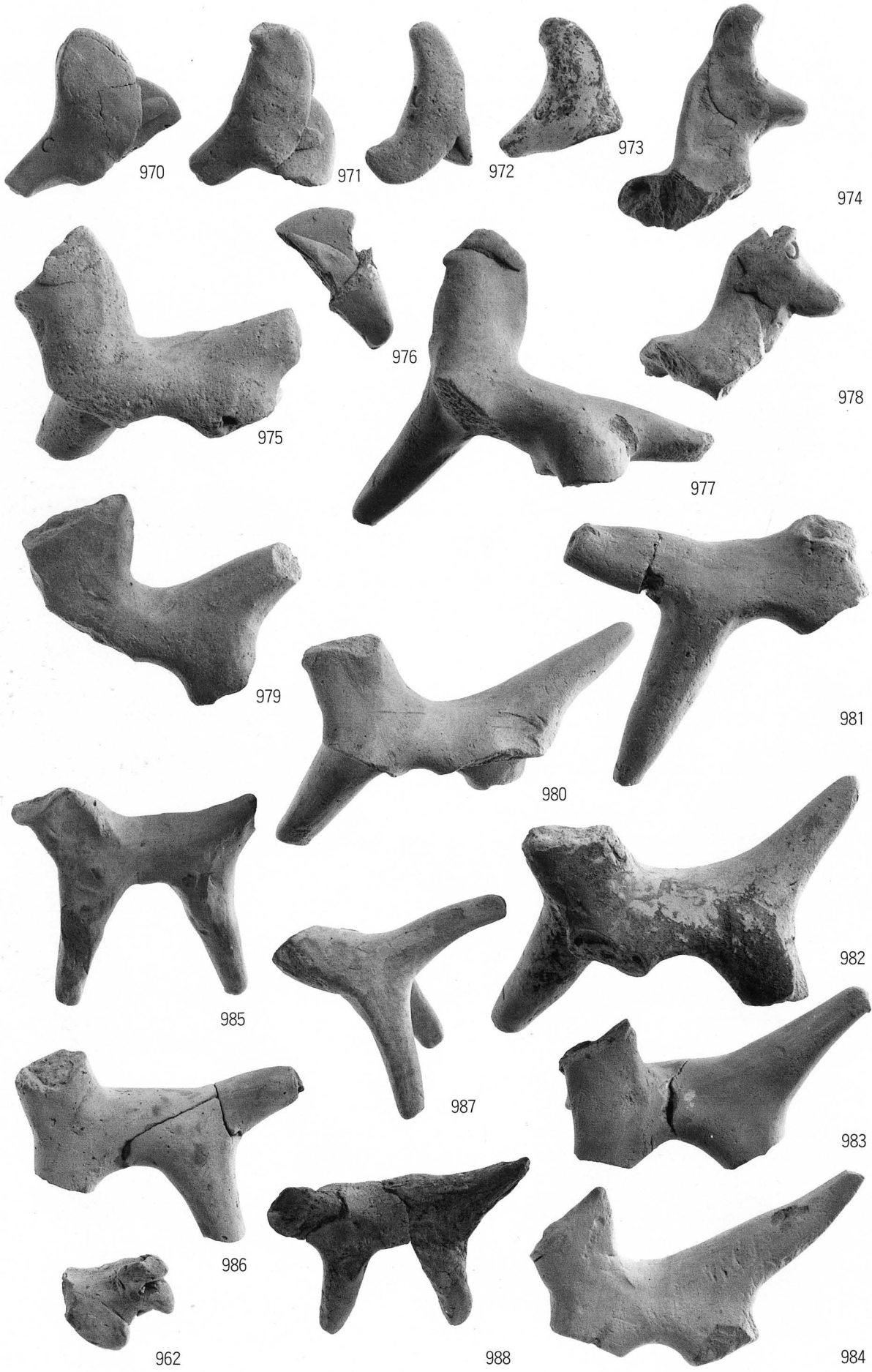
949

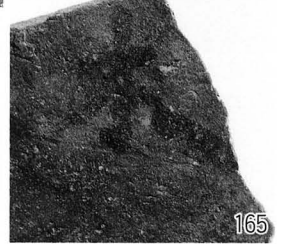
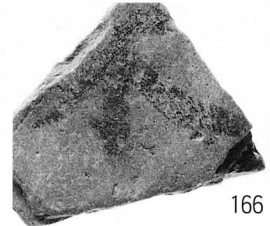
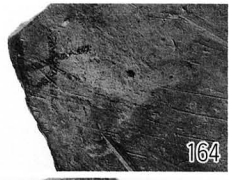


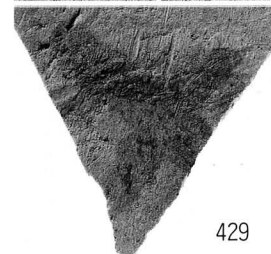
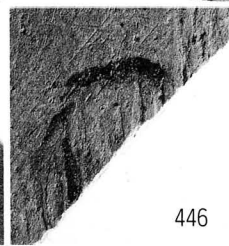
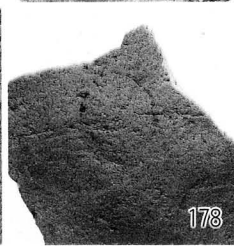
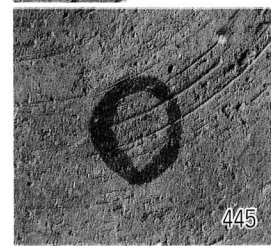
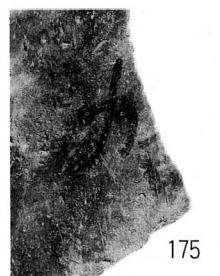
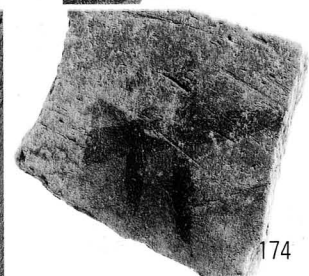
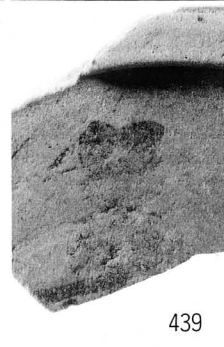
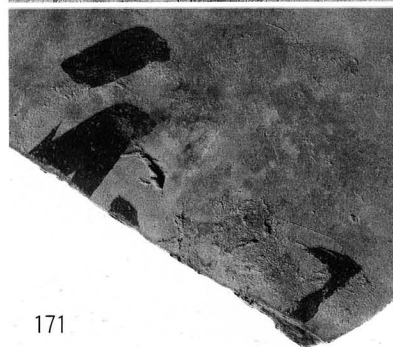
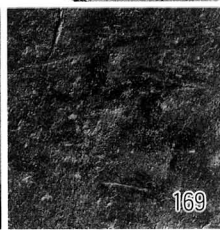
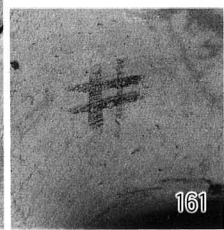
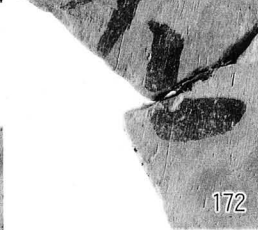
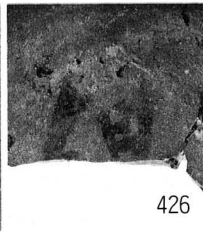
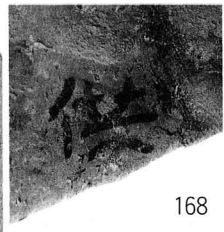
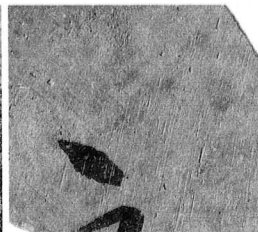
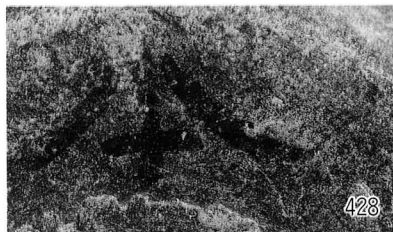
968

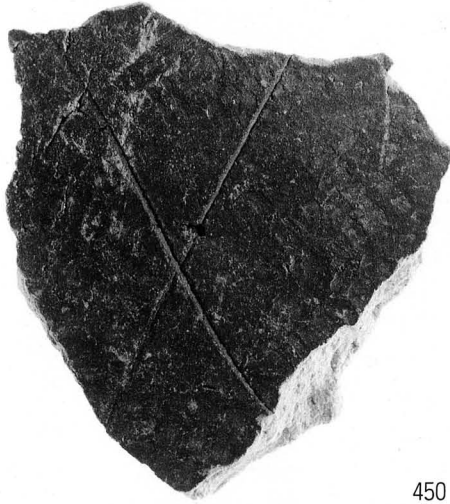
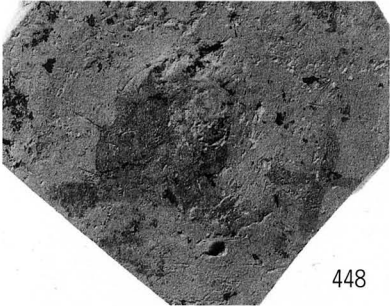
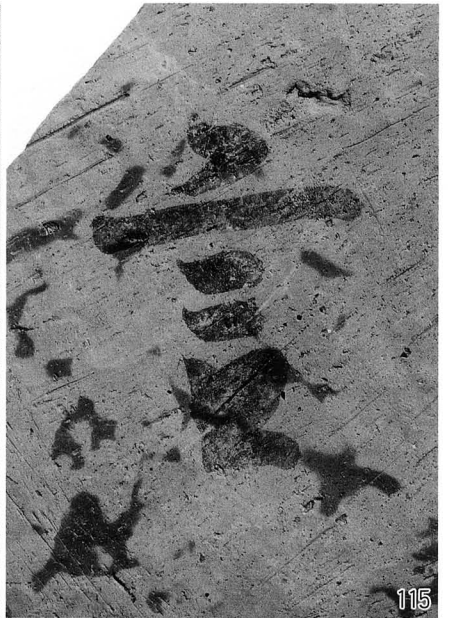


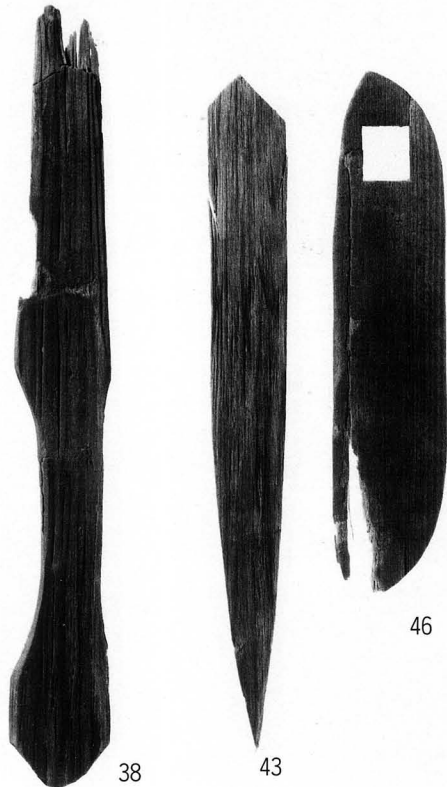
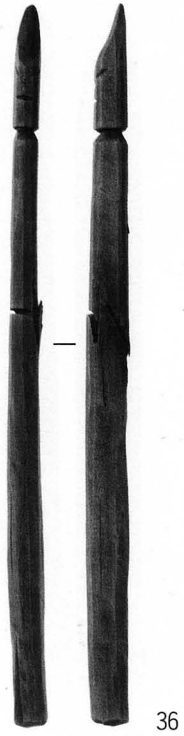
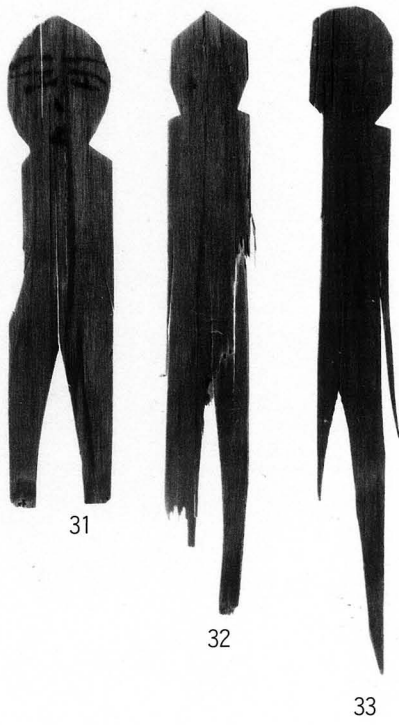
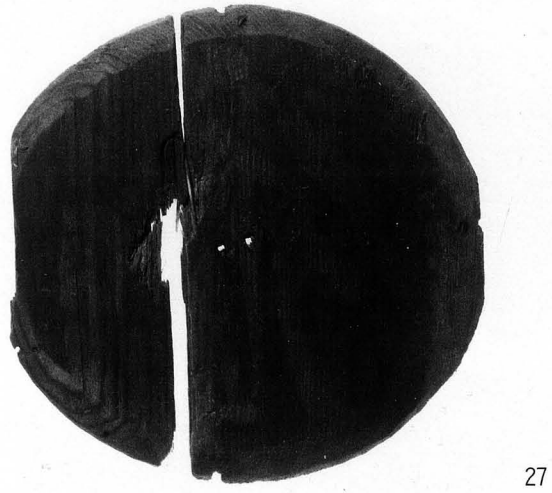
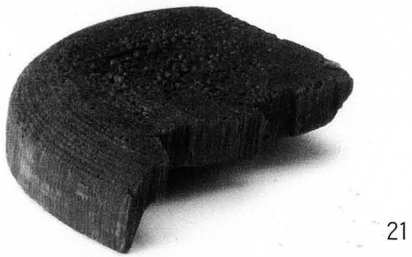
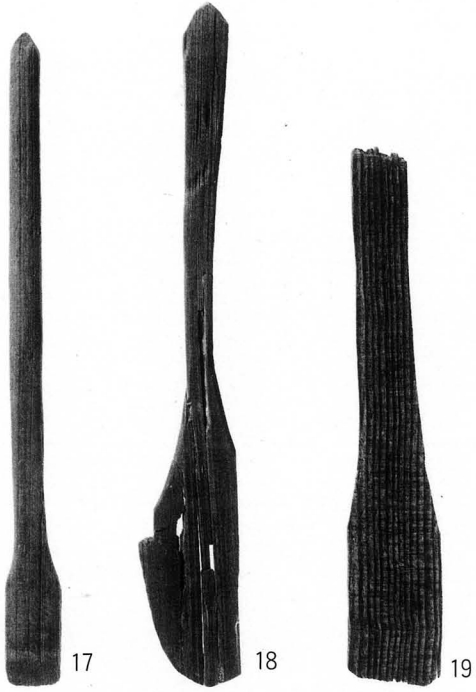
969









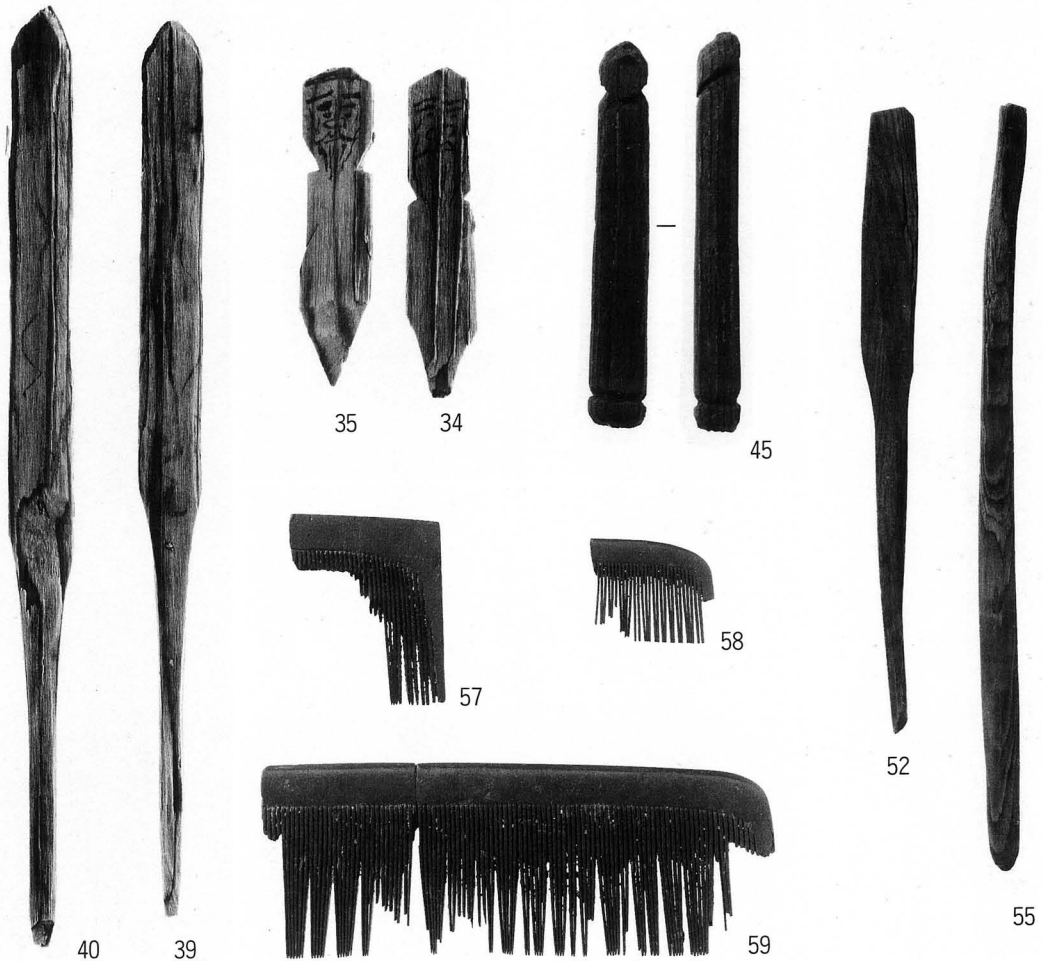


17~19・31~33・36・38・43・46 1:2 21 1:1 23・27 1:3



48

49



35

34

45

57

58

52

55

40

39

59



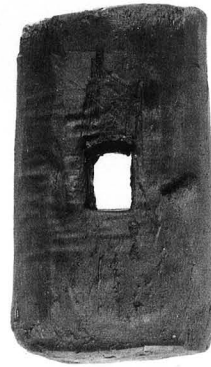
3



76



4



12



13



10



11



6



7



8



15



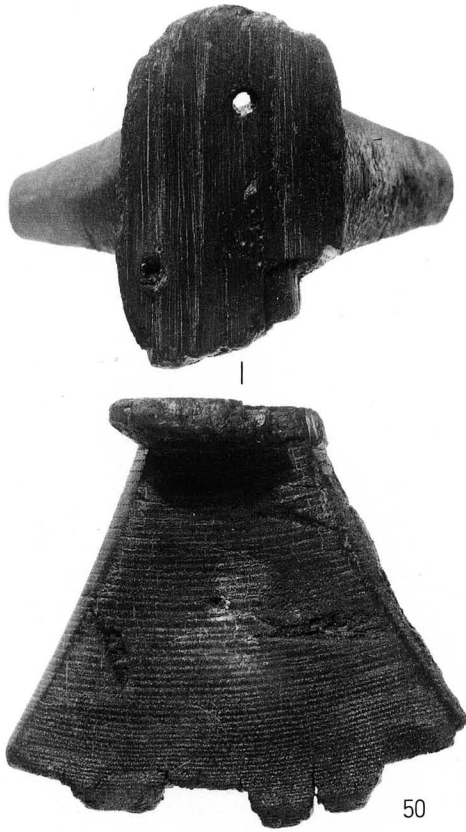
16

3・4・6~8・10~13・15・16—SD6400

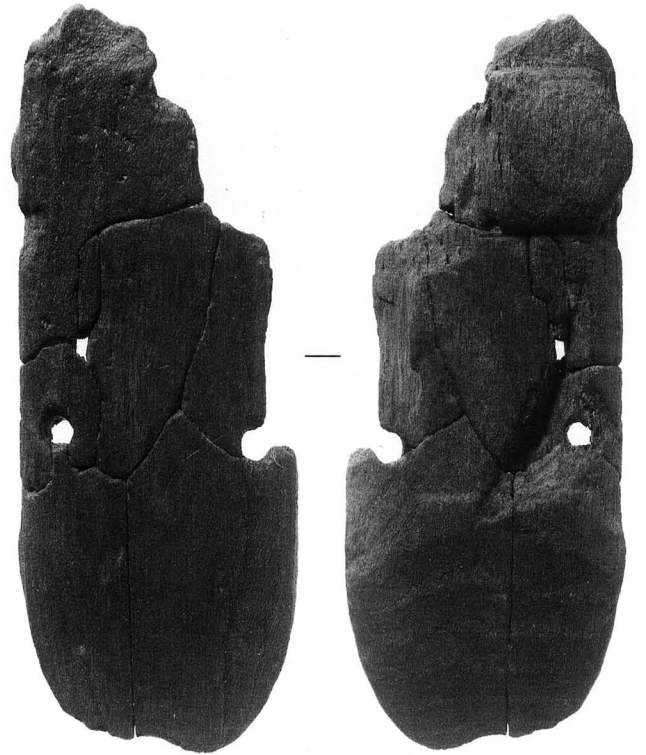
76—SE6657

12・13 1:3

他 1:2



50



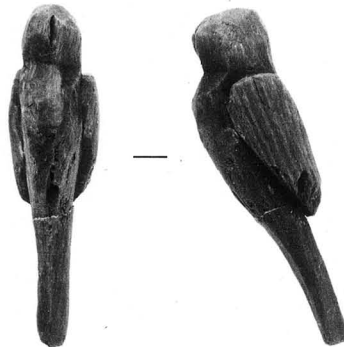
51



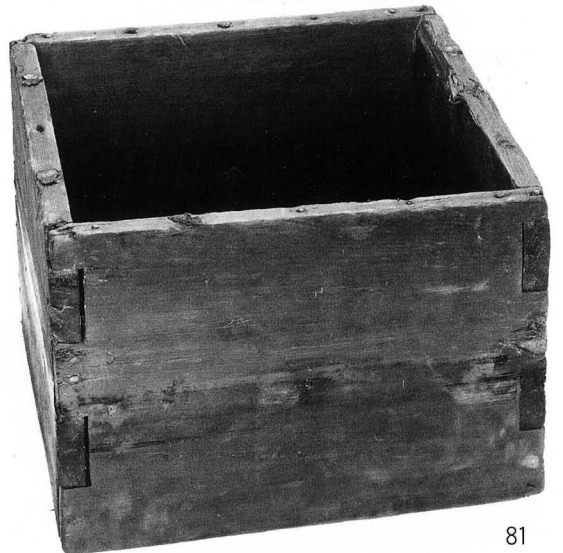
60



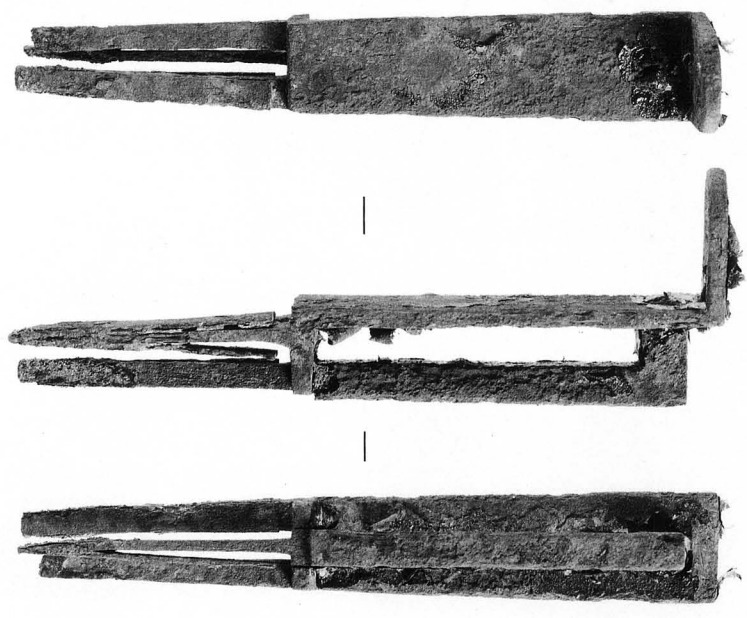
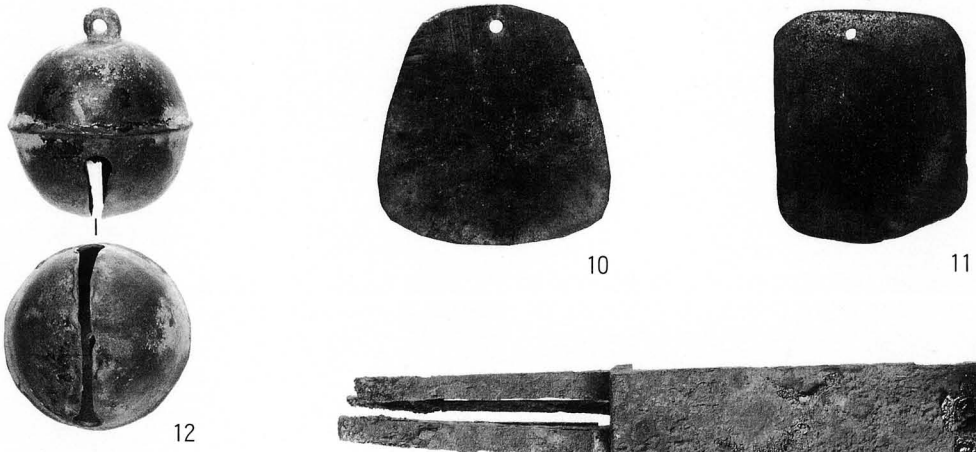
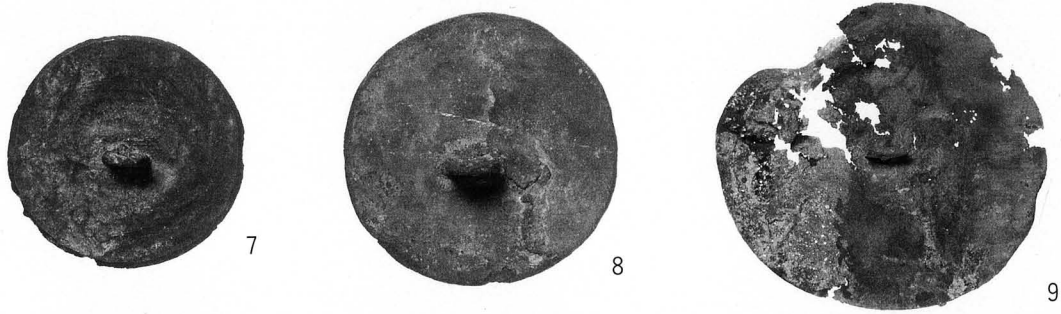
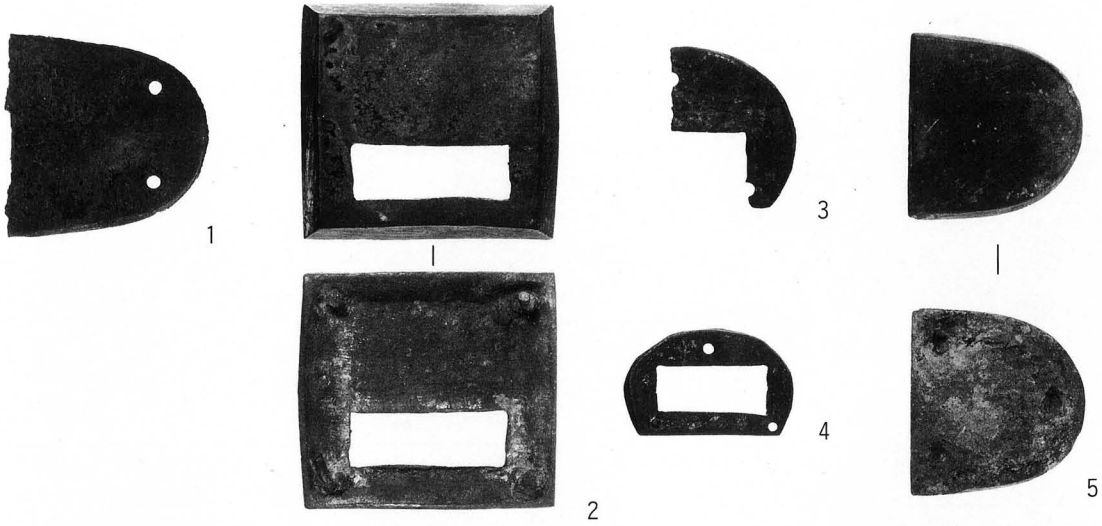
80

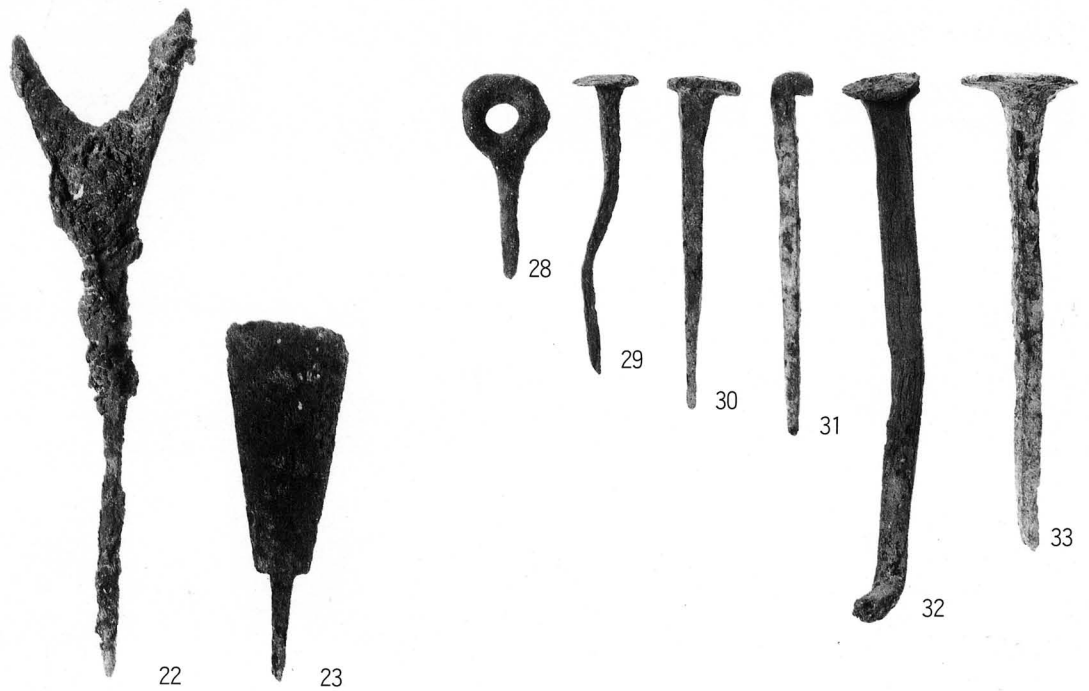


79



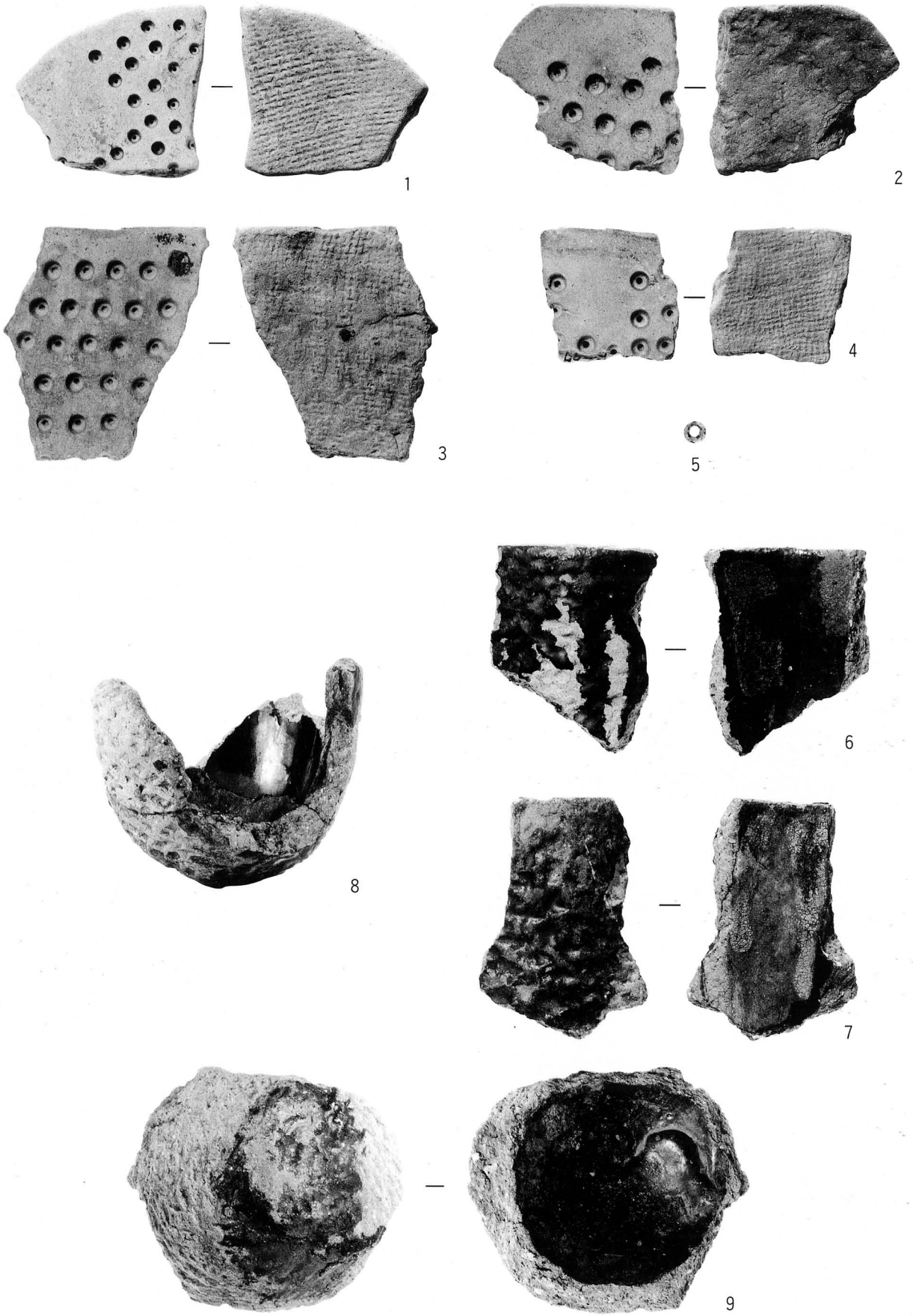
81







1 : 1 (19'・20' X線写真)



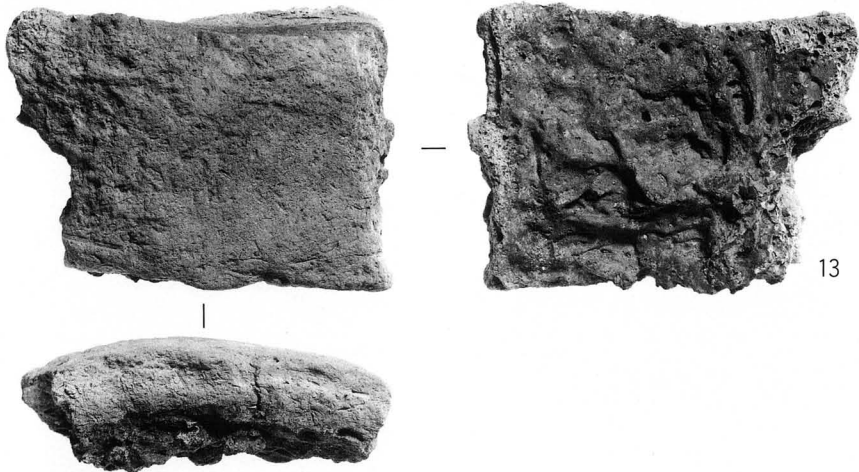
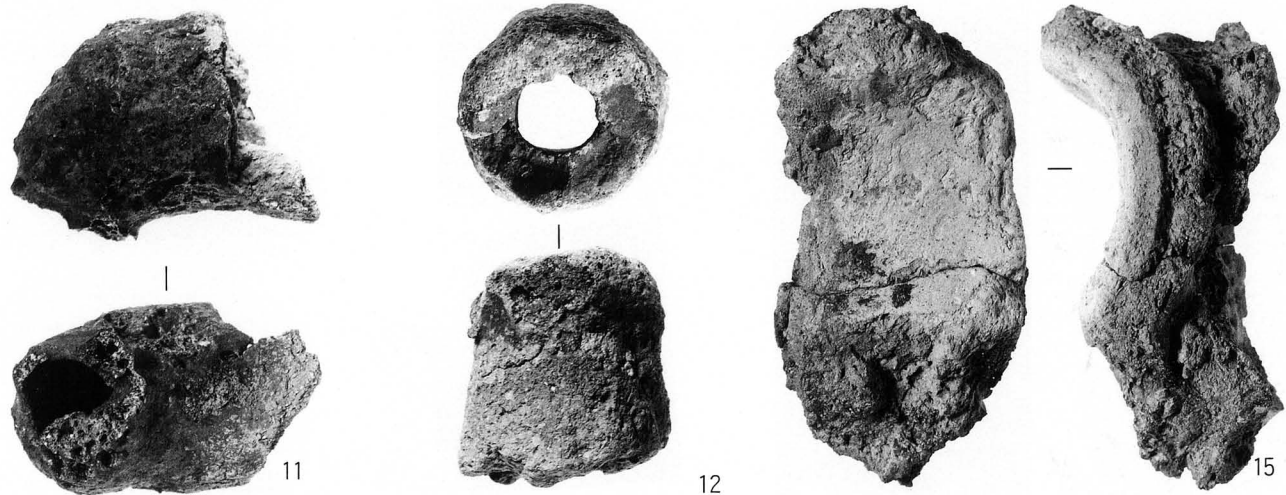
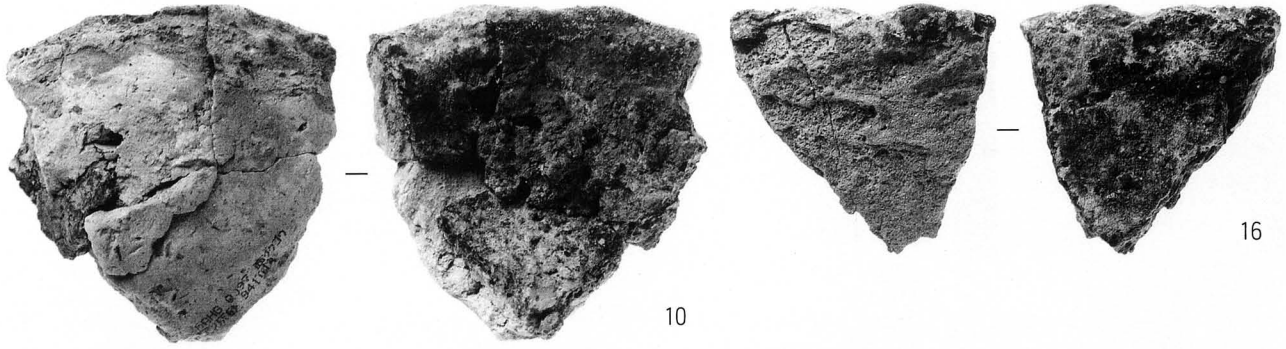
1~4ーガラス小玉鑄型

5ーガラス小玉

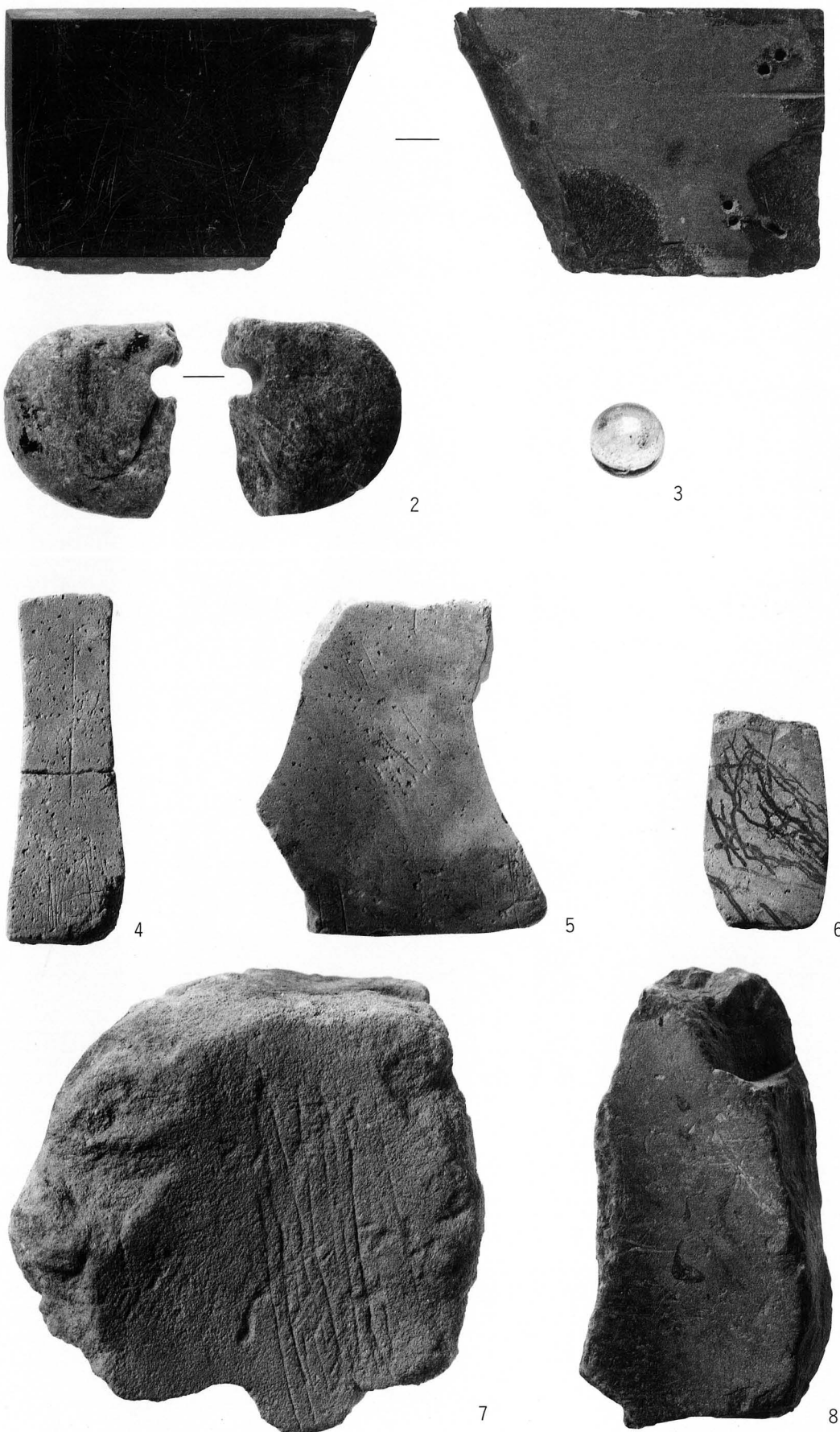
6~9ーガラス柑壺

1~4 4:5

6~9 7:10



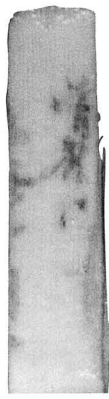
10・16一坩堝 11・12・14・15一鞆羽口 13一炉壁
 10~13・15・16一SD6400 14一遺跡包含層
 10~12・15・16 1:2 13・14 1:4



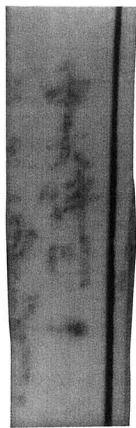
1—石鏟 2—穿孔石製品 3—水晶玉 4~8—砥石
 1・6 遺物包含層 2—SE6561 3—SX6428 4・7・8—SD6400 5—SK6507
 1~3 1:1 4~8 1:2



21



21'



21'



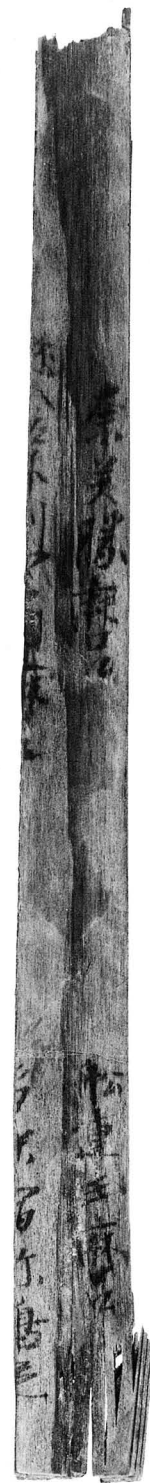
23



85



5



30



12



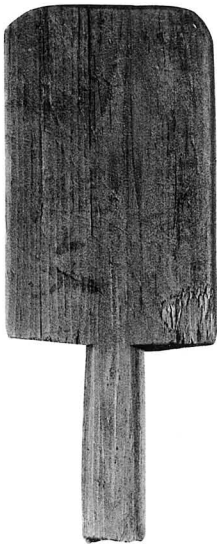
15



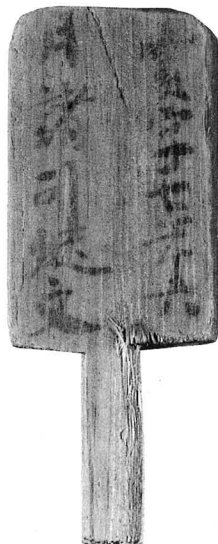
19



14



8



18



7



25



24



54



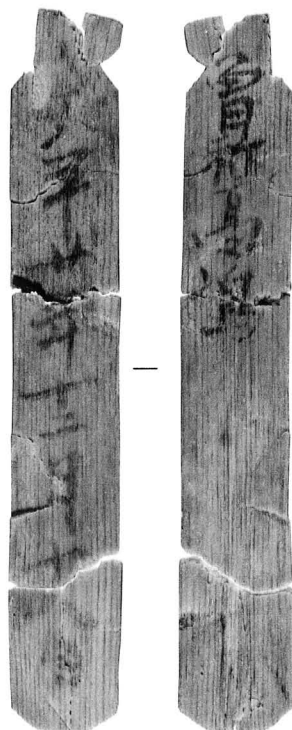
9



10



48



35



3



27



32



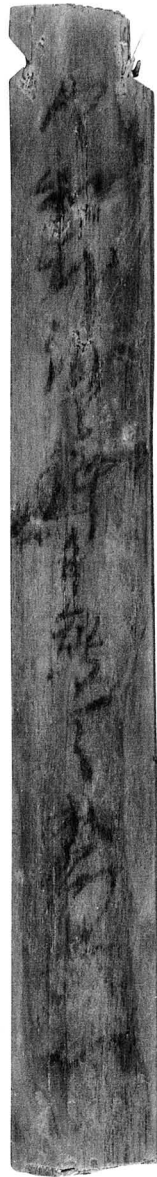
37



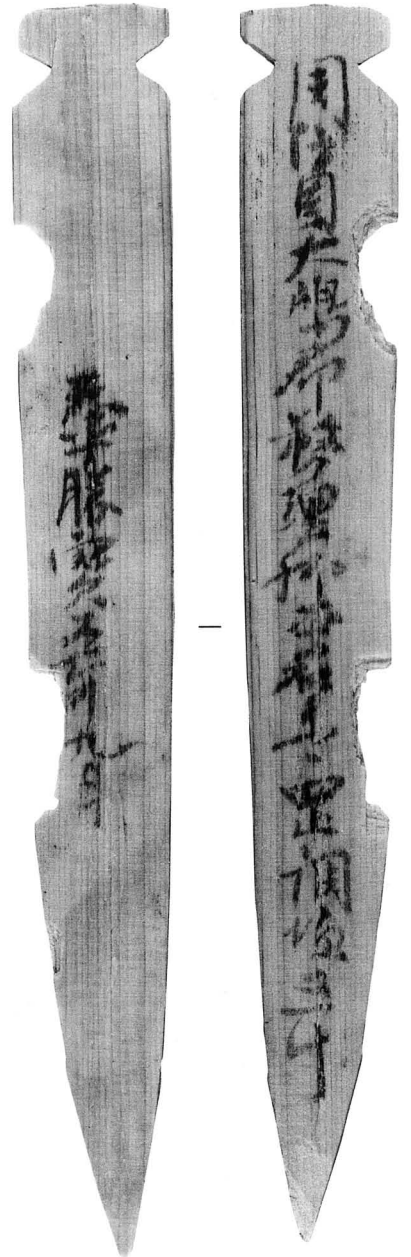
79



76



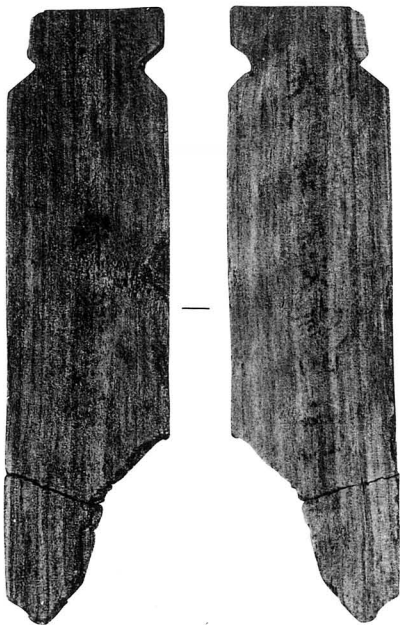
74



69



51



75



70



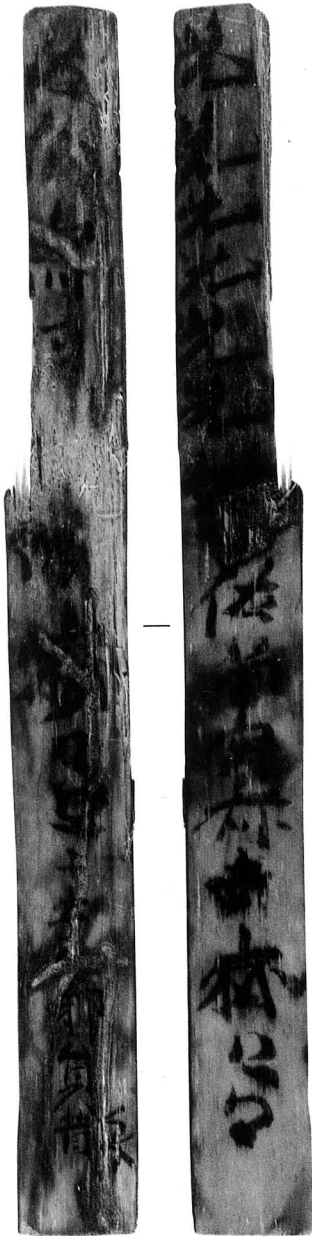
78



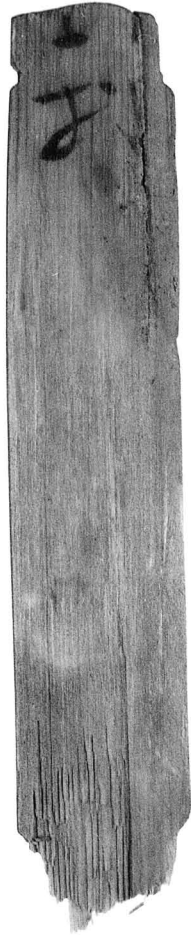
56



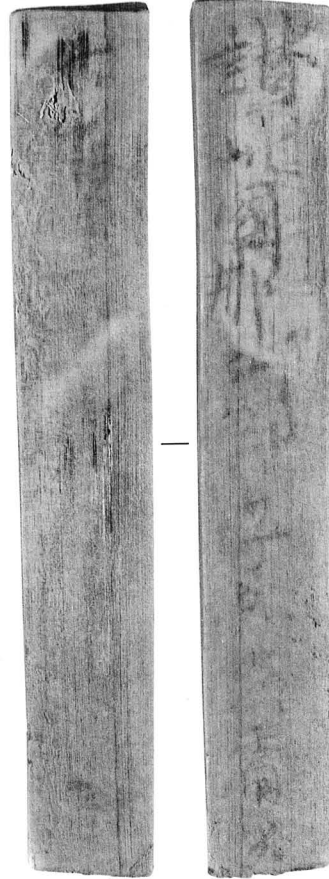
58



93



92



71



94



119



118



116



101



82



84



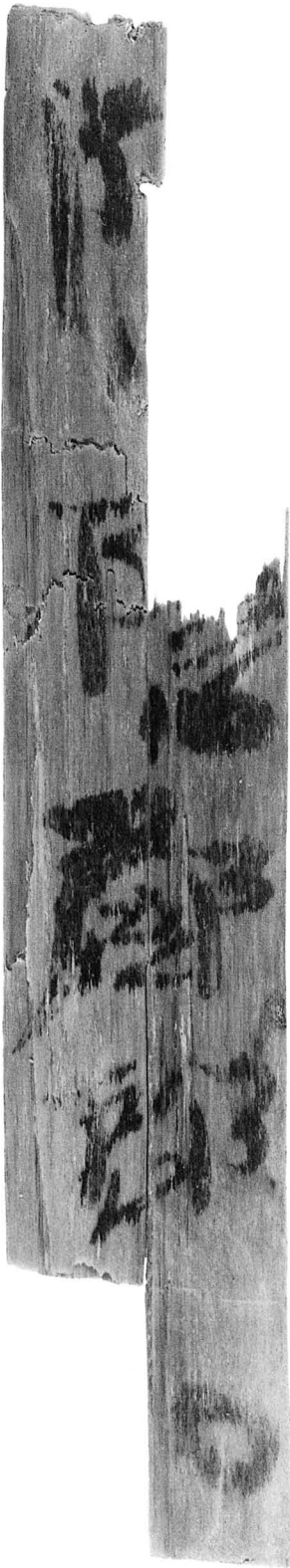
105



97



86



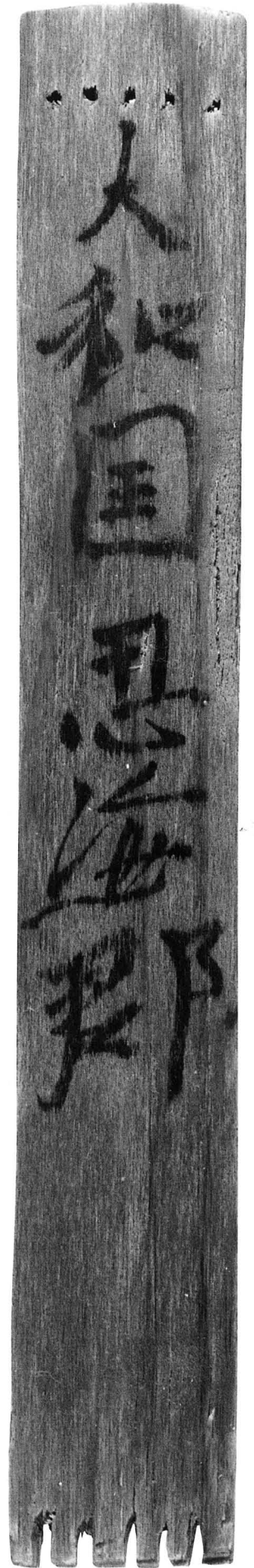
91



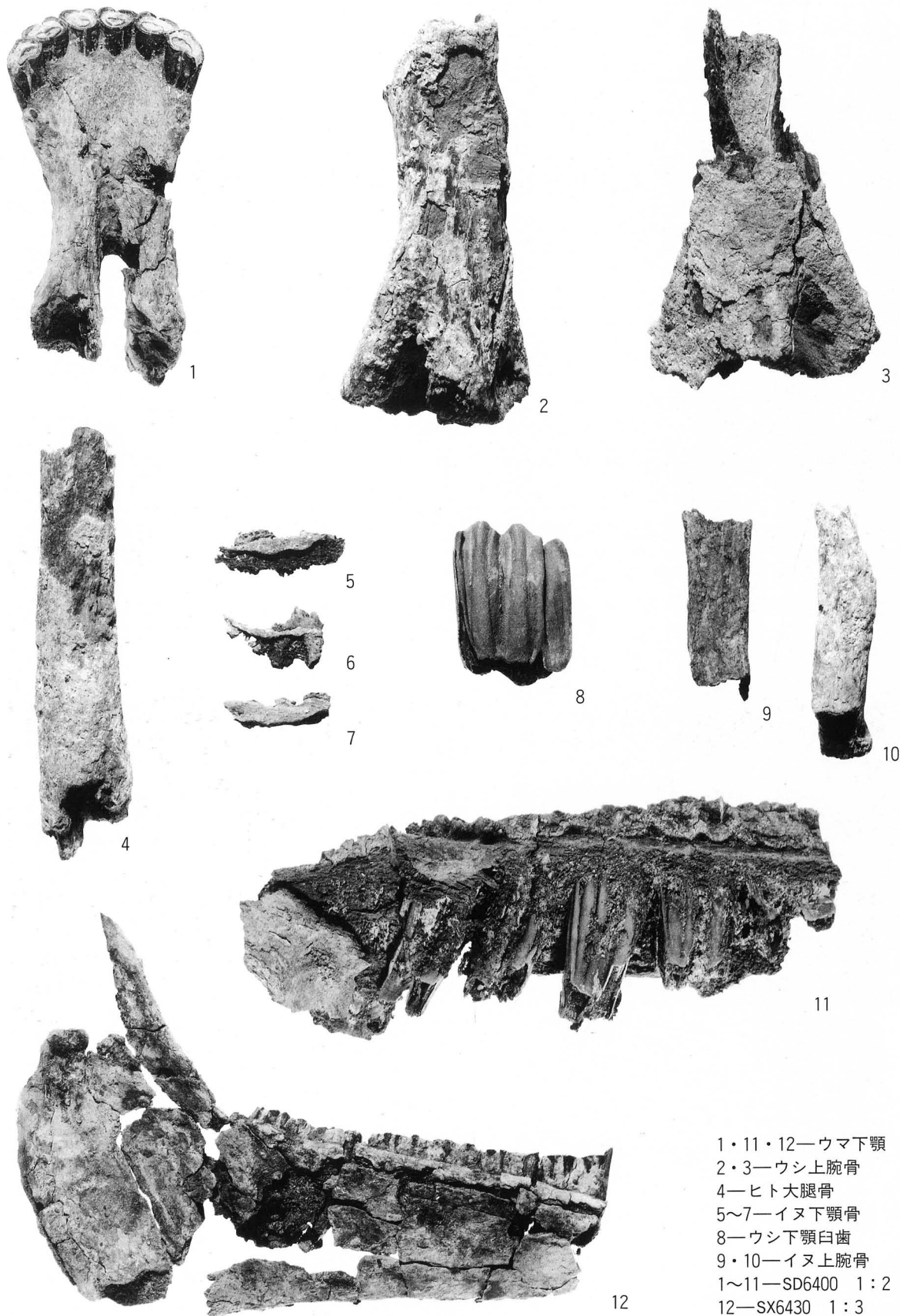
89



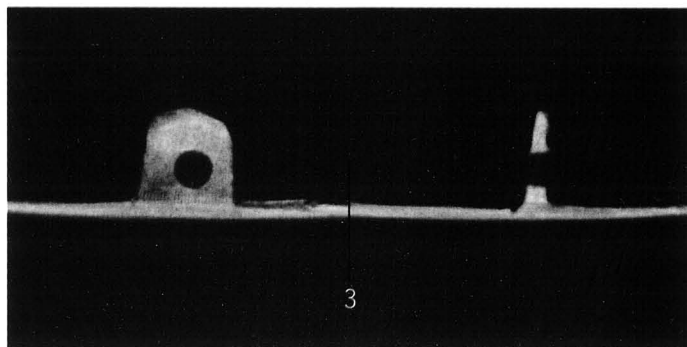
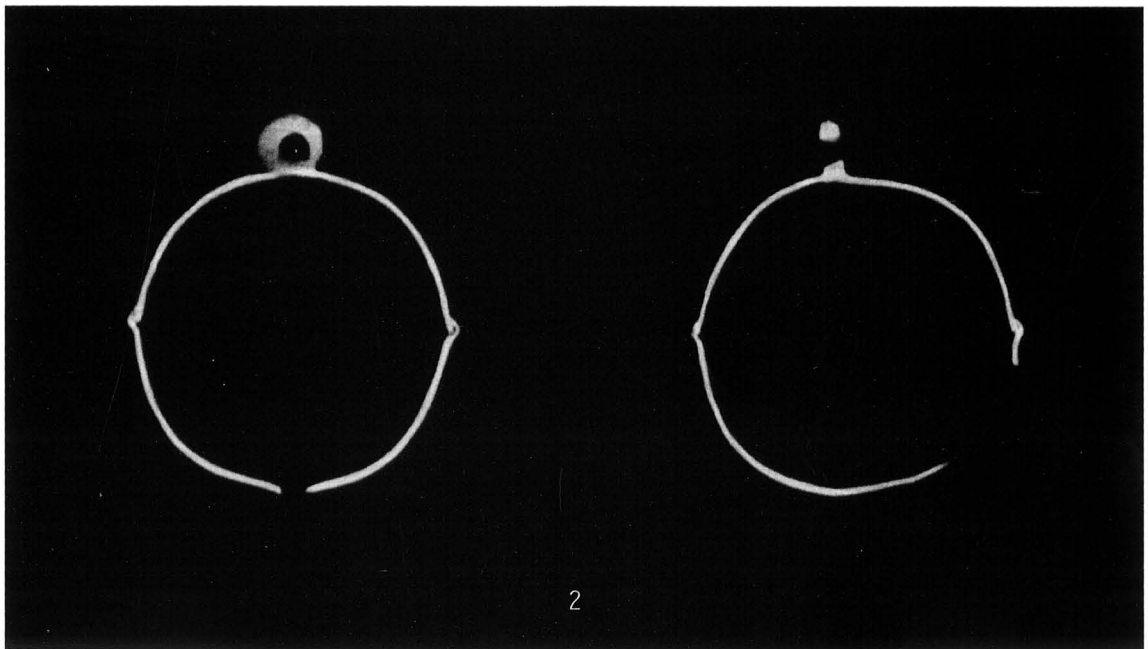
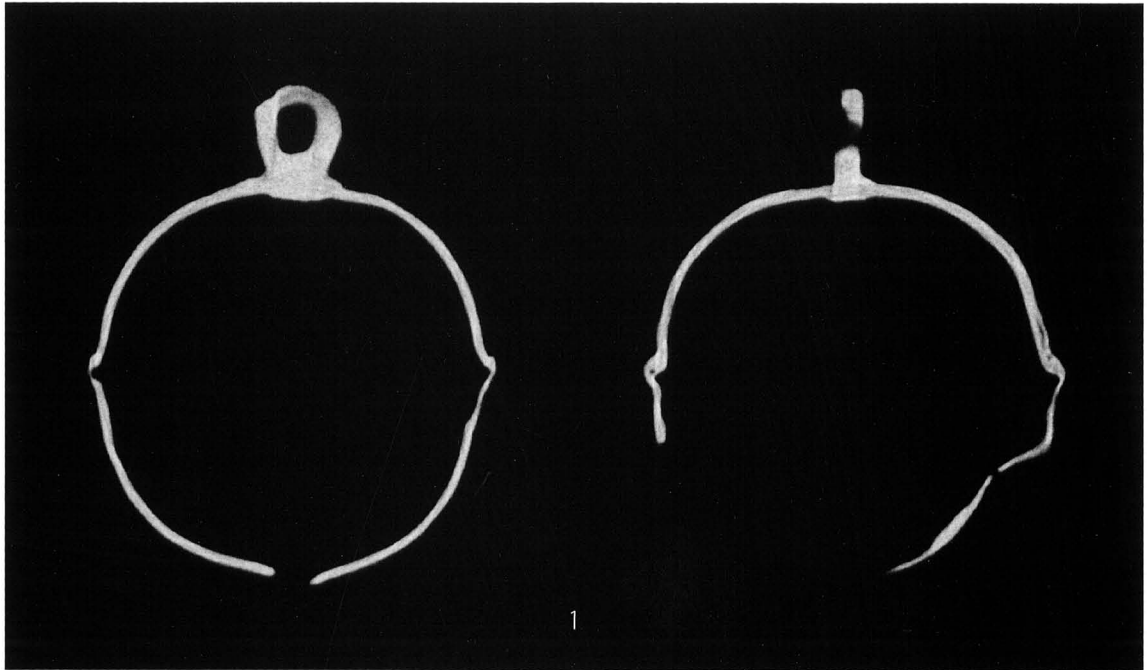
90



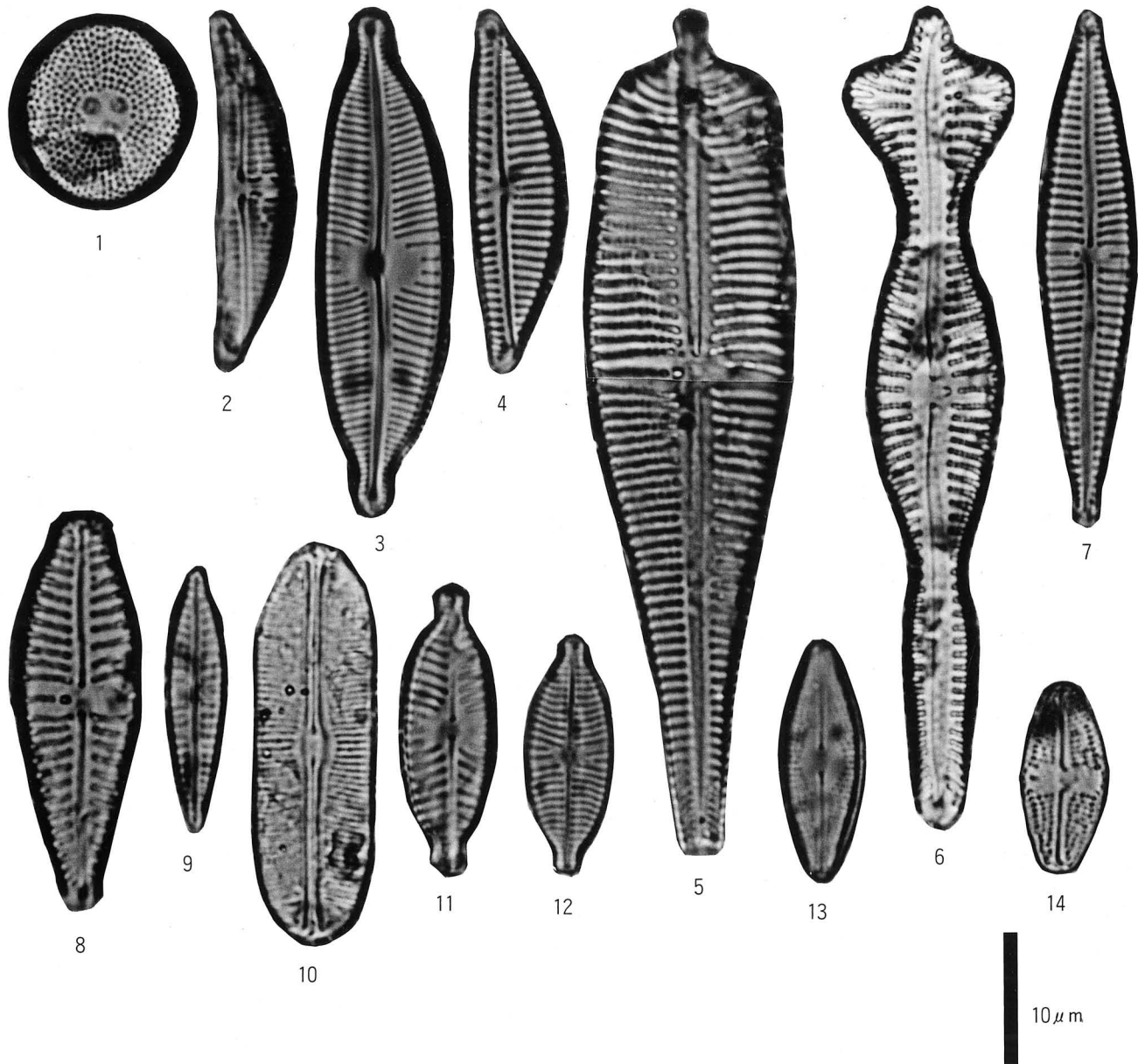
88



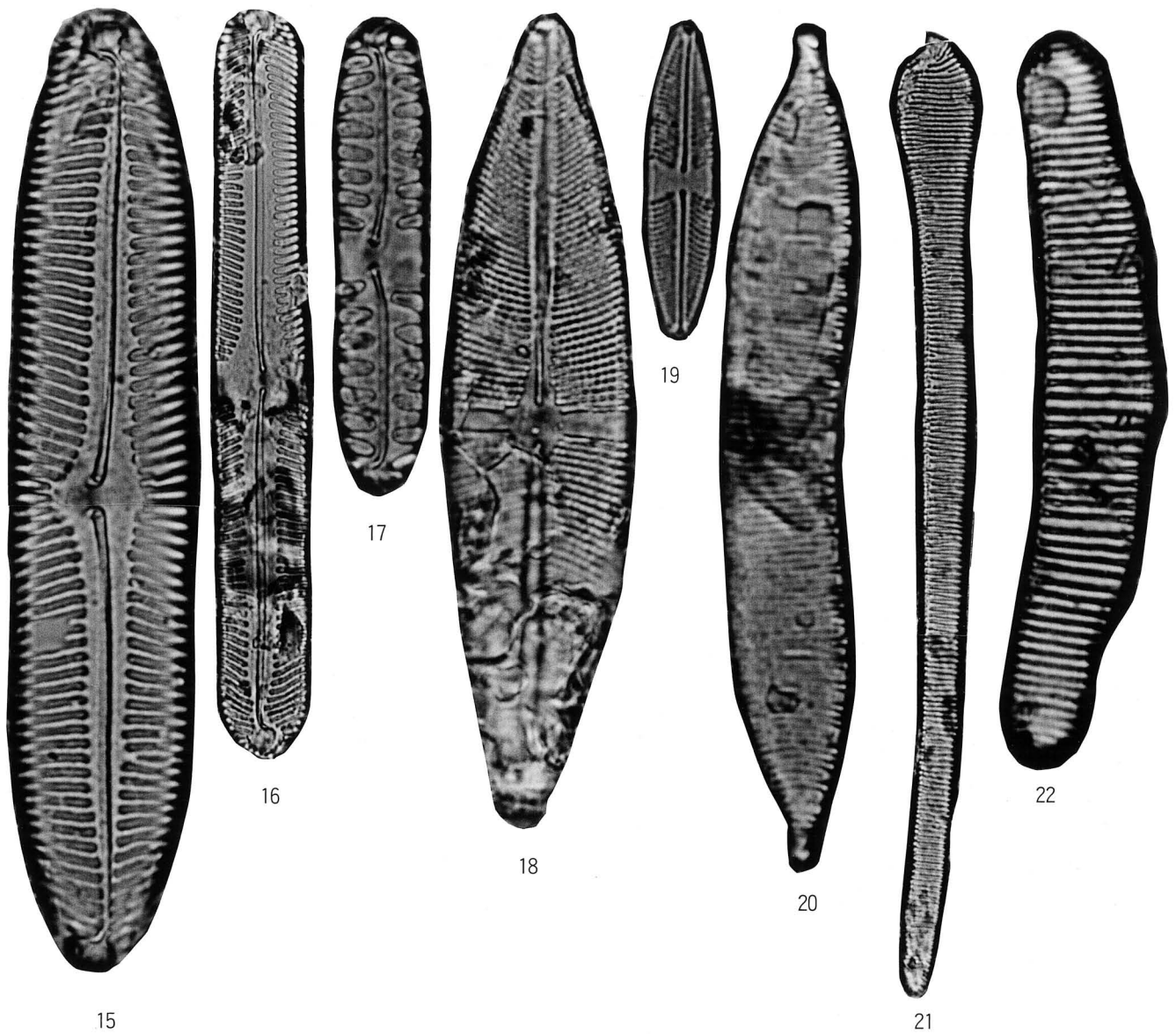
1・11・12—ウマ下顎
2・3—ウシ上腕骨
4—ヒト大腿骨
5～7—イヌ下顎骨
8—ウシ下顎臼歯
9・10—イヌ上腕骨
1～11—SD6400 1:2
12—SX6430 1:3



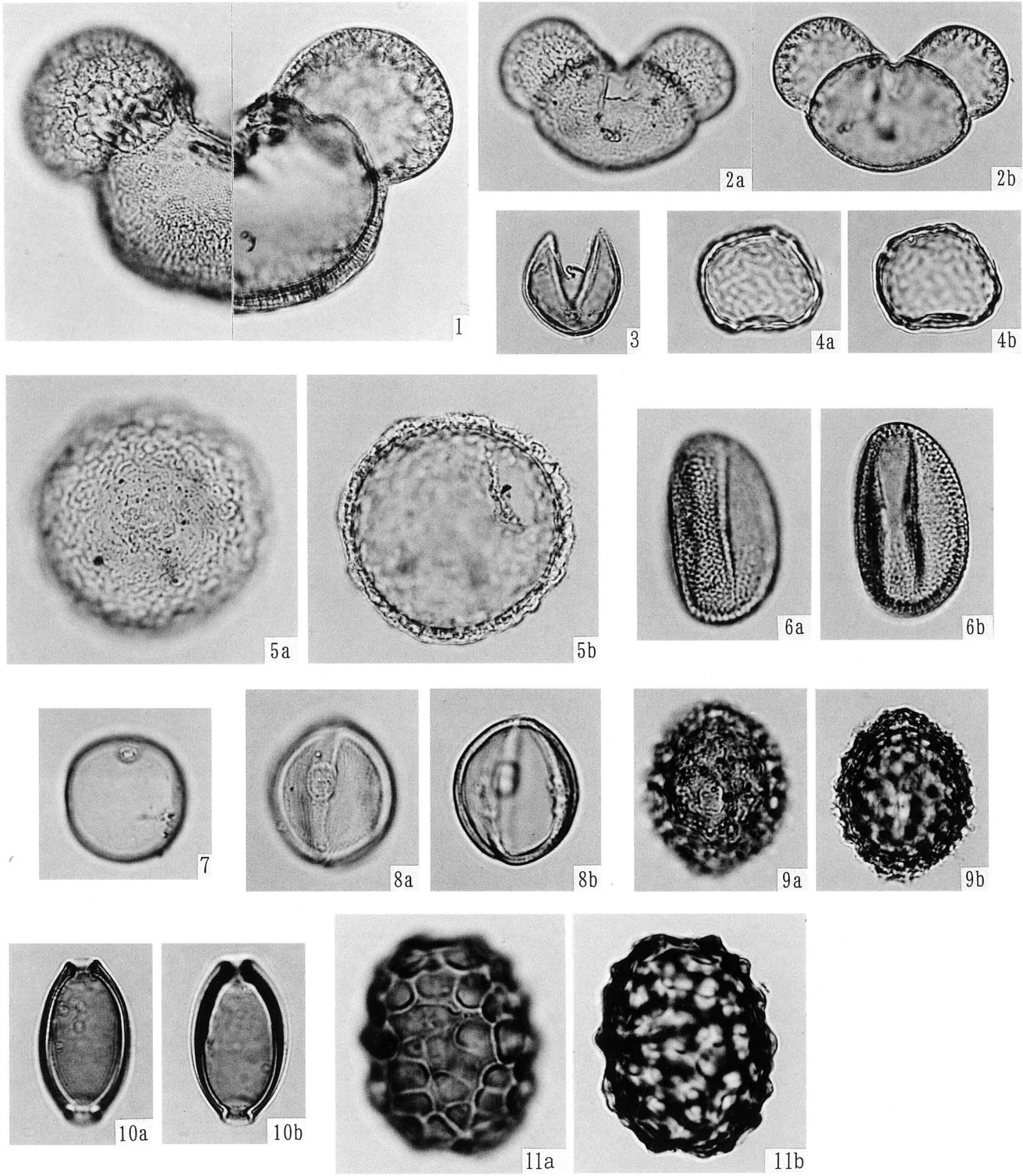
1—銅鈴(No.13) 2—銅鈴(No.12) 3—素文小鏡(No.8)



- 1—*Orthoseira roeseana* (Rabh.) O'Meara (Aライン; 試料番号7)
 2—*Amphora ovalis* var. *affinis* (Kuetz.) V.Heurck (Aライン; 試料番号5)
 3—*Cymbella naviculiformis* Auerswald (Aライン; 試料番号14)
 4—*Cymbella silesiaca* Bleisch (Aライン; 試料番号5)
 5—*Gomphonema augur* var. *gautieri* V.Heurck (Aライン; 試料番号5)
 6—*Gomphonema acuminatum* Ehrenberg (Aライン; 試料番号5)
 7—*Gomphonema gracile* Ehrenberg (Aライン; 試料番号7)
 8—*Gomphonema angustatum* (Kuetz.) Rabenhorst (Aライン; 試料番号6)
 9—*Gomphonema parvulum* Kuetzing (Aライン; 試料番号5)
 10—*Navicula bacillum* Ehrenberg (Aライン; 試料番号5)
 11—*Navicula elginensis* (Greg.) Ralfs (Aライン; 試料番号7)
 12—*Navicula decussis* Oestrup (Aライン; 試料番号14)
 13—*Navicula confervacea* (Kuetz.) Grunow (Aライン; 試料番号11)
 14—*Navicula mutica* Kuetzing (Aライン; 試料番号6)



- 15—*Pinnularia viridis* (Nitz.) Ehrenberg (Aライン；試料番号6)
 16—*Pinnularia gibba* Ehrenberg (Aライン；試料番号5)
 17—*Pinnularia borealis* Ehrenberg (Aライン；試料番号6)
 18—*Stauroneis phoenicenteron* var. *hattori* Tsumura (Aライン；試料番号5)
 19—*Stauroneis obtusa* Lagerst (Aライン；試料番号11)
 20—*Hantzschia amphioxys* (Ehr.) Grunow (Aライン；試料番号5)
 21—*Actinella brasiliensis* Grunow (Aライン；試料番号5)
 22—*Eunotia pectinalis* var. *undulata* (Ralfs) Rabenhorst (Aライン；試料番号5)



50 μm

50 μm

(1, 5)

(2-4, 6-11)

1—モミ属

2—マツ属

3—スギ属

4—ニレ属-ケヤキ属

5—ツガ属

6—ソバ属

7—イネ科

8—ゴキズル属

9—キク亜科

10—鞭虫卵

11—回虫卵